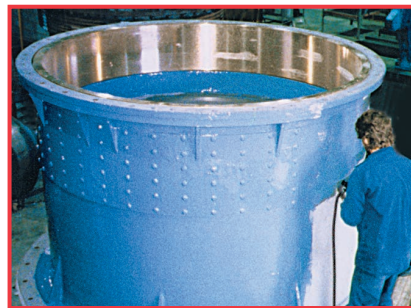
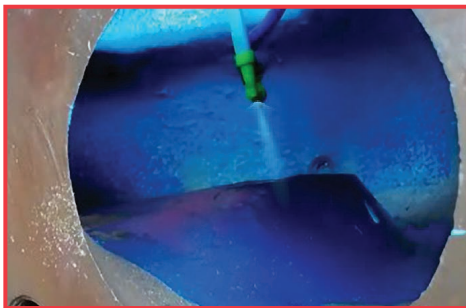


Devcon® EZ-Spray Ceramic



Achieve superior protection of brushable ceramic coatings... with the ease and simplicity of spray application!

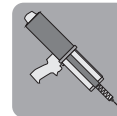


EZ-Spray cartridge system allows fast, easy spray application of chemical-resistant ceramic coating, eliminating premixing, open time concerns, and product waste. The high-build coating (18-22mils/coat) reduces the coats required and application time.

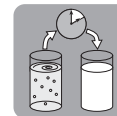
Protect pump casings, impeller blades, volutes, flotation cells, fan blades and scrubbers. Rebuild heat exchangers and other water circulating equipment.

Reduce Repair Time

- Low viscosity for easier application
- Fast curing minimizes downtime



Easy to Apply



Fast Curing

Environmentally Friendly

- Solvent free, zero VOCs



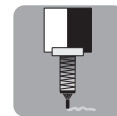
Safe for Environment



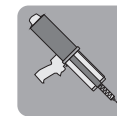
Solvent Free

Eliminate Product Waste

- Mix-as-dispensed system eliminates hand mixing
- Lets you use product as needed
- Special nozzles ensure uniform exact-ratio mixing and application



Mixed as Dispensed



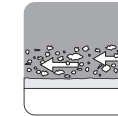
Easy to Apply



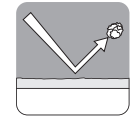
No Waste

Provide Long-Lasting Protection

- Produces low-friction surface
- Excellent corrosion, abrasion, and impact resistance
- High temperature resistance to 350° F



Abrasion Resistant



Impact Resistant



Temperature Resistant

Packaging: Item no. - Description

- 11780 – EZ-Spray Ceramic Red
- 11781 – EZ-Spray Ceramic Blue

- 14289 – Straight Mix Nozzle
- 14279 – 90 Degree Spray Nozzle
- 14404 – Pneumatic Spray Dispenser