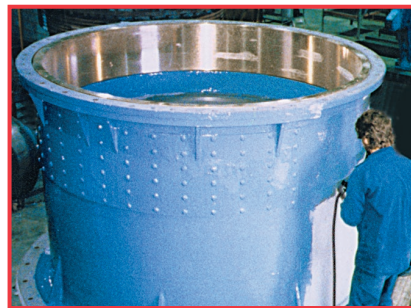
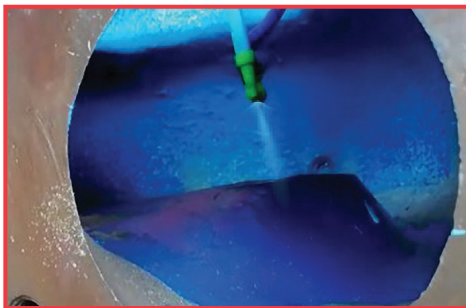


Devcon® EZ-Spray Ceramic



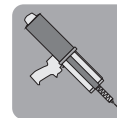
Achieve superior protection of brushable ceramic coatings...
with the ease and simplicity of spray application!



EZ-Spray cartridge system allows fast, easy spray application of chemical-resistant ceramic coating, eliminating premixing, open time concerns, and product waste. The high-build coating (18-22mils/coat) reduces the coats required and application time.

Reduce Repair Time

- Low viscosity for easier application
- Rapid curing minimizes downtime



Easy to Apply



Fast Curing

Environmentally Friendly

- Solvent free, zero VOCs
- No special handling requirements



Safe for Environment



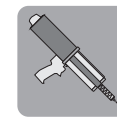
Solvent Free

Eliminate Product Waste

- Mix-as-dispensed system eliminates hand mixing
- Lets you use some product now and some later
- Special nozzles ensure uniform exact-ratio mixing and application



Mixed as Dispensed



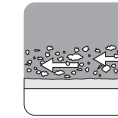
Easy to Apply



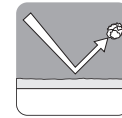
No Waste

Provide Long-Lasting Protection

- Produces smooth surface finish
- Excellent corrosion, abrasion, and impact resistance
- High temperature resistance to 350° F



Abrasion Resistant



Impact Resistant



Temperature Resistant