



Devcon® EZ-Spray Ceramic Coating Makes Fast Work of Restoring Steel Plant Tank

Problem

Steel plant utilizes a centrally located metal tank that stores the hydraulic mineral oil used throughout the steel production process. The tank was initially coated to protect the steel, but the coating had severely deteriorated to a point that the tank was corroding. To minimize operational disruption, the unplanned shutdown time for repair was limited to less than one week

Tank Operating and Process Conditions

- Continuous operating temperature: 113°F (45°C)
- Original application life: Expectancy 5 years
- Chemical exposure: Hydraulic Mineral Oil

Solution

The tank was cleaned and then sandblasted using metallized aggregate to expose the clean white metal. Once fully prepared, the tank was coated with two layers of Devcon® EZ-Spray Ceramic Blue.

Project Outcome

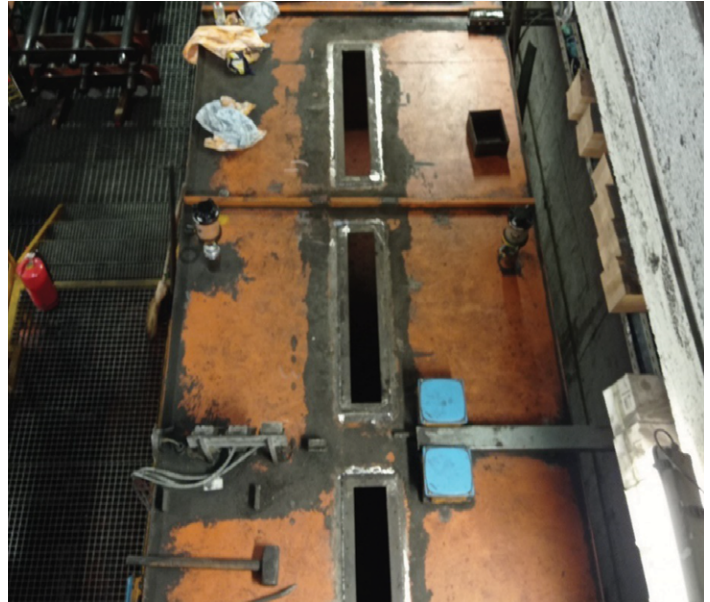
Devcon EZ-Spray Ceramic Blue coating helped restore the tank back to service within the timeline provided to the applicators.

Highly Durable Coating

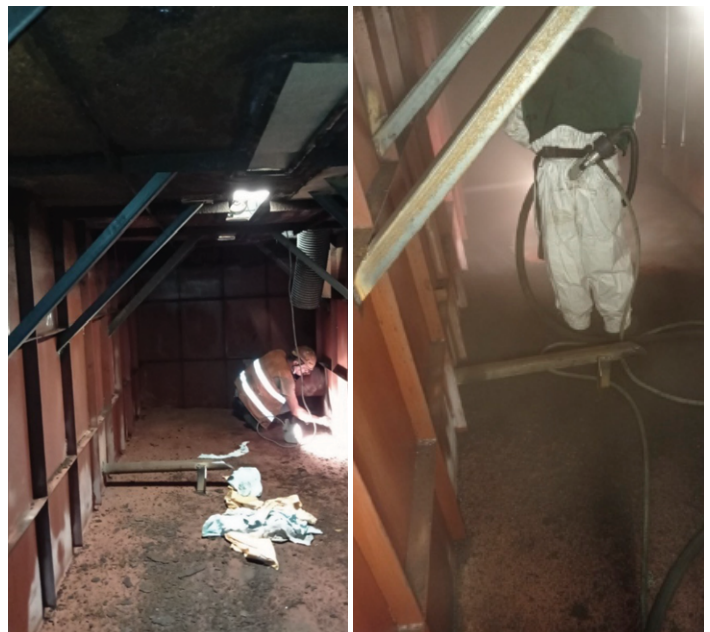
- Devcon EZ-Spray Ceramic coating provides excellent chemical resistance and helps protect the tank from corrosion.

Easy & Safe to Apply

- Being a confined and limited space application, the Devcon EZ-Spray Ceramic cartridges and easy to use pneumatic dispenser system made the application easy. As a result, the coating was quickly sprayed onto the interior surface of the tank.
- Being virtually 100% free of VOCs, minimal health and safety equipment was required, making the overhaul less restrictive and easier to perform.
- Being solvent-free, Devcon EZ-Spray Ceramic coating was safely applied without the concern of solvent buildup or hazardous vapors.



Original tank before sandblasting



Sandblasting the room before spraying

Cost-Effective Solution

- Applying a brushable coating would have taken 4 days to complete. The Devcon sprayable coating required only 2 days reducing application time by 50%.
- The ease of application allowed the project to be completed with fewer people to meet the required timeframe.

▶ **The Devcon EZ-Spray Ceramic Coating** is an excellent solution for repairing corrosive layers of confined or limited space applications. Utilizing the Devcon sprayable coating will significantly save repair time while providing a safer alternative to the applicator.



After coating with two layers of Devcon® EZ-Spray Ceramic Blue

