



# PRODUCT CATALOG

+1 855-489-7262

[itwpp.com](http://itwpp.com)



Quality, Innovation, Performance, Durability, Versatility, Sustainability





## TABLE OF CONTENTS

<b>Introduction</b>	<b>3</b>
Product Capabilities . . . . .	3
Services and Support . . . . .	3
<b>OEM Adhesives/Sealants</b>	<b>4-13</b>
Structural Adhesives . . . . .	4-9
Epoxy Adhesives . . . . .	10-11
Cyanoacrylates/Silicones/Urethanes . . . . .	12
Dispensing Equipment . . . . .	13
<b>DISPENSING EQUIPMENT</b>	<b>14-17</b>
Sprayable Syntactic Materials . . . . .	14-15
Specialty Products . . . . .	16
Product Selector Guide . . . . .	17
<b>Wearing Compounds/Epoxies/Urethanes</b>	<b>18-34</b>
Surface Preparation . . . . .	18
MRO Product Selector Guide . . . . .	19
Wearing Compounds . . . . .	20-23
Belting and Rubber Repair . . . . .	24-26
Corrosion Resistant Epoxies . . . . .	27-28
Metal Repair . . . . .	29-32
Floor Repair and Surfacing . . . . .	33-34
<b>Assembly &amp; Repair</b>	<b>35-40</b>
Threadlockers/Thread Sealants . . . . .	35-36
Gasketing/Retaining Compounds . . . . .	37-38
Silicone Sealants/Anti-Seize Lubricants/Hand Cleaners . . . . .	39-40
<b>Agency Approvals and References</b>	<b>41-42</b>
<b>Product Index</b>	<b>43</b>
<b>Global Operations</b>	<b>44</b>

## INTRODUCTION

### PRODUCT CAPABILITIES

ITW Performance Polymers offers a wide range of products to the mining, coal-fired power, alternative energy (wind), transportation, marine, composites, engineered construction and general industrial markets. Our products are designed to reduce customers' costs by eliminating steps in their manufacturing processes, reducing the number of parts in an assembly or improving the quality of customers' assembled finished goods. The development of such products is accomplished by working through the voice of our customers.

#### Mining, Coal-Fired Power, Aggregate and Industrial

- Reduce maintenance/repair/energy costs
- Extend maintenance intervals
- Excellent sliding abrasion resistance
- Prolong equipment of scrubbers, pipe elbows, cyclones, chutes, bins and hoppers
- Protect fan blades, float cells, screw conveyors and augers



#### Alternative Energy, Transportation, Marine, Composites, Engineered Construction and General Industrial

- High impact resistance, flexibility, and durability
- Ease of use
- Reduced cycle times
- Patented MMA technology and service
- Sprayable coring materials and barrier coats
- Sprayable filler/primers for use on many substrates
- Polyester adhesive putties for filling and bonding
- Sprayable mold and plug building materials
- Brushable and sprayable radius materials



### SERVICES AND SUPPORT

The answer is in our advanced adhesive and sealant technologies. The ITW Performance Polymer team understands how demanding today's production environments can be; that's why we take pride in providing you with options and innovative solutions, regardless of the industry. We will use our experience and support teams to help you make the right choices for you and your business.

- Test programs and support to aid in the understanding of how our products will behave on your substrates.
- Technical and sales support with guidance in product selection, application & dispense methods and equipment support.
- Access to the global distribution network via ITW and our strategic partners. Our customers have the ability to obtain quality ITW Performance Polymers branded products and services around the world. The ITW Performance Polymers team understands the challenges presented by the modern production environment and are always available to demonstrate the wide range of bonding products for your applications.

STRUCTURAL ADHESIVES (1:1)

Product	Description	Working Time min.	Fixture Time min.	Tensile Strength, psi (MPa)	Tensile Elongation %	Max. Gap Fill in. (mm)	Part A Viscosity, cP * 103	Part B Viscosity, cP * 103
MA300	All Purpose, High Strength	3 - 6	10 - 13	3,510 - 4,290 (24.2 - 29.6)	20 - 40	0.125 (3.2)	40 - 70	40 - 70
MA310	All Purpose, High Strength	15 - 18	38 - 40	4,410 - 5,390 (30.4 - 37.2)	20 - 40	0.125 (3.2)	40 - 70	40 - 70
MA530	Highly Thixotropic, High Toughness	30 - 40	75 - 65	2,500 - 3,500 (17.2 - 24.1)	90-160	0.70 (18)	130 - 180	160 - 215
MA560-1	Highly Thixotropic, High Toughness	55-70	120 - 130	2,500 - 3,100 (17.2 - 21.3)	>130	1.00 (25)	145 - 185	170 - 205
MA590	Highly Thixotropic, High Toughness	90 - 105	135 -140	1,880 - 2,750 (13.0 - 19.0)	>130	1.5 (38.1)	140 - 230	165 - 230
MA8105 GB	Low Odor, High Toughness, Primer-less to Metal	3 - 6	12 - 14	3,285 - 4,015 (22.7 - 27.2)	5 - 10	0.5 (12.7)	70 - 140	50 - 120
MA8110 GB	Low Odor, High Toughness, Primer-less to Metal	8 - 12	33 - 36	3,285 - 4,015 (22.4 - 27.2)	25 - 45	0.5 (12.7)	40 - 90	40 - 70
MA8120 GB	Low Odor, High Toughness, Primer-less to Metal	18 - 22	50 - 60	2,907 - 3,630 (20.5 - 25.0)	30 - 60	0.5 (12.7)	40 - 80	80 - 120
H4110	Primerless to Metal, Elastic, Low Shrink, Non-Flammable	8 - 12	65 - 75	800 - 1,000 (6.5)	150	NA	40 - 80	40 - 80

Plexus® MA300

A two-part methacrylate adhesive designed for structural bonding of thermoplastic, metal, and composite assemblies. This product offers a combination of high strength and stiffness as well as the ability to bond a wide range of materials.

Mix Ratio by Vol.	Item #	Size	Items/Case	Color
1:1	14300	25 ml Twin Cartridge*	12	Mixed Color/Straw
1:1	IT410	50 ml Twin Cartridge*	12	Black
1:1	30500	50 ml Twin Cartridge*	12	Mixed Color/Straw
1:1	IT412	400 ml Twin Cartridge	12	Black
1:1	30000	400 ml Twin Cartridge	12	Mixed Color/Straw
1:1	IT405	5 gal Pail Adhesive	1	Mixed Color/Straw
1:1	IT406	5 gal Pail Activator	1	Mixed Color/Straw
1:1	IT407	50 gal Drum Adhesive	1	Mixed Color/Straw
1:1	IT408	50 gal Drum Activator	1	Mixed Color/Straw

Plexus® MA310

A two-part methacrylate adhesive designed as a medium-curing adhesive system offering a combination of high strength and stiffness as well as the ability to bond a wide range of materials.

Mix Ratio by Vol.	Item #	Size	Items/Case	Color
1:1	31500	50 ml Twin Cartridge*	12	Mixed Color/Straw
1:1	31000	400 ml Twin Cartridge	12	Mixed Color/Straw
1:1	IT435	5 gal Pail Adhesive	1	Mixed Color/Straw
1:1	IT406	5 gal Pail Activator	1	Mixed Color/Straw
1:1	IT408	50 gal Drum Activator	1	Mixed Color/Straw
1:1	IT437	50 gal Drum Adhesive	1	Mixed Color/Straw

Plexus® MA530

A two-part methacrylate adhesive designed for use on large structures where a moderate open time product is needed. Plexus MA530 may be used for composite and metal bonding for small to large structures. In addition, this product provides a unique combination of excellent fatigue endurance, outstanding impact resistance, and superior toughness. Plexus MA530 is gray when mixed.

Mix Ratio by Vol.	Item #	Size	Items/Case	Color
1:1	53000	400 ml Twin Cartridge	12	Gray
1:1	56500	400 ml Twin Cartridge	12	White
1:1	IT203	5 gal Pail Adhesive	1	White
1:1	IT205	5 gal Pail Activator	1	Black
1:1	IT200	50 gal Drum Adhesive	1	White
1:1	IT206	50 gal Drum Activator	1	Black

Plexus® MA560-1

A two-part methacrylate adhesive designed for use on large structures where a long open time product is needed. Plexus MA560-1 is commonly used for bonding stringers and liners into large fiberglass boats with bond lines up to 1" thick. In addition, this product provides a unique combination of excellent fatigue endurance, outstanding impact resistance, and superior toughness. Plexus MA560-1 is gray when mixed.

Mix Ratio by Vol.	Item #	Size	Items/Case	Color
1:1	56000	400 ml Twin Cartridge	12	Gray
1:1	56500	400 ml Twin Cartridge	12	White
1:1	IT213	5 gal Pail Adhesive	1	White
1:1	IT219	5 gal Pail Activator	1	Black
1:1	IT210	50 gal Drum Adhesive	1	White
1:1	IT211	50 gal Drum Activator	1	Black

		Metals					Coatings		Plastics					Composites			Other	
		Aluminum	Cold Rolled Steel	Galvanized / Zinc Coated	Galvanneal	Stainless Steel	Powder coat	E-Coat	ABS and ASA	Acrylics	Polyamides (Nylons)	Polycarbonate	Rigid PVC	Gelcoats	Fiberglass	RTM	SMC	Rubbers
●*	●*				●*	●	●	●	●		●	●	●	●	●	●	●	●
●*	●*				●*	●	●	●	●	●	●	●	●	●	●	●	●	●
●*	●*				●*	●	●	●	●	●	●	●	●	●	●	●	●	●
●*	●*				●*	●	●	●	●		●	●	●	●	●	●	●	●
●*	●*				●*	●	●	●	●		●	●	●	●	●	●	●	●
●	●	●	●	●	●	●	●	●	●	●	●	●	●	●	●	●	●	●
●	●	●	●	●	●	●	●	●	●	●	●	●	●	●	●	●	●	●
●	●	●	●	●	●	●	●	●	●	●	●	●	●	●	●	●	●	●

● Preferred ● Good \* Use PC120 cleaner/conditioner Blank: Not Recommended, or call ITWPP.

Plexus® MA590

A two-part methacrylate adhesive designed for use on large marine structures where a very long open time product is needed. Plexus MA590 is commonly used for bonding stringers and liners into large fiberglass boats with bond lines up to 1" thick. In addition, this product provides a unique combination of excellent fatigue endurance, outstanding impact resistance, and superior toughness. Plexus MA590 is gray when mixed.

Mix Ratio by Vol.	Item #	Size	Items/Case	Color
1:1	59000	400 ml Twin Cartridge	12	Gray
1:1	IT177	5 gal Pail Adhesive	1	White
1:1	IT178	5 gal Pail Activator	1	Black
1:1	IT170	50 gal Drum Adhesive	1	White
1:1	IT175	50 gal Drum Activator	1	Black

Plexus® MA8000 Series Adhesives

Plexus MA8000 series adhesives are advanced direct-to-metal, low halogen two-part methacrylate structural adhesives. They are designed for the structural bonding of various metals, coatings, plastics, and composite assemblies. They do a superb job of bonding metals without primers to other metals, engineered thermoplastics, and composite assemblies with little to no surface preparation. Combined at a 1:1 ratio by volume, MA8000 series s adhesives can bond hot-dip and electrogalvanized zinc steel and other metals to dissimilar substrates. They provide an exceptional combination of high strength, toughness, environmental resistance, and fatigue endurance, for industrial and transportation assembly.

Plexus® MA8105 GB

Mix Ratio by Vol.	Item #	Size	Items/Case	Color
1:1	81057	50 ml Twin Cartridge	12	Gray
1:1	81058	400 ml Twin Cartridge	12	Gray

Plexus® MA8110 GB

Mix Ratio by Vol.	Item #	Size	Items/Case	Color
1:1	81111	50 ml Twin Cartridge	12	Gray GB
1:1	81101	5 gal Pail Adhesive	1	Gray
1:1	81103	5 gal Pail Activator	1	Gray
1:1	81102	50 gal Drum Adhesive	1	Gray
1:1	81104	50 gal Drum Activator	1	Gray
1:1	81108	400 ml Twin Cartridge	12	Gray GB

Plexus® MA8120 GB

Mix Ratio by Vol.	Item #	Size	Items/Case	Color
1:1	81211	50 ml Twin Cartridge	12	Gray GB
1:1	81101	5 gal Pail Adhesive	1	Gray
1:1	81203	5 gal Pail Activator	1	Gray
1:1	81102	50 gal Drum Adhesive	1	Gray
1:1	81204	50 gal Drum Activator	1	Gray
1:1	81208	400 ml Twin Cartridge	12	Gray GB

Plexus® H4110

Elastic semi structural two-part hybrid adhesive that forms elastic connections with a variety of substrates. It is designed for bonding composites, (FRP, epoxy, etc.) thermoplastics, metals, wood, concrete, and cement. with low exotherm and low odor.

Mix Ratio by Vol.	Item #	Size	Items/Case	Color
1:1	41100	400 ml Twin Cartridge	10	Gray
1:1	41101	5 gal Pail Adhesive	1	Gray
1:1	41103	5 gal Pail Activator	1	Gray
1:1	41102	48.9 gal Drum Adhesive	1	Gray
1:1	41104	48.9 gal Drum Activator	1	Gray

OEM ADHESIVES/SEALANTS

OEM ADHESIVES/SEALANTS

STRUCTURAL ADHESIVES (10:1)

Product	Description	Working Time min.	Handling Time min.	Tensile Strength, psi (MPa)	Tensile Elongation %	Max. Gap Fill	Part A Viscosity, cP * 103	Part B Viscosity, cP * 103
MA205HV	Primerless to Aluminum Ultrafast Fixture Times	3 - 5	7 - 8	1,980 - 2,420 (13.8 - 17.2)	15 - 30	0.25 (6.35)	100 - 130	15 - 50
MA320	Low Modulus, High Elongation, High Toughness	8 - 12	27 - 30	1,800 - 2,200 (11.7 - 15.2)	30 - 60	0.375 (9.525)	135 - 175	30 - 70
MA420	All Purpose, High Strength, High Toughness	4 - 6	15 - 17	2,430 - 2,970 (18.6 - 20.7)	20 - 40	0.375 (9.525)	100 - 125	35 - 80
MA420FS	Ultrafast for Robotic Applications	1 - 2	3 - 4	1,260 - 1,520 (8.6 - 10.3)	5 - 15	0.125 (3.175)	100 - 125	35 - 80
MA420W	Rapid Curing, High Strength, High Toughness	3 - 4	8 - 12	2,610 - 3,190 (18.0 - 22.0)	20 - 40	0.375 (9.5)	80 - 100	50 - 80
MA422	All Purpose, High Toughness	17 - 20	35 - 40	1,260 - 1,520 (18.6 - 20.7)	40 - 70	0.125 (9.525)	100 - 130	35 - 70
MA425	All Purpose, High Toughness	28 - 30	80 - 85	2,565 - 3,315 (13.8 - 17.9)	30 - 50	0.375 (9.525)	100 - 125	35 - 70
MA550	UV Stable White	39 - 42	70 - 75	2,175 - 2,374 (14.9 - 16.4)	20 - 40	0.375 (10)	130 - 160	30 - 70
MA830	Primerless to Aluminum, High Strength	4 - 6	15 - 17	2,610 - 3,190 (18.0 - 22.0)	10 - 20	0.50 (12.7)	80 - 120	35 - 80
MA832	Primerless to Aluminum, High Strength	12 - 14	55 - 60	2,790 - 3,410 (19.2 - 23.5)	20 - 40	0.50 (12.7)	80 - 130	35 - 80
MA920	Low Odor, High Toughness	4 - 6	16 - 17	2,385 - 2,915 (16.4 - 20.1)	30 - 50	0.375 (9.5)	80 - 120	35 - 80
MA1020	Low Odor, Low Shrink	5 - 6	8 - 10	1,305 - 1,595 (9.0 - 11.0)	10 - 20	0.375 (9.5)	100 - 130	35 - 80
MA1025	Low Odor, Low Shrink	20 - 25	40 - 45	1,305 - 1,595 (9.7 - 12.4)	90 - 110	1.00 (25.4)	180 - 220	35 - 70
MA2015 WHITE	UV Stable White, Highly Thixotropic	15 - 18	40 - 50	2,875 - 3,603 (19.8 - 24.8)	21 - 54	1.5 (38.1)	180 - 220	35 - 70
MA2030 WHITE	UV Stable White, Highly Thixotropic	32 - 35	70 - 90	3,098 - 3,350 (21.4 - 23.2)	36 - 77	1.5 (38.1)	180 - 220	35 - 70
MA2045 WHITE	UV Stable White, Highly Thixotropic	45 - 50	90 - 120	2,200 - 2,900 (22.0 - 23.0)	36 - 77	1.5 (38.1)	180 - 220	35 - 70
MA2230	Low Shrink, Highly Thixotropic, High Toughness	40 - 42	75 - 77	2,160 - 2,640 (14.9 - 18.2)	40 - 80	1.5 (38.1)	180 - 220	35 - 70
MA2245	Low Shrink, Highly Thixotropic, High Toughness	40 - 50	80 - 85	2,160 - 2,640 (14.9 - 18.2)	40 - 80	1.5 (38.1)	180 - 220	35 - 70
MA2290	Low Shrink, Highly Thixotropic, High Toughness	100 - 110	160 - 165	2,340 - 2,860 (16.1 - 19.7)	40 - 80	1.5 (38.1)	180 - 220	35 - 80

GREENGUARD Children & Schools Certified.

Plexus® MA205HV

An advanced non-conductive two-part methacrylate adhesive designed for the structural bonding of various electronic assemblies. In addition, MA205HV does a superb job of bonding metals without primers and engineered thermoplastics and composite assemblies with little to no surface preparation. This product provides a unique combination of high-strength, excellent fatigue endurance, outstanding impact resistance, and superior toughness.

Mix Ratio by Vol.	Item #	Size	Items/Case	Color
10:1	IT025X	490 ml Cartridge	12	Blue

Plexus® MA320

A two-part methacrylate adhesive designed for composite bonding applications in the transportation, marine, and engineering construction industries because it requires virtually no surface preparation. MA320 provides superior toughness at temperatures below 1.4°F (-17°C).

Mix Ratio by Vol.	Item #	Size	Items/Case	Color
10:1	32000BX	490 ml Cartridge	12	Black
10:1	32000X	490 ml Cartridge	12	Mixed Color/Straw
10:1	32000WX	490 ml Cartridge	12	White
10:1	32200	5 gal Pail Adhesive	1	Mixed Color/Straw
10:1	32420	5 gal Pail Activator	1	Mixed Color/Straw
10:1	32910	5 gal Pail Activator	1	Black
10:1	35420	5 gal Pail Activator	1	White
10:1	32800	50 gal Drum Adhesive	1	Mixed Color/Straw

Product	Metals					Coatings		Plastics					Composites			Other	
	Aluminum	Cold Rolled Steel	Galvanized / Zinc Coated	Galvanneal	Stainless Steel	Powder coat	E-Coat	ABS and ASA	Acrylics	Polyamides (Nylons)	Polycarbonate	Rigid PVC	Gelcoats	Fiberglass	RTM	SMC	Rubbers
MA205HV	●	●	●*	●	●	●	●	●	●	●	●	●	●	●	●	●	●
MA320	●*	●*		●*	●	●	●	●		●	●	●	●	●	●	●	●
MA420	●*	●*		●*	●	●	●	●		●	●	●	●	●	●	●	●
MA420FS	●*	●*		●*	●	●	●	●		●	●	●	●	●	●	●	●
MA420W	●*	●*		●*	●	●	●	●		●	●	●	●	●	●	●	●
MA422	●*	●*		●*	●	●	●	●		●	●	●	●	●	●	●	●
MA425	●*	●*		●*	●	●	●	●		●	●	●	●	●	●	●	●
MA550	●*	●*		●*	●	●	●	●		●	●	●	●	●	●	●	●
MA830	●	●	●*	●	●	●	●	●		●	●	●	●	●	●	●	●
MA832	●	●	●*	●	●	●	●	●		●	●	●	●	●	●	●	●
MA920	●*	●*		●*	●	●	●	●		●	●	●	●	●	●	●	●
MA1020	●*	●*		●*	●	●	●	●		●	●	●	●	●	●	●	●
MA1025	●*	●*		●*	●	●	●	●		●	●	●	●	●	●	●	●
MA2015 WHITE						●	●	●		●	●	●	●	●	●	●	●
MA2030 WHITE						●	●	●		●	●	●	●	●	●	●	●
MA2045 WHITE						●	●	●		●	●	●	●	●	●	●	●
MA2230	●	●		●	●	●	●	●		●	●	●	●	●	●	●	●
MA2245	●	●		●	●	●	●	●		●	●	●	●	●	●	●	●
MA2290	●	●		●	●	●	●	●		●	●	●	●	●	●	●	●

\*Surface abrasion required. ● Preferred ● Good \* Use PC120 cleaner/conditioner Blank: Not Recommended, or call ITWPP.

Plexus® MA420 (A0420)

A rapid curing two-part methacrylate adhesive designed for composite bonding applications in the transportation industry because it requires virtually no surface preparation. In addition, this product provides a unique combination of excellent fatigue endurance, outstanding impact resistance, and superior toughness.

Mix Ratio by Vol.	Item #	Size	Items/Case	Color
10:1	35701	490 ml Cartridge	12	Black
10:1	IT101BX	490 ml Cartridge	12	Blue
10:1	IT101X	490 ml Cartridge	12	Mixed Color/Straw
10:1	IT102	5 gal Pail Adhesive	1	Mixed Color/Straw
10:1	IT112	5 gal Pail Activator	1	Mixed Color/Straw
10:1	IT114	5 gal Pail Activator	1	Blue
10:1	IT140	5 gal Pail Activator	1	Black
10:1	IT100	50 gal Drum Adhesive	1	Mixed Color/Straw

Plexus® MA420FS

A two-part methacrylate adhesive designed for structural bonding of thermoplastic, metal, and composite assemblies. Plexus MA420FS is a standard choice for composites automated bonding applications in the transportation industry, because it requires virtually no surface preparation and its rapid fixture time.

Mix Ratio by Vol.	Item #	Size	Items/Case	Color
10:1	IT800X	490 ml Cartridge	12	Blue
10:1	IT804X	490 ml Cartridge	12	Black
10:1	IT112	5 gal Pail Activator	1	Mixed Color/Straw
10:1	IT114	5 gal Pail Activator	1	Blue
10:1	IT140	5 gal Pail Activator	1	Black
10:1	IT801	50 gal Drum Adhesive	1	Mixed Color/Straw

OEM ADHESIVES/SEALANTS

OEM ADHESIVES/SEALANTS

## Plexus® MA420W

A two-part rapid-curing methacrylate adhesive designed for structural bonding of thermoplastic, metal, and composite assemblies providing a faster fixture time. Ideal for composite bonding applications in the transportation industry because it requires virtually no surface preparation. In addition, this product provides a unique combination of excellent fatigue endurance, outstanding impact resistance, and superior toughness.

Mix Ratio by Vol.	Item #	Size	Items/Case	Color
10:1	42000	490 ml Twin Cartridge	12	Blue
10:1	42002	50 gal Drum Adhesive	1	Mixed Color/Straw
10:1	IT114	5 gal Pail Activator	1	Blue

## Plexus® MA422

A two-part methacrylate adhesive designed for composite bonding applications in the transportation and marine industries because it requires virtually no surface preparation. In addition, this product provides a unique combination of excellent fatigue endurance, outstanding impact resistance, and superior toughness.

Mix Ratio by Vol.	Item #	Size	Items/Case	Color
10:1	IT133	490 ml Cartridge	12	Blue
10:1	IT132	5 gal Pail Adhesive	1	Mixed Color/Straw
10:1	IT159	5 gal Pail Activator	1	Blue

## Plexus® MA425

A two-part methacrylate adhesive designed for composite bonding applications in the transportation and marine industries because it requires virtually no surface preparation. In addition, this product provides a unique combination of excellent fatigue endurance, outstanding impact resistance, and superior toughness. Plexus MA425 is blue when mixed.

Mix Ratio by Vol.	Item #	Size	Items/Case	Color
10:1	IT151X	490 ml Cartridge	12	Blue
10:1	IT152	5 gal Pail Adhesive	1	Mixed Color/Straw
10:1	IT159	5 gal Pail Activator	1	Blue
10:1	IT150	50 gal Drum Adhesive	1	Mixed Color/Straw

## Plexus® MA550

A two-part methacrylate adhesive designed for secondary bonding applications in the marine industry because it requires virtually no surface preparation. In addition this product provides a unique combination of excellent fatigue endurance, outstanding impact resistance and superior toughness. This adhesive is bright white and UV stable.

Mix Ratio by Vol.	Item #	Size	Items/Case	Color
10:1	35000X	490 ml Cartridge	12	White
10:1	35420	5 gal Pail Activator	1	White
10:1	35200	5 gal Pail Adhesive	1	Mixed Color/Straw
10:1	35800	50 gal Drum Adhesive	1	Mixed Color/Straw

## Plexus® MA830

A two-part methacrylate adhesive designed for structural bonding of metals without primers. MA830 does a superb job of bonding thermoplastic and composite assemblies with little or no surface preparation. This product provides a unique combination of high strength, excellent fatigue endurance, outstanding impact resistance, and superior toughness.

Mix Ratio by Vol.	Item #	Size	Items/Case	Color
10:1	IT186X	490 ml Cartridge	12	Gray
10:1	IT187X	490 ml Cartridge	12	Gray GB
10:1	IT185	5 gal Pail Adhesive	1	Mixed Color/Straw
10:1	IT258	5 gal Pail Activator	1	Gray
10:1	IT259	5 gal Pail Activator	1	Gray GB
10:1	IT188	50 gal Drum Adhesive	1	Mixed Color/Straw

## Plexus® MA832

An advanced two-part methacrylate adhesive designed for structural bonding of metals without primers. In addition, MA832 does a superb job of bonding thermoplastic and composite assemblies with little to no surface preparation. This product provides a unique combination of high strength, excellent fatigue endurance, outstanding impact resistance, and superior toughness.

Mix Ratio by Vol.	Item #	Size	Items/Case	Color
10:1	IT332X	490 ml Cartridge	12	Gray
10:1	IT331X	490 ml Cartridge	12	Gray GB
10:1	IT330	5 gal Pail Adhesive	1	Mixed Color/Straw
10:1	IT258	5 gal Pail Activator	1	Gray
10:1	IT259	5 gal Pail Activator	1	Gray GB
10:1	IT333	50 gal Drum Adhesive	1	Mixed Color/Straw

## Plexus® MA920

A breakthrough in methacrylate adhesive technology because it combines high strength, excellent fatigue endurance, and outstanding impact resistance into a low odor product. Plexus MA920 requires virtually no surface preparation on most substrates.

Mix Ratio by Vol.	Item #	Size	Items/Case	Color
10:1	35900X	490 ml Cartridge	12	Blue
10:1	IT112	5 gal Pail Activator	1	Mixed Color/Straw
10:1	IT114	5 gal Pail Activator	1	Blue
10:1	IT140	5 gal Pail Activator	1	Black
10:1	35910	50 gal Drum Adhesive	1	Mixed Color/Straw

## Plexus® MA1020

A two-part methacrylate adhesive with very low cure shrinkage and very low odor designed for structural bonding because it requires virtually no surface preparation. In addition, this product provides a unique combination of excellent fatigue endurance, outstanding impact resistance, and superior toughness. Plexus MA1020 is blue when mixed.

Mix Ratio by Vol.	Item #	Size	Items/Case	Color
10:1	IT222X	490 ml Cartridge	12	Blue
10:1	IT220	5 gal Pail Adhesive	1	Mixed Color/Straw
10:1	IT114	5 gal Pail Activator	1	Blue
10:1	IT225	50 gal Drum Adhesive	1	Mixed Color/Straw

## Plexus® MA1025

A two-part methacrylate adhesive with very low cure shrinkage and very low odor designed for structural bonding in the marine industry because it requires virtually no surface preparation. Plexus MA1025 is designed to be used for bonding stringers and liners into fiberglass boats with bond lines up to 1" thick. Plexus MA1025 is blue when mixed.

Mix Ratio by Vol.	Item # (PX)	Size	Items/Case	Color
10:1	IT232X	490 ml Cartridge	12	Blue
10:1	IT236	5 gal Pail Adhesive	1	Mixed Color/Straw
10:1	IT237	5 gal Pail Activator	1	Blue
10:1	IT235	50 gal Drum Adhesive	1	Mixed Color/Straw

## Plexus® MA2000 Series

Plexus MMA white adhesives are two-part methacrylate adhesives formulated as an excellent UV and yellowing resistant white solution. These products are designed for structural bonding of thermoplastic, metal, and composite assemblies in the marine and transportation industries. Combined at a 10:1 ratio, they require minimal, or no surface preparation and provide an exceptional combination of fatigue endurance, impact resistance and superior toughness.

### Plexus® MA2015 White

Mix Ratio by Vol.	Item #	Size	Items/Case	Color
10:1	20155	490 ml Twin Cartridge	12	White

### Plexus® MA2030 White

Mix Ratio by Vol.	Item #	Size	Items/Case	Color
10:1	20305	490 ml Twin Cartridge	12	White

### Plexus® MA2045 White

Mix Ratio by Vol.	Item #	Size	Items/Case	Color
10:1	20455	490 ml Twin Cartridge	12	White

## Plexus® MA2230

Two-part methacrylate adhesive designed for structural bonding of thermoplastic, metal, and composite assemblies. Plexus MA2230 is an excellent choice for composite bonding applications in the marine and transportation industries because it requires virtually no surface preparation and can fill Gaps from 0.03 inches to 1.5 inches. In addition, this product provides a unique combination of excellent fatigue endurance, outstanding impact resistance, and superior toughness.

Mix Ratio by Vol.	Item #	Size	Items/Case	Color
10:1	22303	50 gal Drum Adhesive	1	Mixed Color/Straw
10:1	IT247	5 gal Pail Activator	1	Blue
10:1	IT496	5 gal Pail Activator	1	Black

## Plexus® MA2245

Two-part methacrylate adhesive designed for structural bonding of thermoplastic, metal, and composite assemblies. Plexus MA2245 is an excellent choice for composite bonding applications in the marine and transportation industries because it requires virtually no surface preparation and can fill Gaps from 0.03 inches to 1.5 inches. In addition, this product provides a unique combination of excellent fatigue endurance, outstanding impact resistance, and superior toughness.

Mix Ratio by Vol.	Item #	Size	Items/Case	Color
10:1	22450	490 ml Twin Cartridge	12	Blue
10:1	22451	490 ml Twin Cartridge	12	Black
10:1	32245	50 gal Drum Adhesive	1	Mixed Color/Straw
10:1	IT247	5 gal Pail Activator	1	Blue
10:1	IT496	5 gal Pail Activator	1	Black

## Plexus® MA2290

Two-part methacrylate adhesive designed for structural bonding of thermoplastic, metal, and composite assemblies. Plexus MA2290 is an excellent choice for composite bonding applications in the marine and transportation industries because it requires virtually no surface preparation and can fill Gaps from 0.03 inches to 1.5 inches. In addition, this product provides a unique combination of excellent fatigue endurance, outstanding impact resistance, and superior toughness.

Mix Ratio by Vol.	Item # (PX)	Size	Items/Case	Color
10:1	22903	50 gal Drum Adhesive	1	Mixed Color/Straw
10:1	IT247	5 gal Pail Activator	1	Blue

## Plexus® Cleaner Conditioner PC-120

A chemical cleaner and conditioner designed to improve the long-term bond durability of Plexus adhesives when used for adhering aluminum and stainless steel assemblies. Fast drying at ambient temperatures, parts can be bonded 1 to 3 minutes after the conditioner is applied. Application can be performed by brushing or wiping. Allow the PC-120 to dry slightly before wiping away. Only a thin film of PC-120 is needed. The primer contains a red dye. As long as a red tint is slightly visible on the metal surfaces, sufficient conditioner has been applied. Once the conditioner is dry, the parts are ready to bond. Coverage is about 250 square feet per 500 ml.

Item #	Size
IP120	1 quart Bottle Primer/Conditioner

## Bead Length<sup>2</sup> (inches)

Bead Diameter	50 ml	300 ml	380 ml	400 ml
1/4"	124	740	945	992
3/8"	56	335	420	448
1/2"	30	180	230	240
5/8"	20	120	151	160

NOTES: <sup>2</sup> For methacrylates, epoxies, and silicones.

## EPOXY ADHESIVES

Devcon® advanced epoxy adhesives are used for structural bonding, potting and encapsulating, and come in a variety of cure times and package sizes.

### OEM ADHESIVE SELECTOR GUIDE

	OEM Material	One Minute™ Epoxy Gel	5 Minute™ Epoxy/Epoxy Gel	Dev-Thane™ Adhesives	10 Minute™ Epoxy	2 Ton® Clear Epoxy	Epoxy Plus™ 25	HP 250	ZipGrip® Adhesives
METAL	Aluminum	●	●	●	●	●	●	●	●
	Brass	●	●	●	●	●	●	●	●
	Cast Iron	●	●	●	●	●	●	●	●
	Copper	●	●	●	●	●	●	●	●
	Ferrite	●	●	●	●	●	●	●	●
	Painted metals	●	●	●	●	●	●	●	●
	Plated metals	●	●	●	●	●	●	●	●
	Sheet metal	●	●	●	●	●	●	●	●
	Stainless steel	●	●	●	●	●	●	●	●
	Cold rolled steel	●	●	●	●	●	●	●	●
	Galvanized	●	●	●	●	●	●	●	●
	PLASTIC	ABS	●	●	●	●	●	●	●
Acrylics (PMMA)		●	●	●	●	●	●	●	●
Fiberglass		●	●	●	●	●	●	●	●
Gel coats		●	●	●	●	●	●	●	●
Epoxy		●	●	●	●	●	●	●	●
Polyamides (Nylon) (6,6/6)		●	●	●	●	●	●	●	●
Polyesters (PET/PBA blends)		●	●	●	●	●	●	●	●
Polycarbonate		●	●	●	●	●	●	●	●
PPO and PPO blends		●	●	●	●	●	●	●	●
Vinyls (PVC)		●	●	●	●	●	●	●	●
RIM urethanes		●	●	●	●	●	●	●	●
SMCs		●	●	●	●	●	●	●	●
Styrene resins		●	●	●	●	●	●	●	●
Polyacrylate		●	●	●	●	●	●	●	●
Polyurea		●	●	●	●	●	●	●	●
Cellulosics (CAL, CAB, CAP)		●	●	●	●	●	●	●	●
Polysulfone		●	●	●	●	●	●	●	●
Phenolics		●	●	●	●	●	●	●	●
Laminates	●	●	●	●	●	●	●	●	
WOOD	Wood (hard and soft)	●	●	●	●	●	●	●	●
	Plywood	●	●	●	●	●	●	●	●
	Particle board	●	●	●	●	●	●	●	●
OTHER	Brick	●	●	●	●	●	●	●	●
	Concrete	●	●	●	●	●	●	●	●
	Rubber	●	●	●	●	●	●	●	●
	Honeycomb	●	●	●	●	●	●	●	●
	Ceramics	●	●	●	●	●	●	●	●
Glass	●	●	●	●	●	●	●	●	

Key: ● Excellent Choice ● Good Choice ○ Requires Metal Prep 90™ Blank: Not Recommended.

#### Devcon® 5 Minute® Epoxy

Rapid curing, general-purpose adhesive/encapsulant which easily dispenses and mixes in seconds, dries in 15 minutes and reaches functional strength in 1 hour.

Item #	Size	Items/Case	Dispenser	Nozzle
14250	25 ml Dev-Tube™	24	—	—
14270	50 ml Cartridge	12	14280 (manual)	14285
14210	2.5 oz	24	—	—
DA051	400 ml Cartridge	12	30020 (manual)	3333
14200	15 oz	6	—	—
14630	9 lb	1	—	—

#### Devcon® 5 Minute® Epoxy Gel

Thixotropic, non-migrating gel adhesive with excellent gap filling properties.

Item #	Size	Items/Case	Dispenser	Nozzle
14240	25 ml Dev-Tube™	24	—	—
14265	50 ml Cartridge	12	14280 (manual)	14285
DA052	400 ml Cartridge	12	30020 (manual)	30095

#### Devcon® One Minute™ Epoxy Gel

Lightning fast curing gel adhesive for filling gaps, cracks and holes.

Item #	Size	Items/Case	Dispenser	Nozzle
14277	50 ml Cartridge	12	14280 (manual)	14285

Physical Properties	5 Minute® Epoxy	5 Minute® Epoxy Gel	One Minute™ Epoxy Gel	10 Minute™ Epoxy	2 Ton® Epoxy	Epoxy Plus™ 25	HP 250	Food Grade Pot & Seal
Color	Clear	Opaque	Clear	Black	Clear	Grey	Straw	White
Mix ratio (resin:hardener)	1:1	1:1	1:1	1:1	1:1	1:1	2:1	4:1
Mixed viscosity (cP)	10,000	Gel	70,000	90,000	80,000	70,000	105,000	100,000
Working time¹ (minutes)	3 ~ 6	4 ~ 7	45 sec	10	10	8 ~ 12	25	65
Fixture time² (minutes)	10 ~ 15	10 ~ 15	1	20	20	30 ~ 35	120	360
Functional cure (minutes)	45 ~ 60	45 ~ 60	30 ~ 45	90	90	120	210	1,440
Adhesive tensile lap shear (ASTM D1002)³ (psi)	1,900⁴	2,500	1,600⁴	2,400	2,400	2,250	2,750	3,200
Tensile elongation (%)	1	5	1	5	5	1	20	25
Peel strength (pli)	2 ~ 3	2 ~ 3	2 ~ 3	20 ~ 25	20 ~ 25	2 ~ 3	20 ~ 25	30 ~ 40
Impact resistance (ft-lb/in²)	5.5	6.5	4.5	10	10	6.5	10	12
Maximum dry service temperature (°F)	-40 ~ 200	-40 ~ 200	-40 ~ 200	-40 ~ 200	-40 ~ 200	-40 ~ 200	-40 ~ 200	-67 ~ 250

Notes: ¹The maximum allowable time to mate and position parts after mixing and application of the adhesive. After this interval, parts must not be disturbed. ²The time required for the adhesive to generate sufficient bond strength to allow parts to be handled without deformation of the bond line. ³All tensile strength data per ASTM D1002 on grit-blasted steel, bond line thickness of 0.010". ⁴Bond line thickness of 0.005".

Chemical Resistance	5 Minute® Epoxy	5 Minute® Epoxy Gel	One Minute™ Epoxy Gel	10 Minute™ Epoxy	2 Ton® Epoxy	Epoxy Plus™ 25	HP 250	Food Grade Pot & Seal
ACIDS	○	○	○	○	○	○	○	○
Acetic 10%	○	○	○	○	○	○	○	○
Hydrochloric 10%	○	○	○	○	○	○	○	○
Sulfuric 10%	○	○	○	○	○	○	○	○
ALCOHOLS	○	○	○	○	○	○	○	○
Glycol	○	○	○	○	○	○	○	○
Isopropanol	○	○	○	○	○	○	○	○
Methanol	○	○	○	○	○	○	○	○
KETONES	○	○	○	○	○	○	○	○
Acetone	○	○	○	○	○	○	○	○
Methyl ethyl ketone	○	○	○	○	○	○	○	○
ALKALIS	○	○	○	○	○	○	○	○
Ammonium hydroxide 20%	○	○	○	○	○	○	○	○
Sodium hydroxide 10%	○	○	○	○	○	○	○	○
HYDROCARBONS	○	○	○	○	○	○	○	○
Gasoline (unleaded)	○	○	○	○	○	○	○	○
Mineral spirits	○	○	○	○	○	○	○	○
Motor oil	○	○	○	○	○	○	○	○
SALTS	○	○	○	○	○	○	○	○
Sodium chloride	○	○	○	○	○	○	○	○
Trisodium phosphate	○	○	○	○	○	○	○	○

Key: ● Excellent ○ Very Good ○ Fair ○ Poor

#### Devcon® 10 Minute™ Epoxy

Flexible epoxy provides excellent adhesion to metals and superior peel, impact and chemical resistance.

Item #	Size	Items/Case	Dispenser	Nozzle
14251	50 ml Cartridge (Clear)	12	14280 (manual)	14285
14255	50 ml Cartridge (Black)	12	14280 (manual)	14285

#### Devcon® 2 Ton® Epoxy

Extremely strong, medium-cure, water-resistant adhesive.

Item #	Size	Items/Case	Dispenser	Nozzle
14310	25 ml Dev-Tube™	24	—	—
14260	50 ml Cartridge	12	14280 (manual)	14285
14355	400 ml Cartridge	12	30020 (manual)	3333

#### Devcon® Epoxy Plus™ 25

Rubber-toughened structural adhesive with superior peel, impact and fatigue resistance.

Item #	Size	Items/Case	Dispenser	Nozzle
14278	50 ml Cartridge	12	14280 (manual)	14285

#### Devcon® HP 250

High-performance, toughened structural adhesive with outstanding environmental, impact and chemical resistance.

Item #	Size	Items/Case	Dispenser	Nozzle
14415	400 ml Cartridge	1	30020 (manual)	30095

#### Devcon® Food Grade Pot & Seal

An epoxy potting compound acceptable for meat and poultry plants. It is ideal for bonding filter screens to frames.

Item #	Size	Items/Case	Dispenser	Nozzle
DA999	400 ml Cartridge	6	Contact Technical Services	Contact Technical Services

**Permatex® ZipGrip® General Purpose Instant Adhesives**

General purpose formulations for bonding metals, plastics and rubber in all combinations. Gels are ideal for vertical or inverted surfaces.

Item #	Size	Items/Case
70144	14 g Bottle	12
70350	1 oz Bottle	10

**Permatex® ZipGrip® Toughened Purpose Instant Adhesives**

Toughened ethyl versions are modified with elastomeric compounds to improve impact, peel and general toughness of cyanoacrylates.

Item #	Size	Items/Case
72250	1 oz Bottle	10
72261	1 lb Bottle	1

**Devcon® Silite® Silicone RTV**

Single-component sealant for gasketing, sealing, bonding, and weatherproofing applications. Cures at room temperature to a clear, flexible silicone rubber. Can be used to seal window plates, ceramic tile, and bond gaskets. Excellent resistance to a wide range of weather and temperatures ranging from -60° to 450°F (-50° to 232°C). Acceptable for use in meat and poultry plants.

Listed under NSN Stock #8040-01-193-3312, qualifies under MIL-A-46106A, Galv. Repair.



Item #	Size	Items/Case	Color
17150	10.3 oz Cartridge	12	Clear
17130	10.3 oz Cartridge	12	Red

Product	Item Number	Container Size	Viscosity	Mixed Color	Type	Gap Filling	Adhesive Tensile Shear	Service Temperature	Cure Speed Steel-Plastic-Rubber
GPE 3 <sup>1</sup>	70144	14 g bottle	3 cP	Clear	Ethyl	0.003"	3,200 psi	-65 to 200°F	5-10 / 3-5 / <2 sec
GPE 30 <sup>1</sup>	70350	1 oz bottle	30 cP	Clear	Neomer Ethyl	0.004"	3,200 psi	-65 to 200°F	5-12 / 5-13 / <6 sec
TE 2400 <sup>2</sup>	72250 72261	1 oz bottle 1 lb bottle	2,400 cP	Clear	Ethyl	0.009"	3,700 psi	-65 to 280°F	40-70 / 25-50 / 25-50 sec

NOTES: <sup>1</sup> Commercial Item Standard A-A-3097, Type II, Class 1    <sup>2</sup> Commercial Item Standard A-A-3097, Type II, Class 3

**URETHANE ADHESIVES**

Devcon® urethane formulations are primerless adhesives that bond metals, plastic, galvanized metal and other hard-to-bond substrates. They offer rapid curing and exceptional flexibility.



Physical Properties	Dev-Thane™ 5	Chemical Resistance	Dev-Thane™ 5
Color	Black	ACIDS	
Mix ratio (resin: hardener)	1:1	Acetic 10%	○
Mixed viscosity (cP)	100,000	Hydrochloric 10%	●
Fixture time (minutes)	20	Sulfuric 10%	●
Working time (minutes)	2	ALCOHOLS	
Peel strength (pli)	65 ~ 75	Glycol	○
Functional cure <sup>1</sup> (hours)	1.5	Isopropanol	●
Tensile Elongation (%)	200	Methanol	○
Cured hardness (ASTM D2240) (Shore D)	63	KETONES	
Adhesion Tensile Lap Shear (ASTM D1002) (psi)	2,750	Acetone	○
		Methyl ethyl ketone	○
		ALKALIS	
		Ammonium hydroxide 20%	○
		Sodium hydroxide 10%	●
		HYDROCARBONS	
		Gasoline (unleaded)	●
		Mineral spirits	●
		Motor oil	●
		SALTS	
		Sodium chloride	●
		Trisodium phosphate	●

NOTES: <sup>1</sup> Faster cure times can be achieved by heating.

**Devcon® Dev-Thane™ 2**

Primerless, fast-setting, two-part urethane adhesive for high-performance bonding of a variety of substrates such as aluminum, steel, ABS, urethane and composites.

Item #	Size	Items/Case	Dispenser	Nozzle
14510	400 ml Cartridge	10	14410 (manual)	3333

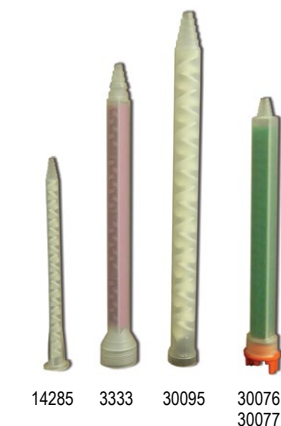
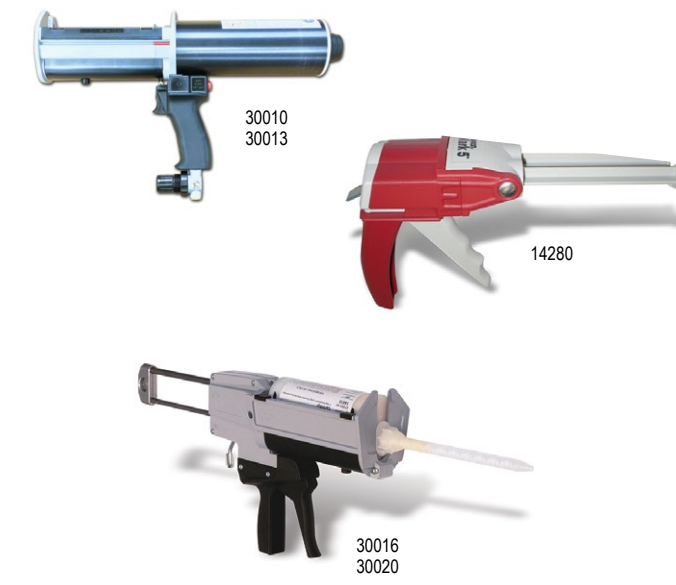
**DISPENSING EQUIPMENT**

**GUNS**

Item #	Description
14280	Mark V™ Gun Manual Dispensing Gun 50/35 ml 1:1, 2:1, and 10:1 Ratio Applicator
30016	Manual Cartridge Dispensing Gun 490 ml 10:1 Ratio Applicator
30020	Manual Cartridge Dispensing Gun 400 ml 1:1 and 2:1 Ratio Applicator
30010	Pneumatic Cartridge Dispensing Gun 400 ml 1:1 and 2:1 Ratio Applicator
30013	Pneumatic Cartridge Dispensing Gun 490 ml 10:1 Ratio Applicator

**NOZZLES**

Item #	Description
14285	Mark V™ Mix Nozzle 50/35 ml 1:1, 2:1, and 10:1 Mix Nozzle
3333	Static Mix Nozzle 1:1, 2:1 and 10:1 Mix Nozzle
30095	Static Mix Nozzle (500 series) 400 ml 1:1 and 2:1 Mix Nozzle
30076	Static Mix Nozzle 490 ml 10:1 Mix Nozzle
30077	Mix Nozzle 490 ml 10:1 Bulk Mix Nozzle (600)



**Approved Equipment Manufacturers**

For more information, please contact:

**GS Manufacturing**  
985 W. 18th Street  
Costa Mesa, CA 92627  
Phone: (949) 642-1500  
E-mail: gsmfg@pacbell.net  
gsmfg.com

**MVP Corporate Headquarters**  
10535 Hardin Valley Road  
Knoxville, TN 37932  
Phone: (865) 686-5670  
E-mail: info@mvpind.com  
mvpind.com

## SPRAYABLE SYNTACTIC MATERIALS

- Excellent strength-to-weight ratio
- Labor Savings – SprayCore® is applied to a controlled thickness by a single person
- Increase Productivity – Fast cure cycle with low exotherm
- Excellent core material that can be applied up to a thickness of ¾ inches
- Superior Bonding Strength – Excellent bedding material for products such as plywood, balsa, and other coring materials
- Will not rot like wood cores
- Stop bulk laminate print through
- Parts have a high impact resistance and high core shear since there is a total chemical bond from the skin coat through to the bulk laminate
- Superior cosmetics and better gloss
- Build stronger and lighter parts faster



## BARRIER COAT

### SC 1500-LS

A sprayable premium vinyl ester barrier coat applied directly behind the gel coat. MEKP catalyst is not included.

Item #	Size	Items/Case
103993	1500-LS Drum Unlined	1

### SC 1800-LS and 1800-LS Black

A sprayable premium vinyl ester barrier coat applied directly behind the gel coat. MEKP catalyst is not included.

Item #	Size	Items/Case
103995	1800-LS Light Gray Drum Unlined	1
103975	1800-LS Black Drum Unlined	1

## CORING/BULK PRINT BLOCKER

### SC 2000-OS and 2000-OS LS

A sprayable resin based matrix filled with multi-sized, hollow microspheres that is VOC compliant. It can be used as a bulk print blocker and a coring material. It makes parts stronger, lighter, improves impact resistance, cosmetics while increasing productivity and profitability; MEKP catalyst is not included.

Item #	Size	Items/Case
103994	2000-OS LS Drum Unlined	1

### SC 2045

A uniquely blended compounded resin that can be used as a coring material or a bulk print blocker to enhance the cosmetic appearance, rigidity and speed of production of fiberglass reinforced plastic products. When used as a fiberglass print barrier, SC 2045 is applied behind the "skin coat" laminate. It greatly reduces the transfer of the fiberglass pattern of the laminates behind the coring material onto the gel coat surface. MEKP catalyst is not included.

Item #	Size	Items/Case
103202	SHLD-2045 LS Drum Lined	1
103211	SHLD-2045 LS Drum Unlined	1
103412	MR-100 Blowing Agnt	1

### SC 4000 HDT

A multi-functional, high heat distortion, sprayable material for mold building that is VOC compliant. MEKP catalyst is not included.

Item #	Size	Items/Case
103979	4000 HDT Drum Unlined	1

### SC 6000

A unique resin matrix that can be used in a variety of ways to enhance the cosmetic appearance, rigidity and speed of production of fiberglass reinforced plastic products. MEKP catalyst is not included.

Item #	Size	Items/Case
103201	CORE-6000 Drum Lined	1

### SC 7315

A unique micro balloon filled resin matrix that can be used in a variety of ways to enhance the cosmetic appearance, rigidity and speed of production of fiberglass reinforced plastic products. It is an attractive alternative to other core materials such as plywood, PVC foams, end-grained balsa and polyester mats. SC 7315 is sprayed into place at the desired thickness and is typically lower in cost than other core materials. MEKP catalyst is not included.

Item #	Size	Items/Case
103216	CORE-7315 Drum Unlined	1
103412	MR-100 Blowing Agnt	1

## RADIUS COMPOUND

### SC 900

A ceramic compound resin used to prevent air voids between the gel coat and the fiberglass laminate, most commonly used in tight radii. Works well in open and closed mold processes. MEKP catalyst is not included.

Item #	Size	Items/Case
103350	900 Drum Unlined	1

### SC 1050

A ceramic compound resin used to prevent air voids between the gel coat and the fiberglass laminate, most commonly used in tight radii. MEKP catalyst is not included.

Item #	Size	Items/Case
103212	1050-LS Neutral Drum Unlined	1

### SC 1060

A ceramic compound resin used to prevent air voids between the gel coat and the fiberglass laminate, most commonly used in tight radii. MEKP catalyst is not included.

Item #	Size	Items/Case
103305	1060 5 gal Pail	1

### SC 1070

High-Performance ceramic compound resin used in a variety of ways to prevent air voids, enhance the cosmetic appearance, rigidity and speed of production of fiberglass reinforced plastic products, and meets the stringent requirements of the Marine, Transportation, and Tub & Shower markets.

Item #	Size	Items/Case
103769	Drum Unlined	1
103770	5 gal Pail	1

## ADHESIVE PUTTIES

### SC PDR 6000

Strong, ultra-light (6 lbs/gal) polyester adhesive putty that is primarily used to bond fiberglass parts. MEKP catalyst is not included.

Item #	Size	Items/Case
103108	PDR 6000 Slow Drum Lined	1
103107	PDR 6000 Slow Pail	1

### SC PDR 9000

A strong, lightweight (9 lbs/gal) polyester adhesive filler that is used to bond fiberglass parts. MEKP catalyst is not included.

Item #	Size	Items/Case
103104	PDR 9000 Slow Drum Lined	1
103109	PDR 9000 Fast Drum Lined	1
103121	PDR 9000 Slow 5 gal Pail	1

### SC ALPHAFILL LIGHTWEIGHT

A high quality, tack-free, lightweight putty with excellent adhesion to metal, galvanized metal, aluminum, fiberglass and wood. BPO catalyst is not included.

Item #	Size	Items/Case
100009	AlphaFill 5 gal Pail	1



**PLUG BUILDING**

**SC 2000-HS**

A CNC machined, sprayable polyester resin matrix used for plug building. Catalyst is not included.

Item #	Size	Items/Case
103837	2000-HS Drum Unlined	1

**SC 4500**

A CNC machined vinyl ester blend matrix used for plug building. Catalyst is not included.

Item #	Size	Items/Case
103840	4500 Drum Unlined	1

**MOLD BUILDING**

**SC VELR 4000**

A DCPD/vinylester laminating resin. This product is a low shrink resin that rapidly wets out the fiberglass reinforcement and cures uniformly with a low exotherm. MEKP catalyst is not included.

Item #	Size	Items/Case
103409	VELR-4000 VE Resin Drum Unlined	1

**SC 4055**

A ceramic compounded vinyl ester/polyester resin blend that was formulated for the production of fiberglass molds. This product will enhance the cosmetic appearance, rigidity and speed of production of fiberglass reinforced molds. MEKP is not included.

Item #	Size	Items/Case
103404	VE-TOL-4055 Drum Molding Shld Lined	1

**SC 4600 HTT**

A promoted, vinyl ester blended premium mold building resin developed for the fabrication of FRP tooling in multiple pull and high temperature applications.

Item #	Size	Items/Case
103846	4600 HTT Drum Unlined	1

**SC 4750**

A High Performance shrink controlled filled Tooling Resin; it is formulated to reproduce exact shapes of master and meets the stringent Requirements of the Marine, Transportation, and Tub & Shower markets. Formulated with a unique Low HAP chemistry, is MACT Compliant and meets all current Federal regulations regarding emissions.

Item #	Size	Items/Case
103857	4700 5 gal Pail	1
103852	4700 Drum Unlined	1

**SPRAYABLE FILLER**

**SC ALPHACOAT® 1700 AND ALPHACOAT® 1710**

A sprayable two-part polyester based filler/ glazing compound that is VOC compliant. Excellent for application over iron, metal, aluminum, fiberglass, wood, and polyester fillers. MEKP catalyst is not included.

Item #	Size	Items/Case
100065	AlphaCoat® 1700 Drum Unlined	1
100066	AlphaCoat® 1710 Drum Unlined	1

**SPECIALTY PRODUCTS**

**SC 2000-CM**

A sprayable polyester matrix filled with multi-sized, hollow microspheres developed specifically for compression molding. It also can be injected into an empty closed mold cavity to make preform cores. MEKP catalyst is not included.

Item #	Size	Items/Case
103981	2000 CM Drum Unlined	1

**SC 5000**

A pourable or injectable syntactic transom coring material. MEKP catalyst is not included.

Item #	Size	Items/Case
103865	5000 5 Gal Pail	1
103866	5000 Drum Unlined	1



Product	Description	Mix Ratio (%)	Preferred Red-Dye Catalyst	Styrene (%)	Approx. Gel Time (min)	Approx. Gel to Peak Range (min)	Density Range (lbs/gal)	Viscosity (cps)	Peak Exotherm (°F)
<b>BARRIER COAT</b>									
SC 1800-LS	Fast cure time	1.50 MEKP	DHD-9 MEKP-900	22	3-5	3-7	6.20-6.80	4,000-7,000 (HB #4 @ 20rpm)	360-400°
SC 1800-LS	Medium cure time	1.50 MEKP	DHD-9 MEKP-925	22	3-5	3-7	6.20-6.80	4,000-7,000 (HB #4 @ 20rpm)	360-400°
<b>CORING/BULK PRINT BLOCKER</b>									
SC 2045*	Ceramic compounded resin with a very fast gel and cure cycles; Adjustable high and low densities	1.50 MEKP 2.00 MEKP/ 1.50 MR-100	DHD-9 MEKP-9 MEKP-900	30	4-8 0.5-1.5	5-8 4-8	10.00-10.50 (-8.70-9.14)	3,000-5,000 (RVF #4 @ 20rpm)	250-325° 325-375°
SC 2000-OS**	Effectively blocks bulk print through in minimum thickness of .090" and can be used to imbed plywood or other sheet core materials	1.75-2.25 MEKP	DHD-90 MEKP-900	35	2.5-3.5	7-9	5.60-6.00	13,000-15,000 (HB #4 @ 20rpm)	285-345°
SC 2000-OS LS**	Effectively blocks bulk print through in minimum thickness of .090" and can be used to imbed plywood or other sheet core materials	1.75-2.25 MEKP	DHD-90 MEKP-900	27	2.5-3.5	6-9	5.60-6.00	13,000-15,000 (HB #4 @ 20rpm)	285-345°
SC 6000	Economical solution for a variety of applications	1.50 MEKP	DHD-9 MEKP-900	31	5-10	15-20	5.80-6.30	13,000-15,000 (RVF #5 @ 20rpm)	200-250°
SC 7315*	Unique micro balloon ceramic resin with adjustable low and high densities	1.50 MEKP 2.00 MEKP/ 1.50 MR-100	MEKP-925 MEKP-9	32	4-8 0.5-1.5	6-10 4-8	5.80-6.30 (-4.29-4.67)	10,000-14,000 (RVF #5 @ 20rpm)	300-350°
<b>RADIUS COMPOUND</b>									
SC 900	Longer gel time allows good working time with rollers	1.50 MEKP	DHD-9 MEKP-9 MEKP-900	25	21-26	21-26	10.80-11.30	20,000-25,000 (RVF #6 @ 20rpm)	250-300°
SC 1050	Can be sprayed and chopped while wet	1.50 MEKP	DHD-9 MEKP-900	27	25-35	10-17	10.80-11.30	15,000-20,000 (RVF #6 @ 20rpm)	250-300°
SC 1060	Can be brushed and chopped while wet	1.50 MEKP	DHD-9 MEKP-900	30	25-30	10-17	10.80-11.30	25,000-35,000 (RVF #6 @ 20rpm)	250-300°
SC1070	High-Performance ceramic compound resin	1.5 - 2.5 MEKP	MEKP-9 Kadox-L50 Kadox-D50"	27	25-125	10-75	8.20-8.80	*180,00-400,000 (T-E @ 5 rpm)"	240-275
<b>ADHESIVE PUTTIES</b>									
PDR 6000	Formulated for slow gel time	1.50 MEKP	DDM-9 MEKP-9 DDM-30	25	75-105	15-30	6.10-6.60	600,000-700,000 (RVF T-E @ 5rpm)	200-250°
PDR 9000	Formulated for 3 different gel times	1.50 MEKP	DDM-9 MEKP-925 DDM-30	20	40-50 (Fast) 80-105 (Slow)	10-25 25-30	8.79-9.50	Fast and Slow: 750,000-850,000 (RVF T-E @ 5rpm)	180-250° 180-225°
AlphaFill Lightweight	Excellent adhesion and featheredge	2.00 BPO	BPO	15-20	3-5	N/A	9.70	102,000-120,000 (SSAWT-E Bar @ 5rpm)	N/A
<b>PLUG BUILDING</b>									
SC 2000-HS	Developed for easy routing with CNC equipment	1.75-2.25 MEKP	DHD-9 MEKP-900	33	2.5-3.5	7-9	4.80-5.20	16,000-18,000 (HB #4 @ 20rpm)	290-325°
SC 4500	High HDT	1.75-2.25 MEKP	MEKP-925	26	8-13	14-20	5.30-6.00	9,000-15,000 (HB #4 @ 20rpm)	280-320°
<b>MOLD BUILDING</b>									
SC 4000 HDT	Coring material w/ high heat tolerance when used with MR-100 Blowing Agent****	1.50-2.20 MEKP	DHD-9 MEKP 925	29	3-4	5-8	5.25-5.75	12,000-14,000 (HB #4 @ 20rpm)	300-350°
SC 4055***	Can be applied at 20-30 mills directly onto the gelcoat	1.50 MEKP 2.00 MEKP/ 1.50 MR-100	DHD-9 MEKP 925	26	8-13	5-15	9.70-10.70	8,000-11,000 (RVF #5 @ 20rpm)	270-305°
SC VELR 4000	Rapidly wets out and cures uniformly with a low exotherm	1.50 MEKP	DHD-9 MEKP-925	32	15-25	4-10	8.80-9.20	450-650 (RVF #2 @ 20rpm)	325-375°
SC 4600 HTT	Vinylester blended premium mold building resin	1.50 MEKP	DHD-9, L50 MEKP-925, K10	20-24	12-20	20-30	10.40-11.10	7,000-11,000 (RVF #5 @ 2.5/20rpm)	210-255°
SC 4750	High performance shrink controlled filled Tooling Resin	1.50 MEKP	MEKP-900 MEKP-925 MEKP-925H		30-45	5-12	12.3-12.8	3,000-4,500 (LVT #3 @ 30rpm)	280-330°
<b>SPRAYABLE FILLER</b>									
AlphaCoat 1700	Extremely fast cure time	2.00 MEKP	MEKP-9H DDM-9	20	3-6	60-90 (Dry to sand)	9.10-9.60	1,200-1,400 (LVT #3 @ 30rpm)	N/A
AlphaCoat 1710	Extremely fast cure time	2.00 MEKP	MEKP-9H DDM-9	20	3-6	60-90 (Dry to sand)	11.75-12.25	1,600-1,850 (LVT #3 @ 30rpm)	N/A
<b>SPECIALTY PRODUCTS</b>									
SC 2000-CM	Developed specifically for compression molding. Makes a product stiffer without adding more fiberglass laminates	1.75-2.25 MEKP	DHD-9, DDM-9 MEKP-900	28	20-30	20-30	4.80-5.20	18,000-22,000 (HB #4 @ 20rpm)	>220°
SC 5000	Pourable or injectable syntactic transom coring material	1.00 MEKP	MEKP-9H DDM-9	17	20-30	20-30	8.25-8.75	25,000-35,000 (HB #4 @ 20rpm)	125-160°

\*Can be used with or without the MR-100 Blowing Agent for density weight reduction. \*\*Does not use MR 100 Blowing Agent however, can be used to bed other materials. \*\*\*Can be used with MR-100 Blowing Agent for added stiffness. \*\*\*\*Addition of MR-100 Blowing Agent is optional.

## Epoxyes on Metal:

1. Thoroughly clean the surface with Devcon® Cleaner Blend 300 or any appropriate non residual solvent cleaner eg. Acetone, MEK to remove all oil, grease and dirt.

2. Grit blast surface area following at least ISO 8501 SA 2 ½ (Very Thorough Blast Cleaning) and or SSPC-SP 10 (Near White Metal). When grit blasting is not possible the surface may be prepared following SSPC-SP 3 until at least "Condition A" is achieved. The required surface profile depth is 3-5 mils (75-125µm). Note: For metals exposed to sea water or other salt solution, grit-blast and high-pressure-water-blast the area, then leave overnight to allow any salts in the metal to "sweat" to the surface. Repeat blasting to "sweat out" all soluble salts. The salt contamination level is recommended to not exceed 20mg/m² (2µg/cm²).

3. Clean surface again with Devcon® Cleaner Blend 300 or any appropriate non residual solvent cleaner eg. Acetone, MEK. To remove all traces of oil, grease, dust or other foreign substances from the substrate. Dust contamination level should not exceed Level 2 prior coating applications in accordance to ISO 8502-3.

4. Repair surface as soon as possible to eliminate any changes or surface contaminants.

**WORKING CONDITIONS:** Ideal application temperature is 55°F to 90°F (13-32°C). In cold working conditions, directly heat repair area to 100-110°F (38-43°C) prior to applying epoxy and maintain at this temperature during product cure to dry off any moisture, contamination or solvents, as well as to achieve maximum performance properties. It's not recommended to apply the product when the temperature of the substrate is less than 5°F (3°C) above the Dewpoint, or the Relative Humidity is higher than 85%.



Before

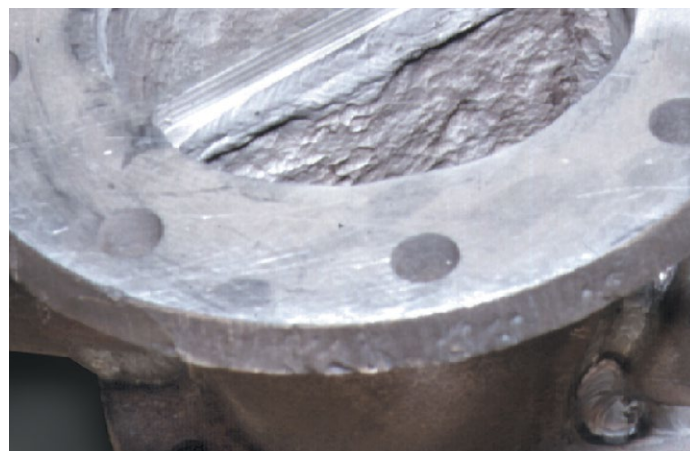
## Epoxyes on Concrete:

**Concrete & Masonry:** Begin with a sound, clean, dry and roughened, oil-free application surface, as it is essential to the success and performance of this product.

For proper surface preparation, refer to Concrete or Masonry Surface Preparation as detailed by: SSP/NACE SSPC-SP13/NACE 6, or ICRI No. 310.2R, CSP 1-3. for proper surface preparation guidelines. As seen in the Application section below, a primer sealer is required. Atmospheric: SSPC-SP13/NACE 6, or ICRI No. 310.2R, CSP 1-3 Immersion: SSPC-SP13/NACE 6-4.3.1 or 4.3.2 or ICRI No. 310.2R, CSP 1-5.

**NEW POURED CONCRETE,** allow to fully cure (28 days @ 70°F (21°C) prior to application. Remove any curing membrane by sanding or etching with a strong detergent. Remove any laitance if present. **OLD CONCRETE,** thoroughly clean surface with a grease-cutting detergent to remove grease and oils, and remove any loose or unsound concrete by chipping, scarifying, shotblasting, sanding, or grinding. Proceed as for new poured concrete.

**PREVIOUSLY COATED CONCRETE,** applications should be considered short term because the coating system is only as strong as its weakest component. Remove any peeling or degraded paint by sanding or using a paint stripper. For intact paint, thoroughly clean the surface with a strong detergent, then lightly sand to remove any gloss. Treat any areas worn down to the original concrete as bare concrete.



After

## Flexanes:

For **METAL SURFACES,** thoroughly clean area to be repaired, rebuilt, or lined with Devcon® Cleaner Blend 300 or any appropriate non residual solvent cleaner eg. Acetone, MEK to remove all oil, grease and dirt. Roughen surface by grinding with a coarse wheel or an abrasive disc pad. To prime this surface, apply a coat of Devcon® FL-10 Primer and allow to dry tack-free for 5-15 minutes. If the metal surface requires maximum tear resistance or is exposed to moisture, or if submerged in water, use Devcon® FL-10 and Devcon® FL-20 Primer.

For **RUBBER SURFACES,** thoroughly clean area with an abrasive pad and Devcon® Cleaner Blend 300. Surface can also be roughened with a grinding wheel so that it is coarse and free from oil and dirt that may clog the "pores" of the rubber. Wipe or roughen surface with Cleaner Blend 300 or any appropriate non residual solvent cleaner eg. Acetone, MEK until the cloth no longer picks up the colour of the rubber. The rubber should appear new or deeper in colour. To prime this surface, apply a coat of Devcon® FL-20 Primer and allow to dry tack-free for 15-20 minutes.

For **MAXIMUM ADHESION,** sandblast the surface with an angular abrasive until a minimum depth profile of 2-3 mils is met. Blast to near-white finish specification SSPC-SP10 (Steel Structure Painting Council). Prime surface immediately after sandblasting to prevent oxidation.

## MRO PRODUCT SELECTOR GUIDE

MRO Applications	Plastic Steel® Putty (A)	Aluminum Putty (F)	Plastic Steel® (B)/ Aluminum Liquid (F-2)	Titanium Putty	Stainless Steel Putty (ST)	Ceramic Repair Putty/Compound	Brushable Ceramic	EZ-Spray Ceramic	Wear Guard™ 300RTC High-Temp/High Impact	DFenseBlok™/DFense Blok™ Fast Cure (FC)	DFense Blok™ Quick Patch	Wet Surface Repair Putty (UW)
Acid Resistant Coating				♦		♦	♦	♦				
Casting Repair	♦	♦		♦	♦							♦
Chemical Resistant Products / Coatings				♦		♦	♦	♦				
Chocking, Leveling Compound			♦									
Coating (Impact, Abrasion)				♦		♦	♦	♦	♦	♦	♦	
Collection Bins										♦		
Condenser Tube Sheet Coating						♦	♦	♦		♦		
Corrosion Resistant Coating						♦	♦	♦	♦	♦		
Cyclones									♦	♦		
Fans/Exhauster Fan Blades						♦			♦	♦		
Flotation Cells							♦	♦		♦		
Holding Fixtures (Making Molds)			♦									
Hoppers (Rebuild & Coat)							♦	♦	♦	♦		
Leaks (Drums, Pipes, Tanks)	♦			♦							♦	♦
Lining Coal Chutes									♦	♦	♦	
Machinable Repair Material	♦	♦	♦	♦	♦							
Meat and Poultry Plants	♦			♦	♦		♦	♦				
Pipe Elbow Coatings/ Linings									♦	♦		
Pulverizers/Mills									♦	♦		
Pump Repairs – Slurry				♦		♦				♦		
Pump Repairs – Water				♦		♦	♦	♦				♦
Rebuild Worn Threads/ Keyways/Metal	♦		♦	♦								
Repairing Engine Blocks	♦			♦								
Screw Conveyors										♦		
Shaft Repairs				♦								
Tank Linings						♦	♦	♦				♦
Tank Repairs (Holes)	♦			♦								♦
Valve Rebuild/Repairs	♦	♦		♦		♦	♦	♦				
Wet/Damp Surface Bonding												♦

If you have questions, please contact Technical Service: 855-489-7262

WEARING COMPOUNDS/EPOXIES/URETHANES

WEARING COMPOUNDS/EPOXIES/URETHANES

## DEVCON® DFENSE BLOK™ WEARING COMPOUNDS

Specially formulated wear-resistant epoxy coatings that protect dry materials handling and storage equipment from abrasion, corrosion and wear. The DFense Blok™ product line is truly an advanced epoxy technology with quicker functional cure times and better abrasion resistance.

### Devcon® DFense Blok™

A bead-filled epoxy compound formulated to significantly outlast traditional wear and abrasion products while providing superior protection.

- 4X better abrasion resistance than competition
- 7X better drop impact

Item #	Size	Items/Case
11330	30 lb	1

### Devcon® DFense Blok™ Fast Cure (FC)

A bead-filled epoxy compound that allows equipment to be returned to service in 2 hours.

- Non-sagging, good adhesion
- Withstands operating temperature, as high as 300°F

Item #	Size	Items/Case
11350	9 lb	1

### Devcon® DFense Blok™ Power Mixer

Recommended for most effective way to thoroughly mix DFense Blok™ Wearing Compound.

- Durable steel paddle with three blades; 2X faster than drill-style mixers
- Plugs into standard 120V outlet.

Item #	Size	Items/Case
11301	5 gal Mixer	1

### Devcon® DFense Blok™ Surface Wetting Agent

A thixotropic epoxy gel system that improves the ease of application and cured adhesion properties of DFense Blok™.

- Zero wait time before applying DFense Blok™
- Orange color for easy visual inspection

Item #	Size	Items/Case
11340	1 lb	2

### Devcon® DFense Blok™ Quick Patch

The only ceramic bead-filled wear and abrasion resistant epoxy for emergency repair.

- Eliminates down-time with exceptionally fast cure
- Repairs holes, leaks and cracks

Item #	Size	Items/Case
11320	1 lb	6



WATCH OUR  
IMPACT TEST!



Physical Properties	Devcon® DFense Blok™ With Surface Wetting Agent	Devcon® DFense Blok™ Fast Cure (FC)	Devcon® DFense Blok™ Quick Patch	Devcon® DFense Blok™ Surface Wetting Agent
Color	Grey	Grey	Grey	Orange
Mix ratio by weight/volume (resin:hardener)	2:1/100:45	2:1/2:1	1:1/1:1	2:1/100:44
Mixed viscosity (cP)	Putty	Putty	Putty	Thixotropic Gel
Functional cure (hours)	4-5	2-3	30 minutes	4-5
Pot life (minutes @ 75°F)	25	15	4	12-15
Specific volume (inches <sup>3</sup> /pound)	12.6	13.5	14.89	24.7
Coverage per pound (inches <sup>2</sup> @ 1/4" thickness)	50	53	60	1,860 @ 12 mils
Cured hardness (ASTM D2240) (Shore D)	77	80	84	71
Cured shrinkage (ASTM D2566) (inch/inch)	0.0005	0.0008	0.0010	N/A
Adhesive tensile shear (ASTM D1002) (psi)	2,616	2,764	2,495	2,616
Compressive strength (ASTM D695) (psi)	7,145	7,178	6,166	5,032
Flexural strength (ASTM D790) (psi)	7,876	7,488	4,880	6,700
Coefficient of thermal expansion (ASTM D696)[(in)/(in x °F)] x 10 <sup>-6</sup>	29	33	31	N/A
Dielectric constant (ASTM D150) (1 kHz)	49	45	51	N/A
Maximum continuous dry service temperature (°F)	300	300	200	300
Maximum continuous wet service temperature (°F)	140	140	N/A	140

Chemical Resistance	Devcon® DFense Blok™ With Surface Wetting Agent	Devcon® DFense Blok™ Fast Cure (FC)	Devcon® DFense Blok™ Quick Patch	Devcon® DFense Blok™ Surface Wetting Agent
ACIDS Acetic 10% Hydrochloric 10% Sulfuric 10%	●●●	●●●	●●●	●●●
ALCOHOLS Methanol Isopropanol	○	○	○	○
KETONES Acetone Methyl ethyl ketone	○	○	○	○
ALKALIS Ammonium hydroxide 20% Sodium hydroxide 10%	●●	●●	●●	●●
HYDROCARBONS Gasoline (unleaded) Mineral spirits	○●	○●	●●	○●
CHLORINATED HYDROCARBONS 1-1-1 Trichloroethane	●	●	●	●
SALTS Sodium chloride Trisodium phosphate	●●	●●	●●	●●

Key: ● Excellent ● Very Good ○ Fair ○ Poor

WEARING COMPOUNDS/EPOXIES/URETHANES

WEARING COMPOUNDS/EPOXIES/URETHANES

## WEARING COMPOUNDS

Specially formulated wear-resistant epoxy coatings that protect dry materials handling and storage equipment from abrasion, corrosion and wear. These products are trowelable, non-sag putties available in large particulate, high impact, and high temperature formulas.

### Devcon® Wear Guard™ 300RTC

Wear Guard 300RTC is a revolutionary wear and abrasion alumina ceramic bead-filled Novalac epoxy compound. Wear Guard 300RTC is formulated to significantly outlast traditional wear and abrasion products while also providing superior performance in wet and dry hot conditions up to 300°F/150°C.

Item #	Size	Items/Case
11430	30 lb	1

### Devcon® Wear Guard™ High Load

Alumina ceramic bead-filled epoxy system with outstanding abrasion resistance for severe service conditions with particulate greater than 1/8".

- Trowels onto overhead or vertical surfaces without sagging
- Ideal for repairing scrubbers, ash handling systems, pipe elbows, screens, and chutes

Item #	Size	Items/Case
11490	30 lb	1

### Devcon® Wear Guard™ High Temp

High-density, ceramic bead-filled epoxy system for maximum wear and abrasion resistance in high temperature applications.

- Heat-cured, trowelable system that gives up to 30% improvement over conventional wear compounds
- Withstands continuous service temperatures to 450°F

Item #	Size	Items/Case
11483	24 lb	1

### Devcon® Tile Adhesive

High-strength, trowelable adhesive that cures at room temperature.

- Bonds ceramic tile to vertical, curved, and overhead surfaces and repairs loose ceramic tiles
- Excellent chemical resistance to acids and alkalis

Item #	Size	Items/Case
11495	20 lb	1

### Devcon® Wear Guard™ Fine Load

High-density, micro-alumina ceramic bead-filled epoxy system for protecting equipment that handles particulate smaller than 1/8".

- Withstands operating temperatures as high as 300°F
- Outstanding resistance to a wide range of chemicals

Item #	Size	Items/Case
11470	30 lb	1



Physical Properties	Devcon® Wear Guard™ 300RTC	Devcon® Wear Guard™ Fine Load	Devcon® Wear Guard™ High Load	Devcon® Wear Guard™ High Temp	Devcon® Tile Adhesive
Color	Blue	Grey	Grey	Grey	White
Mix ratio by weight/volume (resin:hardener)	2:1 / 2:1	2:1 / 2:1	2:1 / 2:1	13.7:1 / 6:1	1.1:1 / 1:1
Mixed viscosity (cP)	Putty	Putty	Putty	Putty	Putty
Functional cure (hours)	8-10	3	3	Heat Cured	8-12
Pot life (minutes @ 75°F)	50-70	30	30	120	240
Specific volume (inches <sup>3</sup> /pound)	12.9	12.6	12.9	14.3	19.2
Coverage per pound (inches <sup>2</sup> @ 1/4" thickness)	50	50	50	60	76.8
Cured hardness (ASTM D2240) (Shore D)	85	87	87	87	81
Cured shrinkage (ASTM D2566) (inch/inch)	0.001	0.0006	0.0006	0.0010	0.0010
Adhesive tensile shear (ASTM D1002) (psi)	600	1,375	1,474	2,300	1,945
Compressive strength (ASTM D695) (psi)	12,500	11,000	11,000	13,200	9,620
Flexural strength (ASTM D790) (psi)	5,000	7,190	7,140	8,220	5,480
Coefficient of thermal expansion (ASTM D696)[(in)/(in x °F)] x 10 <sup>-6</sup>	43.6	34	29	27	14
Dielectric constant (ASTM D150) (1 kHz)	3.3	46.0	41.0	38.0	46.0
Maximum continuous dry service temperature (°F)	300	300	300	450	200
Maximum continuous wet service temperature (°F)	300	140	140	150	150

NOTES: <sup>2</sup> Three-part system, beads separate

Chemical Resistance	Devcon® Wear Guard™ 300RTC	Devcon® Wear Guard™ Fine Load	Devcon® Wear Guard™ High Load	Devcon® Wear Guard™ High Temp	Devcon® Tile Adhesive
ACIDS	●	●	●	●	●
Acetic 10%	○	○	○	○	○
Hydrochloric 10%	○	○	○	○	○
Sulfuric 10%	○	○	○	○	○
ALCOHOLS	○	○	○	○	○
Methanol	○	○	○	○	○
Isopropanol	○	○	○	○	○
KETONES	○	○	○	○	○
Acetone	○	○	○	○	○
Methyl ethyl ketone	○	○	○	○	○
ALKALIS	●	●	●	●	●
Ammonium hydroxide 20%	●	●	●	●	●
Sodium hydroxide 10%	●	●	●	●	●
HYDROCARBONS	●	●	●	●	○
Gasoline (unleaded)	●	●	●	●	○
Mineral spirits	●	●	●	●	○
CHLORINATED HYDROCARBONS	○	○	○	○	○
1-1-1 Trichloroethane	○	○	○	○	○
SALTS	○	○	○	○	○
Sodium chloride	○	○	○	○	○
Trisodium phosphate	○	○	○	○	○

Key: ● Excellent ○ Very Good ○ Fair ○ Poor

## DEVCON® R-FLEX®

Devcon® R-Flex® is a self-leveling urethane kit for repairing holes, tears, gouges, and now metal splice clips, in SBR heavy weight conveyor belts. With greater flexibility, Devcon® R-Flex® can now be used to coat directly over metal clips to extend the life of previous repairs made. The kit includes: resin, curing agent, surface conditioner, mix bucket (4 lb size only), scrub pad, gloves, paper towels, and plastic spatula. The coverage for 15550 4 lb kit is 440 sq inches at 1/4" thickness and for 15565 1.5 lb kit is 110 sq. inches at 1/4" thickness. Devcon® Surface Conditioner is a 2-part system that enhances the adhesion of Devcon® R-Flex® to SBR rubber. The fluorescence in surface conditioner allows for visual inspection to ensure greatest adhesion to the belt. It's easy to see in dark locations or bright sun light where the surface conditioner has been applied.

### Key Product Features:

- Self-leveling liquid while applying then becomes a non-sag gel in 4 minutes
- Rapid initial adhesion
- Back in service in 90 minutes
- Easy to mix and pour
- Available in two kit sizes for large and small repairs

### Devcon® R-Flex®

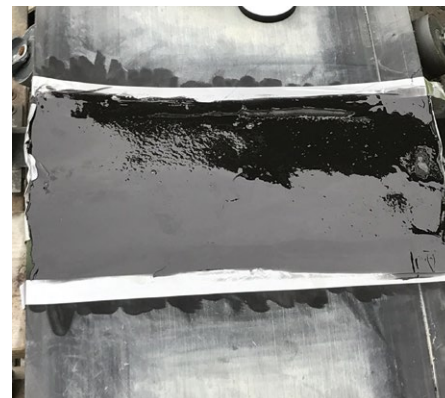
The newest belt repair product in the market place. A self-leveling urethane kit for repairing holes and tears in conveyor belts. Also used to cover and protect clips/pins from scrapers.

- Functional cure in 90 minutes
- High adhesion with surface pull of the SBR rubber
- Kit includes surface conditioner

Item #	Size	Items/Case
15550	4 lb	1
15565	1.5 lb	4



Before Metal Clips Splice Repair



After Metal Clips Splice Repair



Before Repair: Large tear in belt due to rocks getting caught under the scraper blade.



After Repair: Belt flap cut down, Devcon Surface Conditioner and R-Flex applied to belt.

## BELTING & RUBBER REPAIR

Flexible urethane technologies for repairing worn or damaged SBR conveyor belts, rubber lined equipment such as pipes and tanks in mines, quarries, and coal-fired power plants. These products are in a non-sag putty for patching and repairing linings along with self-leveling thixotropic versions that create a smooth surface for repairing conveyor belts.

### Devcon® Flexane® 80 Putty

Trowelable urethane for repairing and lining process equipment exposed to wear, abrasion, vibration or expansion/contraction.

- Service temperatures to 180°F in dry environments and 120°F in wet environments
- Bonds to metal, concrete, rubber, wood, and fiberglass surfaces

Item #	Size	Items/Case
15820	1 lb	6
15850	4 lb	1

### Devcon® Flexane® Brushable

High-performance brushable urethane for protection against abrasion and impact.

- Excellent for repairing/coating rubber-lined pumps, tanks and valves
- Applies in thicknesses of 50 mils in one application



Item #	Size	Items/Case
15350	1 lb	6

### Devcon® Flexane® High Performance Putty

Trowelable lining for maximum protection against abrasion, gouging and impact.

- Cures to a tough (tear strength 400 pli), resilient rubber compound (Hardness 78 Shore A)
- Bonds to metal, rubber, wood, fiberglass, and concrete

Item #	Size	Items/Case
15330	1 lb	6

### Devcon® Flexane® Fast Cure Putty

Black Flexane® Fast Cure thickens to a putty in seconds providing superior flexibility, elongation and adhesion to rubber.

- Light service duty in 3 hours
- Thixotropic, creamy formula which thickens in time

Item #	Size	Items/Case
15049	400 ml Cartridge	4

### Devcon® Flexane® 80 Liquid

Medium-viscosity (10,000 cP) urethane fills voids completely and faithfully reproduces mold detail.

- Cures to semi-rigid rubber (Shore A 87)
- Cures at room temperature to a semi-rigid rubber material

Item #	Size	Items/Case
15800	1 lb	6
15810	10 lb	1

### Devcon® Flexane® FC Liquid

A convenient, time-saving method of filling expansion joints and repairing rubber.

- 8-minute working time
- No-mess dispensing with fast, easy, 400 ml reusable cartridges

Item #	Size	Items/Case
15050	400 ml Cartridge	4

### Devcon® Flexane® 94 Liquid

Low-viscosity (6,000 cP) urethane fills voids completely and faithfully reproduces mold detail.

- Similar to Flexane® 80 Liquid, but cures to (Shore A 97)
- Requires only a five hour demolding time

Item #	Size	Items/Case
15250	1 lb	6
15260	10 lb	1

### Devcon® Flex-Add™

Used with Flexane® 80 Liquid to produce a more flexible urethane.

- Creates a lower durometer castable urethane
- Can match existing hardness of rubber

Item #	Size	Items/Case
15940	8 oz	6

### Devcon® Liquid Release Agent

Silicone release agent prevents Devcon's epoxy and urethane compounds from sticking to patterns or mold surfaces.

- Produces a high gloss finish
- Facilitates the accurate duplication of intricate details

Item #	Size	Items/Case
19600	1 pt	6

### Devcon® Flexane® Primer

Required for maximum adhesion of Flexane® products. FL-10 Primer for all metals. FL-20 Primer for rubber, wood, fiberglass and concrete. Ensures ultimate peel strength (greater than 80 psi).

Item #	Primer	Size	Items/Case
15980	FL-10	4 oz	6
15985	FL-20	4 oz	6

Physical Properties	Devcon® R-Flex®	Devcon® Flexane® 80 Putty	Devcon® Flexane® Brushable	Devcon® Flexane® High Performance Putty	Devcon® Flexane® Fast Cure Putty	Devcon® Flexane® Fast Cure Liquid	Devcon® Flexane® 80 Liquid	Devcon® Flexane® 94 Liquid
Color	Black	Black	Black	Black	Black	Grey	Black	Black
Mix ratio by weight (resin:hardener)	88:12	72:28	80:20	94:6	80:20	80:20	77:23	69:31
Mixed viscosity (cP)	Putty	Putty	40,000	Putty	Putty	5,800	10,000	6,000
Pot life (minutes @ 75°F)	4	20	45	10	8	8	30	10
Specific volume (inches <sup>3</sup> /pound)	27.4	23.5	26.0	23.5	23.5	26.5	26.5	26.5
Coverage per pound (inches <sup>2</sup> @ 1/4" thickness)	110	94	104	94	94	106	106	106
Functional cure (hours)	1 1/2	12	18	16	3	2	16	16
Demolding time (hours)	N/A	N/A	N/A	N/A	N/A	N/A	10	5
Cured hardness (ASTM D2240) (Shore A)	87	87	86	78	88	94	87	97
Cured shrinkage (ASTM D2566) (inch/inch)	NA	0.0014	0.232	0.12 <sup>2</sup>	0.0014	0.0018	0.0018	0.0014
Tensile strength (ASTM D412) (psi)	1,462	1,700	3,500	4,500	2,400	3,300	2,100	2,800
Tear resistance (ASTM D624) (pli)	375	300	400	400	275	430	350	415
Abrasion resistance weight loss <sup>1</sup> (mg)	270	280	90	140	220	330	285	330
Maximum elongation (ASTM D412) (%)	420	300	600	600	500	450	650	500
Dielectric strength (ASTM D149) (volts/mil)	350	350	340	350	350	350	350	350
Maximum continuous dry service temperature (°F)	180	180	180	180	180	180	180	180
Maximum continuous wet service temperature (°F)	120	120	120	120	120	120	120	120

NOTES: <sup>1</sup> Taber H-18 wheel (mg/1,000 revolutions @ 1,000 gram load) <sup>2</sup> Due to solvent loss

Chemical Resistance	Devcon® R-Flex®	Devcon® Flexane® 80 Putty	Devcon® Flexane® Brushable	Devcon® Flexane® High Performance Putty	Devcon® Flexane® Fast Cure Putty	Devcon® Flexane® Fast Cure Liquid	Devcon® Flexane® 80 Liquid	Devcon® Flexane® 94 Liquid
<b>ACIDS</b>								
Acetic 10%	○	○	○	○	○	○	○	○
Hydrochloric 10%	○	○	○	○	○	○	○	○
Sulfuric 10%	○	○	○	○	○	○	○	○
Sulfuric 50%	○	○	○	○	○	○	○	○
Phosphoric 10%	○	○	○	○	○	○	○	○
<b>ALCOHOLS</b>								
Methanol	○	○	○	○	○	○	○	○
Isopropanol	○	○	○	○	○	○	○	○
<b>KETONES</b>								
Acetone	○	○	○	○	○	○	○	○
Methyl ethyl ketone	○	○	○	○	○	○	○	○
<b>ALKALIS</b>								
Ammonium hydroxide 20%	○	○	○	○	○	○	○	○
Sodium hydroxide 10%	○	○	○	○	○	○	○	○
<b>HYDROCARBONS</b>								
Gasoline (unleaded)	○	○	○	○	○	○	○	○
Mineral spirits	○	○	○	○	○	○	○	○
<b>SALTS</b>								
Sodium chloride	○	○	○	○	○	○	○	○
Trisodium phosphate	○	○	○	○	○	○	○	○
Aluminum sulfate 10%	○	○	○	○	○	○	○	○
Sodium carbonate 10%	○	○	○	○	○	○	○	○

Key: ● Excellent ● Very Good ○ Fair ○ Poor

## CORROSION REPAIR COMPOUNDS

Ceramic filled epoxy technology used to make permanent repairs to pumps, shafts, pipes, and tanks where a corrosion-resistant polymer is needed to protect all metals against corrosion and erosion in slurry applications. These products apply easily with a brush or trowel.

### Devcon® Titanium Putty

High-performance, non-rusting titanium-reinforced epoxy putty for making repairs that can be precision machined.

- Withstands heavy loads in harsh chemical environments
- High compressive strength



Item #	Size	Items/Case
10760	1 lb	6
10770	2 lb	6

### Devcon® Brushable Ceramic

When applied in a 15-20 mil coating, this low-viscosity, alumina-filled, brushable epoxy compound produces a smooth, protective barrier against wear, abrasion, corrosion, erosion and chemical attack.

- Temperature range up to 350°F
- Brushable Ceramic white is NSF 61 Certified



Item #	Size	Items/Case
11760	2 lb (Red)	6
11765	2 lb (Blue)	6
11767	12 lb (Blue)	1
11770	2 lb (White)	6

### Devcon® EZ-Spray Brushable Ceramic

EZ-Spray cartridge system allows fast, easy spray application of chemical-resistant ceramic coating, eliminating premixing, open time concerns, and product waste. The high-build coating (18-22mils/coat) reduces the coats required and application time.

- Temperature range up to 350°F
- Brushable Ceramic white is NSF 61 Certified

Item #	Size	Items/Case
11781	1000 ml Blue	6

### Devcon® Ceramic Repair Putty

Trowelable, alumina-filled epoxy compound for rebuilding, smoothing and protecting processing equipment exposed to corrosion, erosion, cavitation, chemicals and acids.

- Temperature range up to 350°F
- Excellent for filling voids and rebuilding metal castings



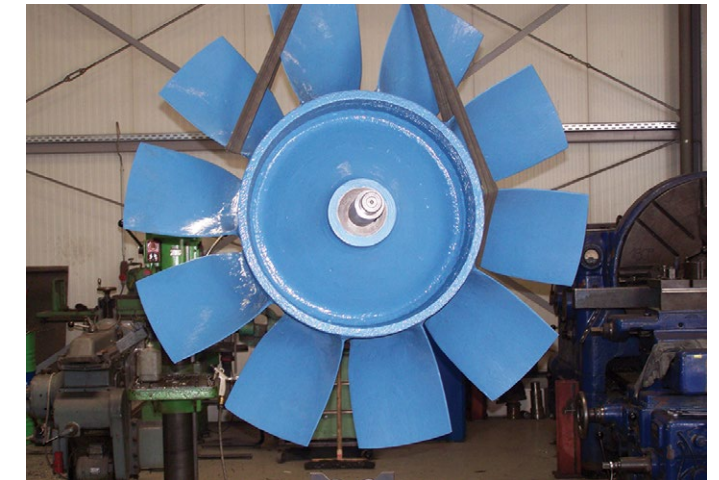
Item #	Size	Items/Case
11700	3 lb	6

### Devcon® Ceramic Repair Compound

Trowelable, alumina-filled epoxy compound with a 45-minute pot life and larger kit size for bigger jobs of rebuilding, smoothing and protecting processing equipment.

- Temperature range up to 350°F
- Excellent for filling voids and rebuilding metal castings

Item #	Size	Items/Case
11730	32 lb	1



Physical Properties	Devcon® Titanium Putty	Devcon® Brushable Ceramic Red, Blue	Devcon® Brushable Ceramic White	Devcon® Ceramic Repair Putty	Devcon® Ceramic Repair Compound	Devcon® EZ-Spray Ceramic
Color	Grey	Red, Blue	White	Dark Blue	Dark Blue	Blue
Mix ratio by weight/volume (resin:hardener)	4.3:1 / 3:1	5.6:1 / 3.4:1	8.5:1 / 5.6:1	7:1 / 4.3:1	4.7:1 / 3.3:1	5.0:1 / 3:1
Mixed viscosity (cP)	Putty	32,000	40,000	Putty	Putty	30,000
Functional cure (hours)	16	16	16	16	16	16
Pot life (minutes @ 75°F)	21	21	21	25	45	40
Specific volume (inches <sup>3</sup> /pound)	11.7	16.5	16.5	16.4	17.9	17.1
Coverage per pound (inches <sup>2</sup> @ 1/4" thickness)	47	7.6 <sup>1</sup>	7.6 <sup>1</sup>	66	72	7.9 <sup>1</sup>
Cured hardness (ASTM D2240) (Shore D)	87	86	84	86	86	85
Cured shrinkage (ASTM D2566) (inch/inch)	0.0010	0.0020	0.0020	0.0022	0.0022	0.0020
Adhesive tensile shear (ASTM D1002) (psi)	2,000	2,000	2,000	2,000	2,231	2,000
Compressive strength (ASTM D695) (psi)	15,200	13,200	13,200	12,700	10,240	13,700
Flexural strength (ASTM D790) (psi)	7,700	8,000	8,000	6,475	5,870	8,000
Modulus of elasticity (ASTM D638) (psi x 10 <sup>5</sup> )	9.5	8.0	8.0	8.1	8.1	8.0
Coefficient of thermal expansion (ASTM D696) [(in)/(in x °F)] x 10 <sup>-6</sup>	22	27.5	27.5	23.8	24.2	25.6
Thermal conductivity (ASTM C177) [(cal x cm)/(sec x cm <sup>2</sup> x °C)] x 10 <sup>-3</sup>	1.95	19	19	1.88	1.88	19
Dielectric constant (ASTM D150) (1 kHz)	44.8	3.87	3.87	4.1	4.1	3.87
Dielectric strength (ASTM D149) (volts/mil)	56	382	382	370	350	382
Maximum continuous dry service temperature (°F)	350	350	350	350	350	350
Maximum continuous wet service temperature (°F)	150	150	150	150	150	150

NOTES: <sup>1</sup> Coverage (feet<sup>2</sup> @ 15 mils)

Chemical Resistance	Devcon® Titanium Putty	Devcon® Brushable Ceramic Red, Blue	Devcon® Brushable Ceramic White	Devcon® Ceramic Repair Putty	Devcon® Ceramic Repair Compound	Devcon® EZ-Spray Ceramic
<b>ACIDS</b>						
Acetic 10%	⊙	⊙	⊙	⊙	⊙	⊙
Hydrochloric 10%	●	●	●	●	●	●
Sulfuric 10%	◐	◐	◐	◐	◐	◐
<b>ALCOHOLS</b>						
Methanol	●	●	●	●	●	●
Isopropanol	●	●	●	●	●	●
<b>KETONES</b>						
Acetone	⊙	⊙	⊙	⊙	⊙	⊙
Methyl ethyl ketone	⊙	⊙	⊙	⊙	⊙	⊙
<b>ALKALIS</b>						
Ammonium hydroxide 20%	●	●	●	●	●	●
Sodium hydroxide 10%	●	●	●	●	●	●
<b>HYDROCARBONS</b>						
Gasoline (unleaded)	●	◐	◐	●	●	●
Mineral spirits	●	●	●	●	●	●
<b>CHLORINATED HYDROCARBONS</b>						
1-1-1 Trichloroethane	●	●	●	●	●	●
<b>SALTS</b>						
Sodium chloride	●	●	●	●	●	●
Trisodium phosphate	●	●	●	●	●	●

Key: ● Excellent ● Very Good ◐ Fair ⊙ Poor

## METAL REPAIR EPOXIES

Metal-filled epoxy technology that allow for fast economical permanent repairs to power plant and mining equipment. They can be machined, tapped and drilled, and corrosion resistant to harsh chemicals. These products are available in pourable versions that can be used to provide accurate detail reproductions for short run prototype mold patterns, holding fixtures and forming dies.



### Devcon® Plastic Steel® Putty (A)

The original metal-filled epoxy putty, it is ideal for repairing areas where welding or brazing would be impractical.

- Can be drilled, tapped and machined.
- Conforms to the requirements of MIL-PRF-24176C, Type I



Item #	Size	Items/Case
10110	1 lb	6
10120	4 lb	6

### Devcon® Plastic Steel® Liquid (B)

A pourable steel-filled epoxy that provides accurate detail reproduction in making holding fixtures, light gauge forming dies and molds.

- Can be drilled, tapped and machined
- Qualifies under Federal Specification MMM-A-1754, Adhesive/Sealing



Item #	Size	Items/Case
10210	1 lb	6
10220	4 lb	6

### Devcon® Plastic Steel® 5 Minute® Putty (SF)

Fast-curing, steel-filled epoxy for emergency repairs at temperatures as low as 40°F.

- Repaired parts can be returned to service within one hour
- Mixes, applies, and cures at temperatures as low as 40°F



Item #	Size	Items/Case
10240	1 lb	6

### Devcon® Stainless Steel Putty (ST)

Stainless steel-filled epoxy putty for patching, repairing and rebuilding stainless steel surfaces as well as food processing equipment.

- Bonds to ferrous and non-ferrous metals
- NSF 61 Certified



Item #	Size	Items/Case
10270	1 lb	6

### Devcon® Aluminum Putty

Aluminum-filled epoxy putty for dependable nonrusting repairs to aluminum castings, machinery and equipment.

- Can be machined drilled or tapped using conventional metalworking tools
- Widely used in HVAC applications, it conforms to requirements of MIL-PRF-24176C, Type II



Item #	Size	Items/Case
10610	1 lb	6
10620	3 lb	6

### Devcon® Aluminum Liquid (F-2)

Aluminum-filled pourable epoxy for making molds, patterns and holding fixtures.

- It can be drilled, tapped and machined
- Hardens in just over 1 hour; cures in 16 hours
- Qualifies under Federal Specification MMM-A-1754, Adhesive/Sealing



Item #	Size	Items/Case
10710	1 lb	6
10720	3 lb	6

### Devcon® Wet Surface Repair Putty (UW)

High-performance technology for repairing, patching, and rebuilding equipment in habitually wet environments, including under water.

- Non-rusting; easy-to-mix and apply
- Eliminates the need for substrate to be thoroughly dry before repair

Item #	Size	Items/Case
11801	1 lb	10



Physical Properties	Devcon® Plastic Steel® Putty (A)	Devcon® Plastic Steel® Liquid (B)	Devcon® Plastic Steel® 5 Minute® Putty (SF)	Devcon® Stainless Steel Putty (ST)	Devcon® Aluminum Putty (F)	Devcon® Aluminum Liquid (F-2)	Devcon® Wet surface Repair Putty (UW)
<b>Color</b>	Dark Grey	Dark Grey	Dark Grey	Grey	Aluminum	Aluminum	Grey
<b>Mix ratio by weight/volume (resin:hardener)</b>	9:1 / 2.5:1	9:1 / 3:1	1.7:1 / 1:1	11:1 / 3.75:1	9:1 / 4:1	9:1 / 5:1	1.4:1 / 1:1
<b>Mixed viscosity (cP)</b>	Putty	15 / 25,000	Putty	Putty	Putty	15 / 25,000	Putty
<b>Functional cure (hours)</b>	16	16	1	16	16	16	24
<b>Pot life (minutes @ 75°F)</b>	45	45	5	58	60	75	45
<b>Specific volume (inches<sup>3</sup>/pound)</b>	11.9	13.1	12.2	12.4	17.5	17.5	17.0
<b>Coverage per pound (inches<sup>2</sup> @ 1/4" thickness)</b>	48	52	49	50	70	70	68
<b>Cured hardness (ASTM D2240) (Shore D)</b>	85	85	85	85	85	85	82
<b>Cured shrinkage (ASTM D2566) (inch/inch)</b>	0.0006	0.0006	0.0006	0.0010	0.0008	0.0009	0.0020
<b>Adhesive tensile shear (ASTM D1002) (psi)</b>	2,800	2,800	2,026	2,385	2,600	2,700	2,685
<b>Compressive strength (ASTM D695) (psi)</b>	8,260	10,200	10,400	8,400	8,420	9,820	5,625
<b>Flexural strength (ASTM D790) (psi)</b>	5,600	7,480	7,680	5,280	6,760	7,180	4,990
<b>Modulus of elasticity (ASTM D638) (psi x 10<sup>5</sup>)</b>	8.5	8.5	7.5	8.0	8.0	7.5	7.5
<b>Coefficient of thermal expansion (ASTM D696) [(in)/(in x °F)] x 10<sup>-6</sup></b>	48	38	34	34	29	50	18
<b>Thermal conductivity (ASTM C177) [(cal x cm)/(sec x cm<sup>2</sup> x °C)] x 10<sup>-3</sup></b>	1.37	1.39	2.65	1.23	1.73	1.58	1.41
<b>Dielectric constant (ASTM D150) (1 kHz)</b>	67.5	67.5	35.0	75.0	21.4	8.6	8.6
<b>Dielectric strength (ASTM D149) (volts/mil)</b>	30	30	30	30	100	100	150
<b>Maximum continuous dry service temperature (°F)</b>	250	250	200	250	250	250	250
<b>Maximum continuous wet service temperature (°F)</b>	120	120	N/A	120	120	120	120

Chemical Resistance	Devcon® Plastic Steel® Putty (A)	Devcon® Plastic Steel® Liquid (B)	Devcon® Plastic Steel® 5 Minute® Putty (SF)	Devcon® Stainless Steel Putty (ST)	Devcon® Aluminum Putty (F)	Devcon® Aluminum Liquid (F-2)	Devcon® Wet surface Repair Putty (UW)
<b>ACIDS</b>							
Acetic 10%	⊙	⊙	⊙	⊙	⊙	⊙	⊙
Hydrochloric 10%	⊙	⊙	⊙	⊙	⊙	⊙	⊙
Sulfuric 10%	⊙	⊙	⊙	⊙	⊙	⊙	⊙
<b>ALCOHOLS</b>							
Methanol	⊙	⊙	⊙	⊙	⊙	⊙	⊙
Isopropanol	⊙	⊙	⊙	⊙	⊙	⊙	⊙
<b>KETONES</b>							
Acetone	⊙	⊙	⊙	⊙	⊙	⊙	⊙
Methyl ethyl ketone	⊙	⊙	⊙	⊙	⊙	⊙	⊙
<b>ALKALIS</b>							
Ammonium hydroxide 20%	⊙	⊙	⊙	⊙	⊙	⊙	⊙
Sodium hydroxide 10%	⊙	⊙	⊙	⊙	⊙	⊙	⊙
<b>HYDROCARBONS</b>							
Gasoline (unleaded)	⊙	⊙	⊙	⊙	⊙	⊙	⊙
Mineral spirits	⊙	⊙	⊙	⊙	⊙	⊙	⊙
<b>CHLORINATED HYDROCARBONS</b>							
1-1-1 Trichloroethane	⊙	⊙	⊙	⊙	⊙	⊙	⊙
<b>SALTS</b>							
Sodium chloride	⊙	⊙	⊙	⊙	⊙	⊙	⊙
Trisodium phosphate	⊙	⊙	⊙	⊙	⊙	⊙	⊙

Key: ● Excellent ○ Very Good ⊙ Fair ⊙ Poor

## METAL REPAIR EPOXIES

Metal-filled epoxy technology that allow for fast economical permanent repairs to power plant and mining equipment. They can be machined, tapped and drilled, and corrosion resistant to harsh chemicals. These products are available in pourable versions that can be used to provide accurate detail reproductions for short run prototype mold patterns, holding fixtures and forming dies.

### Devcon® Bronze Putty

Bronze-filled epoxy putty for repairing bronze and brass bushings, shafts, castings and equipment parts.

- Repairs and rebuilds areas where brazing would be undesirable or impossible
- Bonds securely to bronze alloys, brass, copper and ferrous metals



Item #	Size	Items/Case
10260	1 lb	6

### Devcon® Wear Resistant Putty (WR-2)

Smooth, non-rusting, all-purpose epoxy putty for repairs requiring low-friction finishes, such as machine lathe beds.

- Bonds to steel, iron, aluminum, ceramic, concrete, brass, and some plastics
- Contains wear-resistant fillers for low friction applications

Item #	Size	Items/Case
11410	1 lb	6
11420	3 lb	6

### Devcon® FasMetal™

High-performance, alumina-filled epoxy for making fast, dependable emergency repairs to leaks in pipes.

- Hardens in 5 minutes
- Economical and convenient



Item #	Size	Items/Case
10780	.75 lb	6

### Devcon® Zip Patch™

Easy-to-use adhesive patch kit for permanent waterproof repairs to pipes, tanks and drums. Hardens in minutes at room temperature.

Item #	Size	Items/Case
11500	4" x 9" Patch	6

### Devcon® Liquid Release Agent

Silicone release agent prevents Devcon's epoxy and urethane compounds from sticking to patterns or mold surfaces.

- Produces a high gloss finish
- Facilitates the accurate duplication of intricate details

Item #	Size	Items/Case
19600	1 pt	6



### Devcon® Cleaner Blend 300

Safe, multi-purpose, non-trichloroethane based degreaser for removing heavy grease and oil from metal surfaces.

- Needs no rinsing; leaves no residue
- Evaporates fast

Item #	Size	Items/Case
19510	1 pt	6



Physical Properties	Devcon® Bronze Putty (BR)	Devcon® Wear Resistant Putty (WR-2)	Devcon® FasMetal™	Devcon® Zip Patch™
Color	Bronze	Dark Grey	Grey	Brown
Mix ratio by weight / volume (resin:hardener)	9:1 / 3:1	9:1 / 4:1	1.07:1 / 1:1	N / A
Mixed viscosity (cP)	Putty	Putty	Putty	17,000
Functional cure (hours)	16	16	1	1
Pot life (minutes @ 75°F)	35	45	4	5
Specific volume (inches <sup>3</sup> /pound)	12.4	13.9	17.2	N / A
Coverage per pound (inches <sup>2</sup> @ 1/4" thickness)	50	56	69	N / A
Cured hardness (ASTM D2240) (Shore D)	85	85	90	70
Cured shrinkage (ASTM D2566) (inch/inch)	0.0010	0.0005	0.0093	0.0010
Adhesive tensile shear (ASTM D1002) (psi)	2,680	2,200	2,000	2,400
Compressive strength (ASTM D695) (psi)	8,540	9,800	12,700	N / A
Flexural strength (ASTM D790) (psi)	6,180	6,500	7,700	19,000
Modulus of elasticity (ASTM D638) (psi x 10 <sup>5</sup> )	8.0	7.5	8.5	2.9
Coefficient of thermal expansion (ASTM D696) [(in)/(in x °F)] x 10 <sup>-6</sup>	33	32	32	64
Thermal conductivity (ASTM C177) [(cal x cm)/(sec x cm <sup>2</sup> x °C)] x 10 <sup>-3</sup>	1.57	1.67	2.04	1.71
Dielectric constant (ASTM D150) (1 kHz)	75.0	6.3	18.6	43.5
Dielectric strength (ASTM D149) (volts/mil)	25	400	370	250
Maximum continuous dry service temperature (°F)	250	250	250	200
Maximum continuous wet service temperature (°F)	120	120	120	N/A

Chemical Resistance	Devcon® Bronze Putty (BR)	Devcon® Wear Resistant Putty (WR-2)	Devcon® FasMetal™	Devcon® Zip Patch™
<b>ACIDS</b>				
Acetic 10%	●	●	●	●
Hydrochloric 10%	●	●	●	●
Sulfuric 10%	●	●	●	●
<b>ALCOHOLS</b>				
Methanol	○	○	○	○
Isopropanol	○	○	○	○
<b>KETONES</b>				
Acetone	○	○	○	○
Methyl ethyl ketone	○	○	○	○
<b>ALKALIS</b>				
Ammonium hydroxide 20%	●	●	●	○
Sodium hydroxide 10%	●	●	●	○
<b>HYDROCARBONS</b>				
Gasoline (unleaded)	●	●	●	○
Mineral spirits	●	●	●	○
<b>CHLORINATED HYDROCARBONS</b>				
1-1-1 Trichloroethane	○	○	○	○
<b>SALTS</b>				
Sodium chloride	●	●	○	○
Trisodium phosphate	●	●	○	○

Key: ● Excellent ● Very Good ○ Fair ○ Poor

## FLOOR REPAIR/PATCHING COMPOUNDS

100% solids epoxy-based polymers for patching, rebuilding and resurfacing concrete, brick, stucco and block.

### Devcon® Floor Patch™

All-purpose, easy-to-mix and apply concrete patching compound. With a compressive strength of 8,000 psi, Floor Patch™, provides three times the typical strength of concrete.



Item #	Size	Items/Case
13100	10 lb	1
13120	40 lb	1

### Devcon® Floor Patch™ Resurfacer

A three-part filled epoxy system for concrete floors where aggregate is exposed. This self-leveling product mixes easily, is ideal for repairing damaged concrete and rebuilding to depths of 1/4" to 1".

Item #	Size	Items/Case
13130	41 lb	1

### Devcon® Ultra Quartz™

Heavy-duty, trowelable premium floor patching system with excellent chemical resistance. System includes a primer for superior adhesion to cured concrete or other surfaces.

Item #	Size	Items/Case
13550	35 lb	1



## FLOOR COATINGS

Epoxy floor coatings for protecting plant floors, platforms, walkways and ramps against acids, alkalis and solvents.

### Devcon® Epoxy Coat™ 7000 Non-VOC

100% solids self-leveling coating for smooth or mildly spalled concrete. Produces an attractive, durable, chemical-resistant finish. Silica aggregate can be added to rebuild floors by 1/16" or more.



Item #	Size	Items/Case
12710	2 gal	1

### Devcon® Epoxy Coat™ 7000 AR (Acid Resistant)

Novolac non-VOC epoxy coating provides superior resistance to concentrated acids (including 98% sulfuric) and chemicals. Excellent adhesion to concrete surfaces. Ideal for use around chemical storage tanks, dike walls and containment areas.

Item #	Size	Items/Case
12750	2 gal	1

### Devcon® Epoxy Concrete Sealer

Self-leveling, non-VOC clear epoxy sealer can be used as a primer on damp surfaces. Easily applied by brush, roller or squeegee at temperatures as low as 40°F. Outstanding resistance to chemicals, acids, alkalis and hydrocarbons.

Item #	Size	Items/Case
12560	2 gal	1





Physical Properties	Floor Patch™	Ultra Quartz™	Floor Patch™ Resurfacer	Epoxy Concrete Sealer	Epoxy Coat™ 7000 Non VOC	Epoxy Coat™ 7000 AR
Coverage per unit (feet² @ thickness)	18 @ 0.25" / 40 lb unit	13 @ 0.25" / 35 lb unit	568 inches 3/ 41 lb unit	400 @ 8 mils	400 @ 8 mils	200 @ 16 mils
Mixed viscosity (cP)	Putty	Putty	5,000	2,000	2,000	3,600
Minimum application temperature (°F)	60 ~ 90	60 ~ 90	50 ~ 90	40 ~ 90	55 ~ 90	60 ~ 90
Pot life (minutes @ 75°F)	45	60	40	60	55	36
Functional cure (hours)	16	16	24	24	24	24
Cured hardness (ASTM D2240) (Shore D)	85	95	85	85	85	85
Maximum continuous service temperature (°F)	250	250	180	180	180	200
% Solids	100	100	100	100	100	100
Chemical Resistance	Floor Patch™	Ultra Quartz™	Floor Patch™ Resurfacer	Epoxy Concrete Sealer	Epoxy Coat™ 7000 Non VOC	Epoxy Coat™ 7000 AR
<b>ACIDS</b>						
Acetic 10%	⊙	⊙	⊙	⊙	⊙	⊙
Hydrochloric 10%	⊙	●	⊙	⊙	⊙	●
Sulfuric 10%	⊙	●	⊙	⊙	⊙	●
<b>ALCOHOLS</b>						
Methanol	⊙	●	⊙	⊙	⊙	⊙
Isopropanol	⊙	○	⊙	⊙	⊙	⊙
<b>KETONES</b>						
Acetone	⊙	⊙	⊙	⊙	⊙	⊙
Methyl ethyl ketone	⊙	⊙	⊙	⊙	⊙	⊙
<b>ALKALIS</b>						
Ammonium hydroxide 20%	⊙	●	⊙	●	●	●
Sodium hydroxide 10%	⊙	●	⊙	●	●	●
<b>HYDROCARBONS</b>						
Gasoline (unleaded)	⊙	●	⊙	⊙	⊙	●
Mineral spirits	⊙	●	⊙	⊙	⊙	●
<b>CHLORINATED HYDROCARBONS</b>						
1-1-1 Trichloroethane	●	●	●	●	●	●
<b>SALTS</b>						
Sodium chloride	●	●	⊙	⊙	⊙	●
Trisodium phosphate	●	●	⊙	⊙	⊙	●

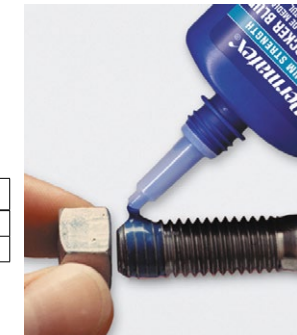
Key: ● Excellent ○ Very Good ○ Fair ○ Poor

## THREADLOCKERS

### Permatex® Medium Strength Threadlocker BLUE

All-purpose, medium strength threadlocker. Ideal for all nut and bolt applications 1/4" to 3/4" (6mm to 20 mm). Eliminates need for stocking expensive lock nuts and lock washers. Locks and seals while preventing parts from loosening due to vibration. Protects threads from corrosion. Removable with hand tools for easy disassembly. Mil-Spec (S-46163A), Type II, Grade N.

Item #	Size
24210	10 ml Bottle, Carded
24250	50 ml Bottle



### Permatex® Surface Insensitive Threadlocker BLUE

Medium/High strength threadlocker for general-purpose applications. Especially well-suited for 1/4" to 3/4" (6 mm to 20 mm) fasteners that have a slight oil film. Prevents vibration loosening.

Item #	Size
24325	250 ml Bottle

### Permatex® High Strength Removable Orange Threadlocker

Permatex High Strength Removable Orange Threadlocker is a one-of-a-kind anaerobic formula that combines the strength of Permatex Red Threadlocker with the removability of Permatex Blue Threadlocker. Permatex Orange Threadlocker provides high strength for heavy-duty applications, but unlike Red Threadlocker, can be removed with hand tools and does not require heating to achieve removal. With 3X the strength of Blue Threadlocker, Permatex Orange Threadlocker locks, seals and ensures that parts do not loosen over time. Ideal for high vibration applications.

Item #	Size
25210	10 ml tube

### Permatex® Permanent Strength Threadlocker RED

A permanent, high strength threadlocker that is applied to fasteners 3/8" to 1" (10 mm to 25 mm) in size before assembly. Designed for securing parts that must withstand heavy shock, vibration or extreme chemical or environmental conditions. Localized heat and hand tools are required to separate parts. Mil-Spec (S-46163A), Type II, Grade O.

Item #	Size
26210	10 ml Bottle, Carded
26250	50 ml Bottle



### Permatex® High Strength Threadlocker RED

High strength threadlocker for heavy-duty applications 3/8" to 1" (10 mm to 25 mm). Especially well suited for permanently locking studs. Locks against vibration loosening. Removable with heat and hand tools. Mil-Spec (S-46163A), Type I, Grade K.

Item #	Size
27110	10 ml Bottle, Carded
27150	50 ml Bottle

### Permatex® GEL TWIST™

Permatex® Threadlocker Gels are the true innovation in thread-locking! Available in Medium Strength BLUE Gel and High Strength RED Gel, the unique Permatex® GEL TWIST™ applicators leave the threadlocker where you want it...on the part! No more liquid drips or solid stick globs to deal with. No more mess to clean or costly waste to worry about. Permatex® Threadlocker Gels eliminate these hassles while still providing "liquid quality" application reliability.

### Permatex® Medium Strength Threadlocker BLUE Gel

An all-purpose, medium strength blue threadlocker gel that reliably secures all nut and bolt applications 1/4" to 1" (6 mm to 25 mm). Locks and seals while preventing parts from loosening due to vibration. Protects threads from corrosion. Removable with hand tools for easy disassembly.

Item #	Size
24010	10 g GEL TWIST™ Applicator, Carded

### Permatex® High Strength Threadlocker RED Gel

A high strength threadlocker red gel for heavy-duty applications. Ideal for reliably securing all permanent nut and bolt applications 3/8" to 1" (10 mm to 25 mm) and greater. Locks and seals while preventing parts from loosening due to vibration. Protects threads from corrosion. Requires heat or special tools for removal.

Item #	Size
27010	10 g GEL TWIST™ Applicator, Carded

(AVAILABLE IN U.S. ONLY) For Canada, contact Permatex Canada (800-924-6994 or 905-693-8900)

## THREAD SEALANTS

Permatex® Thread Sealants seal and secure metal pipes and fittings. By filling the space between threaded metal parts, Thread Sealants prevent leakage caused by vibration loosening, tape shredding, solvent evaporation, damaged threads and temperature cycling. Designed for low and high-pressure applications, Thread Sealants seal instantly for online low-pressure testing.



### Permatex® High Performance Thread Sealant

Formulated specifically for metal, tapered pipe thread fittings. High Performance Thread Sealant replaces tapes and pipe dopes. Cures rapidly to withstand 10,000 psi. Prevents galling and protects mated threaded areas from rust and corrosion. Contains PTFE.

Item #	Size
56521	50 ml Tube, Carded



### Permatex® Maximum Temperature Thread Sealant

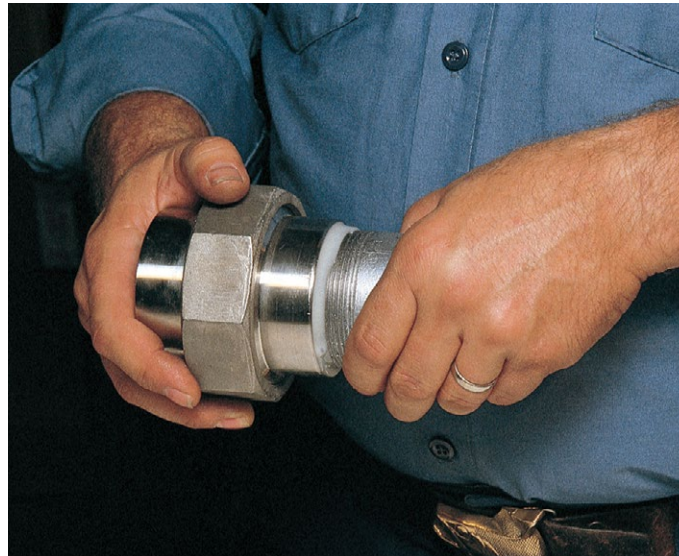
A high performance, solvent resistant sealant that locks and seals metal tapered pipe threads and fittings. Specifically formulated for aluminum, stainless steel, galvanized metal and other inert metals. Temperature range -65°F to 400°F (-54°C to 204°C). Contains PTFE.

Item #	Size
56750	50 ml Tube, Carded

### Permatex® Thread Sealant with PTFE

Economical general-purpose fitting sealant. Outperforms tapes and pipe dopes. Seals and resists pressure in air, oil, diesel fuel and hydraulic systems. Remains pliable at high and low temperatures. Temperature range -65°F to 300°F (-54°C to 149°C); resists common shop fluids.

Item #	Size	Part #
80632	4 oz Can	14H
80633	16 oz Can	14D



### Permatex® Pneumatic/Hydraulic Sealant

Designed for locking and sealing high pressure hydraulic and pneumatic systems. Contains no fillers or particles which could contaminate system fluids, fowl valves or clog fine filters and screens. Reliably cures on "as received" fasteners and controlled locking strength affords easy disassembly.

Item #	Size
54550	50 ml Bottle

### Permatex® SEAL + LOCK Thread Compound

Permatex Seal + Lock Thread Compound is a one-of-a-kind product that combines the power of a thread sealant and a thread locker into one. With this hybrid anaerobic formulation, sealed connections will not loosen and locked fittings will not leak. Formula seals to 1,000 psi, locks to 120 lbs. sq. in. and is temperature resistant between -60°F to 300°F.

Item #	Size
57535	10 ml tube

## PIPE JOINT COMPOUND

### Permatex® Pipe Joint Compound

Lubricates and seals threaded joints on water, oil and fuel lines. Temperature range -65°F to 400°F (-54°C to 204°C); resists common shop fluids.

Item #	Size	Part #
80045	16 oz Bottle	51D



## GASKET MAKERS

### Permatex® the Right Stuff® Gasket Maker

Heavy-bodied, black, elastomeric rubber provides instant seal. Superior flexibility and adhesion accommodates joint movement. Excellent oil resistance. Noncorrosive. Low odor. Low volatility. Temperature range of -75°F to 450°F (-59°C to 232°C) continuous, 500°F (260°C) intermittent. Not recommended for use on parts that will be in contact with gasoline.

Item #	Size
25224	7 oz Automatic Tube®
85224	7.5 oz PowerBead™ Can
33694	10.1 fl oz Cartridge



### Permatex® the Right Stuff® 90 Minute Gasket Maker

The Right Stuff® 90 Minute Gasket Maker Black is the only gasket maker in a tube that can return a vehicle back to service quickly – just 90 minutes curing time! This elastomeric compound outperforms precut gaskets by providing superior adhesion to flanges with maximum flexibility accommodating joint movement. Temperature range -65°F to 500°F Intermittent. The Right Stuff® 90 Minute Gasket Maker Black formula offers excellent oil resistance. It is non-corrosive with a low odor & low volatility.

Item #	Size
25228	3 oz. tube

### Permatex® Ultra Black® Gasket Maker

Fast-curing formula. Sensor-safe, low odor, non-corrosive. Fills gaps of up to 0.25" when fully cured. Meets performance specs of OE silicone gaskets. Retains high flexibility, oil resistant properties through use of a patented adhesion system. Temperature range -65°F to 400°F (-54°C to 204°C) continuous, 500°F (250°C) intermittent. Resists common fluids and excessive vibration.

Item #	Size
82180	3.0 oz Tube, Carded
85080	9.5 oz PowerBead™ Can
24105	13 oz Cartridge



### Permatex® Ultra Grey® Gasket Maker

Designed for high torque applications requiring a unique RTV gasket. Fills gaps of up to 0.25" when fully cured. Low odor, non-corrosive. Outstanding oil and coolant resistance. Temperature range -65°F to 450°F (-54°C to 232°C) continuous, 500°F (250°C) intermittent. Resists common fluids and excessive vibration.

Item #	Size
82194	3.0 oz Tube, Carded
82195	13 oz Cartridge

### Permatex® Ultra Blue® RTV Silicone Gasket Maker

Fills gaps up to 0.25" when fully cured. Sensor-safe, low odor, non-corrosive. Outstanding oil resistance and joint movement values. Eight times more flexible than cork/composite gaskets; three times more oil resistant than conventional silicones. Temperature range -65°F to 400°F (-54°C to 204°C) continuous, 500°F (250°C) intermittent. Resists common fluids and excessive vibration.

Item #	Size	Part #
81724	3.0 oz Tube, Carded	77BR
81725	13 oz Cartridge	77C



## GASKET MAKERS

### Permatex® Sensor-Safe Blue RTV Silicone Gasket Maker

The original Permatex® blue makes reliable “formed-in-place” gaskets that resist shrinking, cracking and migrating. Product cures to a strong, flexible rubber that seals flanges against leakage and resists oil and other shop fluids. Coat pre-cut gaskets to increase reliability. Temperature range -65°F to 400°F (-54°C to 204°C) continuous, 500°F (250°C) intermittent. Low volatility. Fills gaps to 0.25” when fully cured.

Item #	Size	Part #
80628	12.9 oz Cartridge	6C



### Permatex® High-Temp Red RTV Silicone Gasket Maker

Formulated for high-temp applications. It replaces almost any cut gasket by making reliable “formed-in-place” gaskets that resist cracking, shrinking and migrating caused by thermal cycling. Coat pre-cut gaskets to increase reliability. Temperature range -65°F to 600°F (-54°C to 316°C) continuous, 650°F (343°C) intermittent. Fills gaps to 0.25” when fully cured. MIL-A-46106 B, Type 1.



Item #	Size	Part #
81630	3 oz Tube, Carded	26BR
85915	7.25 oz PowerBead™ Can	NA
81409	11 oz Cartridge	26C



### Permatex® Ultra Copper® RTV Silicone Gasket Maker

Premium silicone designed to provide reliable, tough, flexible formed-in-place gaskets for mechanical assemblies. Temperature range -65°F to 600°F (-54°C to 316°C) continuous, 700°F (371°C) intermittent

Item #	Size	Part #
81878	3 oz Tube, Carded	101BR

### Permatex® Anaerobic Gasket Maker

Ideal for on-the-spot and emergency repairs, or when a conventional gasket is out of stock. This single component, thixotropic gasket maker cures rapidly for a medium strength, solvent resistant seal that resists temperatures up to 300°F (149°C) and fills gaps to 0.050” (primed). Can be used on a variety of metal surfaces including aluminum. Parts disassemble easily even after extended service.

Item #	Size
51813	50 ml Tube, Carded

### Permatex® Anaerobic Flange Sealant

Flexible gasketing material ideal for use on rigid, machined flanges. Withstands temperatures to 300°F (149°C). Fills gap of 0.050” (primed) and eliminates the need for preformed gaskets. Ideal for flanges that move in service.

Item #	Size
51531	50 ml Tube



## ANTI-SEIZE & GASKET SEALANTS

### Permatex® Form-A-Gasket® No. 1 Sealant

Reliable paste-like gasket sealant/dressing/coating. Form-A-Gasket® No. 1 sets quickly. Recommended for rigid, permanent assemblies. Use to 400°F (204°C). Resistant to gasoline and other solvents.

Item #	Size	Part #
80003	11 oz Tube, Boxed	1C

### Permatex® Form-A-Gasket® No. 2 Sealant

Reliable paste-like gasket sealant/dressing/coating. Form-A-Gasket® No. 2 sets more slowly to a pliable film best suited for non-rigid, vibrating assemblies. Use to 400°F (204°C). Resistant to gasoline and other solvents.

Item #	Size	Part #
80016	3 oz tube, Carded	2BR
80011	11 oz tube, Boxed	2C

### Permatex® Aviation Form-A-Gasket® No. 3 Sealant

Non-hardening liquid gasket sealant/dressing/coating is a thin, brushable dressing or sealer for close-fitting parts. Suitable for continuous temperatures to 400°F (204°C). Resistant to antifreeze, aviation fuels, high-detergent oils and lubricants.

Item #	Size	Part #
80017	16 fl oz Bottle	3D

## RETAINING COMPOUNDS

### Permatex® Bearing Mount for Relaxed Fits

High strength, medium viscosity anaerobic adhesive for slip fit assemblies. Provides 3,500 psi shear strength on steel. Prevents fretting and corrosion. Fixture time is 10 minutes at room temperature.

Item #	Size
68050	50 ml Bottle



## SILICONE SEALANTS

### Permatex® Clear RTV Silicone Adhesive Sealant

General-purpose, clear RTV sealant. Seals, bonds, repairs, mends and secures glass, metal, plastics, fabric, vinyl, weather stripping and vinyl tops. May be applied to horizontal or vertical surfaces. Waterproof and flexible. Temperature range -75°F to 400°F (-59°C to 204°C); resists oil, water, weather, vibration, grease and more. Non-paintable. Mil-A-46106B, Type I.

Item #	Size
80050	3 oz Tube, Carded
85913	7.25 oz PowerBead™ Can
80855	11 oz Cartridge

### Permatex® Black Silicone Adhesive Sealant

General-purpose, black RTV sealant. Seals, bonds, repairs, mends and secures glass, metal, plastics, fabric, vinyl, weather stripping and vinyl tops. May be applied to horizontal or vertical surfaces. Waterproof and flexible. Temperature range -75°F to 450°F (-59°C to 232°C); resists oil, water, weather, vibration, grease and more. Non-paintable. Mil-A-46106B, Type I.

Item #	Size	Part #
81173	12.9 oz Cartridge	16C

## ANTI-SEIZE LUBRICANTS

### Permatex® Anti-Seize Lubricant

A heavy-duty blend of aluminum, copper and graphite lubricants in a petroleum base. Use during assembly to prevent galling, corrosion and seizing and to assure easier disassembly. An inert formulation, it will not evaporate or harden in extreme temperatures. Salt-, corrosion- and moisture-resistant. Temperature range -60°F to 1,600°F (-51°C to 871°C). Non-aerosol version meets Mil-Spec A-907. Δ NFPA Fire Code 30B: Level 3 (aerosol).

Item #	Size	Part #
80078	8 oz Brush-Top Bottle	133K
80208	16 oz Brush-Top Bottle	767

### Permatex® Copper Anti-Seize Lubricant

A premium quality copper anti-seize and thread lubricant that may be used to prevent seizing, corrosion and galling where high temperature conditions exist. Temperature range -30°F to 1,800°F (-34°C to 982°C). Provides good electrical conductivity. Meets Mil-Spec A-907.

Item #	Size
09128	Brush-Top Bottle



### Permatex® Nickel Anti-Seize Lubricant

Copper-free anti-seize lubricant that protects metal parts from seizing and galling at temperatures up to 2,400°F (1,316°C). Ideal for use under conditions of extreme pressure and temperature and with stainless steel, titanium and nickel alloys.

Item #	Size	Part #
77124	Brush-Top Bottle	771

## HAND CLEANERS

You need a waterless hand cleaner that really cleans – without turning your hands into sandpaper. You need the strength to remove grease, grime, paint, adhesives and all other soils your working hands get into – plus conditioners to prevent your hands from cracking and drying out. Permatex® hand cleaners are the choice of working hands. For over 50 years, Permatex® has offered high-quality hand cleaners and has maintained a leadership position through innovation and a concern for users' needs. Wherever hands are getting dirty, there's a place for Permatex® hand cleaners. To meet your growing needs, Permatex® offers a broad selection of product formulations and sizes.

### Permatex® Fast Orange® Pumice and Smooth Lotion Hand Cleaners

Industrial grade, biodegradable, waterless, petroleum solvent-free hand cleaner. It contains no harsh chemicals, mineral oils or ammonia that can sting cuts and abrasions. Pure, fresh-smelling natural citrus power does the cleaning while aloe, lanolin, glycerin and jojoba condition and protect skin. Fast Orange® gently deep cleans the toughest dirt and grease.



#### Pumice Lotion

Item #	Size
25219	1 gallon bottle w/pump

#### Smooth Lotion

Item #	Size
23218	1 gallon bottle w/pump

## AGENCY APPROVALS AND REFERENCES

### Devcon® Mil-Spec, UL and Other Government Specifications

Product Category	Specification	Product	Part #	Size
Devcon® Silicone Adhesive Sealants	A-46106A	Silite® Silicone RTV-Clear	17150	10.3 oz Cartridge
		Silite® Silicone RTV (High Temp.)	17130	10.3 oz Cartridge

Product Category	Specification	Product	Part #	Size
Devcon® Metal Repair Compounds	MIL-PRF-24176C, Type I	Plastic Steel® Putty (A)	10110	1 lb
			10120	4 lb
		Titanium Putty	10760	1 lb
			10770	2 lb
		Ceramic Repair Putty	11700	3 lb
			10610	1 lb
	MIL-PRF-24176C, Type II	Aluminum Putty (F)	10620	3 lb
			10210	1 lb
			10220	4 lb
	MMM-A-1754	Plastic Steel® Liquid (B)	10210	1 lb
			10220	4 lb
			10710	1 lb
		Aluminum Liquid (F-2)	10720	3 lb
			10720	3 lb

### Devcon® NSF Registered Products

Product Category	NSF Approval	Product	Part #	Size
Devcon® Silicone Adhesive Sealants	NSF/ANSI 51	Silite® Silicone RTV-Clear	17150	10.3 oz Tube
		Silite® Silicone RTV (High Temp.)	17140	10.3 oz Tube
Devcon® Metal Repair Compounds	NSF/ANSI 61	Stainless Steel Putty	10270	1 lb
		Brushable Ceramic (White)	11770	2 lb
Devcon® Flooring Repair	R2	Floor Patch™	13100	10 lb.
			13120	40 lb
		Epoxy Coat™ 7000 Non VOC	12710	2 gal

### Shore Hardness

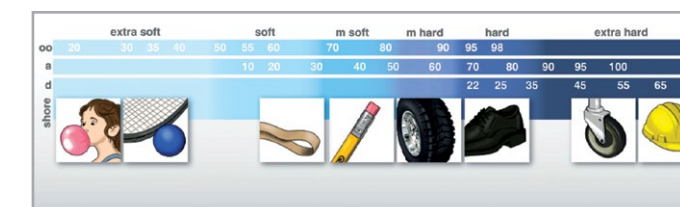
Sample Material	Shore Hardness	Scale
Bicycle Gel Seat	15-30	OO
Chewing Gum	20	OO
Rubber Band	20-25	A
Pencil Eraser	40	A
Door Seal	55	A
Car Tire Tread	60-70	A
Running Shoe Sole	70	A
Soft Skateboard Wheel	78	A
Leather Belt	80	A
Hydraulic O-Ring	70-90	A
Hard Skateboard Wheel	98	A
Shopping Cart Wheel	100	A
Ebonite Rubber	100	A
Solid Truck Tires	50	D
Hard Hat	75	D

### Devcon® ABS Type Approved Products

Product Category	ABS	Product	Part #	Size
Devcon® Urethane Repair Compounds	ABS	Flexane Brushable	15350	1 lb
Devcon® Metal Repair Putties	ABS	Plastic Steel® Putty (A)	10110	1 lb
			10120	4 lb
		Plastic Steel® 5 Minute® Putty (SF)	10240	1 lb
		Aluminum Putty (F)	10610	1 lb
			10620	3 lb
		Titanium Putty	10760	1 lb
			10770	2 lb
		Stainless Steel Putty (ST)	10270	1 lb
		Bronze Putty (BR)	10260	1 lb
		Ceramic Repair Putty	11700	3 lb
Devcon® Metal Repair Liquids/Wearing Compounds	ABS	Plastic Steel® Liquid (B)	10210	1 lb
			10220	4 lb
		Aluminum Liquid (F2)	10710	1 lb
			10720	3 lb
		Brushable Ceramic Red	11760	2 lb
		Brushable Ceramic Blue	11765	2 lb
			11767	12 lb
		Brushable Ceramic White	11770	2 lb

### Plexus® ABS Type Approved Products

Product Category	ABS	Product	Part #	Size
Plexus® Adhesives	ABS	MA425 Cartridge	IT151X	490 ml
		MA425 Adhesive	IT152 / IT150	5 / 50 gal
		MA425 Activator	IT159	5 gal
		MA530 Cartridge Gray / White	53000 / 53500	400 ml
		MA530 Adhesive	IT203 / IT200	5 / 50 gal
		MA530 Activator	IT205 / IT206	5 gal
		MA550 Cartridge	35000X	490 ml
		MA550 Activator	35420	5 gal
		MA550 Adhesive	35200 / 35800	5 / 50 gal
		MA560-1 Cartridge Black / White	56000 / 56500	400 ml
		MA560-1 Adhesive	IT213 / IT210	5 / 50 gal
		MA560-1 Activator	IT219 / IT211	5 / 50 gal
		MA590 Cartridge	59000	400 ml
		MA590 Adhesive	IT177 / IT170	5 / 50 gal
		MA590 Activator / Activator White	IT178 / 50003	5 gal
		MA590 Activator	IT175	50 gal
		MA2245 Cartridge Blue / Black	22450 / 22451	490 ml
		MA2245 Adhesive	32245	50 gal



# AGENCY APPROVALS AND REFERENCES

## Permatex® Mil-Spec, UL and Other Government Specifications

Product Category	Specification	Product	Part #	Size
Permatex® ZIP GRIP® Instant Adhesives	A-A-3097, Type II, Class 1	GPE 3 Wicking	70144	14 g bottle
		GPE 30 All Purpose	70350	1 oz bottle
	A-A-3097, Type II, Class 3	TE 1000 Gap Filling	72161	1 lb bottle
		TE 2400 Gap Filling-Hi Temp	72250	1 oz bottle
Permatex® Threadlockers Liquids	S-46163A, Type II, Grade N	Medium Strength Threadlocker BLUE	24210	10 ml bottle
			24250	50 ml bottle
	S-46163A, Type II, Grade O	Permanent Strength Threadlocker RED	26210	10 ml bottle
			26250	50 ml bottle
	S-46163A, Type I, Grade K	High Strength Threadlocker RED	27110	10 ml bottle
			27150	50 ml bottle
	S-46163A, Type III, Grade R	Penetrating Grade Threadlocker GREEN	29025	250 ml bottle
	Permatex® Silicone Adhesive Sealants	A-46106B, Type I	Clear RTV Silicone Adhesive Sealant	80050
85913				7.25 oz PowerBead™ can
80855				11 oz cartridge
High Temp Red RTV Silicone Gasket		85915	7.25 oz PowerBead™ can	
		81409	11 oz cartridge	
		Black Silicone Adhesive Sealant	81158	3 oz tube
81173			12.9 oz cartridge	

## Permatex® NSF Registered Products

Product Category	NSF® Approval	Product	Part #	Size			
Permatex® Liquid Threadlockers	P1	Medium Strength Threadlocker BLUE	24210	10 ml Bottle			
			24250	50 ml Bottle			
			26210	10 ml Bottle			
		Permanent Strength Threadlocker RED	26250	50 ml Bottle			
			Permatex® Gel Threadlockers	P1	Medium Strength Threadlocker BLUE	24010	10 g Gel Twist™ Carded
					High Strength Threadlocker RED	27010	10 g Gel Twist™ Carded
Permatex® Thread Sealants	P1	High Performance Thread Sealant	56521	50 ml tube, Carded			
			56525	250 ml Tube			
Permatex® Retaining Compounds	P1	Bearing Mount for Relaxed Fits	68050	50 ml Bottle			
Permatex® Gasket Makers	P1	ULTRA BLUE® RTV Silicone Gasket Maker	81724	3.35 oz tube, Carded			
			81725	13 oz Cartridge			
			S2	The Right Stuff® Gasket Maker	25224	7 oz Automatic Tube	
					29208	5 oz Cartridge	
					85224	9.5 oz PowerBead™ Can	
					33694	10.1 fl oz Cartridge	
	P1	Anaerobic Gasket Maker			51813	50 ml tube, Carded	

# PRODUCT INDEX



Item	Page
10110	29
10120	29
10210	29
10220	29
10240	29
10260	31
10270	29
10610	29
10620	29
10710	29
10720	29
10760	27
10770	27
10780	31
11301	20
11320	20
11330	20
11340	20
11350	20
11410	31
11420	31
11430	22
11470	22
11483	22
11490	22
11495	22
11500	31
11700	27
11730	27
11760	27
11765	27
11767	27
11770	27
11781	27
11801	29
12560	33
12710	33
12750	33
13100	33
13120	33
13130	33
13550	33
14200	10
14210	10
14240	10
14250	10
14251	11
14255	11
14260	11
14265	10
14270	10
14277	10
14278	11
14310	11
14355	11
14415	11
14510	12
14630	10
15049	25
15050	25
15250	25
15260	25
15330	25
15350	25
15550	24
15565	24
15800	25
15810	25
15820	25
15850	25
15940	25
15980	25
15985	25
17130	12
17150	12
19510	31
19600	25
19600	31
70144	12
70350	12
72250	12
72261	12
DA051	10
DA052	10
DA999	11



Item	Page
14300	4
20155	9
20305	9
20455	9
22303	9
22450	9
22451	9
22903	9
30000	4
30500	4
31000	4
31500	4
32000BX	6
32000WX	6
32000X	6
32200	6
32245	9
32420	6
32800	6
32910	6
35000X	8
35200	8
35420	6
35420	8
35701	7
35800	8
35900X	8
35910	8
41100	5
41101	5
41102	5
41103	5
41104	5
42000	8
42002	8
53000	4
56000	4
56500	4
56500	4
59000	5
81057	5
81058	5
81101	5
81101	5
81102	5
81102	5
81103	5
81104	5
81108	5
81111	5
81203	5
81204	5
81208	5
81211	5
IP120	9
IT025X	6
IT100	7
IT101BX	7
IT101X	7
IT102	7
IT112	7
IT112	7
IT112	8
IT114	7

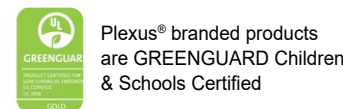
Item	Page
IT114	7
IT114	8
IT114	8
IT114	8
IT132	8
IT133	8
IT140	7
IT140	7
IT140	8
IT150	8
IT151X	8
IT152	8
IT159	8
IT159	8
IT170	5
IT175	5
IT177	5
IT178	5
IT185	8
IT186X	8
IT187X	8
IT188	8
IT200	4
IT203	4
IT205	4
IT206	4
IT210	4
IT211	4
IT213	4
IT219	4
IT220	8
IT222X	8
IT225	8
IT232X	9
IT235	9
IT236	9
IT237	9
IT247	9
IT247	9
IT247	9
IT258	8
IT258	8
IT259	8
IT259	8
IT330	8
IT331X	8
IT332X	8
IT333	8
IT405	4
IT406	4
IT406	4
IT407	4
IT408	4
IT408	4
IT410	4
IT412	4
IT435	4
IT437	4
IT496	9
IT496	9
IT800X	7
IT801	7
IT804X	7



Item	Page
100009	15
100065	16
100066	16
103104	15
103107	15
103108	15
103109	15
103121	15
103201	15
103202	15
103211	15
103212	15
103216	15
103305	15
103350	15
103404	16
103409	16
103412	15
103412	15
103769	15
103770	15
103837	16
103840	16
103846	16
103852	16
103857	16
103865	16
103866	16
103975	14
103979	15
103981	16
103993	14
103994	15
103995	14



Item	Page
09128	40
23218	40
24010	35
24105	37
24210	35
24250	35
24325	35
25210	35
25219	40
25224	37
25228	37
26210	35
26250	35
27010	35
27110	35
27150	35
33694	37
51531	38
51813	38
54550	36
56521	36
56750	36
57535	36
68050	39
77124	40
80003	38
80011	38
80016	38
80017	38
80045	36
80050	39
80078	40
80208	40
80628	38
80632	36
80633	36
80855	39
81173	39
81409	38
81630	38
81724	37
81725	37
81878	38
82180	37
82194	37
82195	37
85080	37
85224	37
85913	39
85915	38



SDS/TDS: Access SDSs and TDSs from our website: [itwpp.com](http://itwpp.com). Select the product brand to search.

### EXCLUSIONS OF WARRANTIES:

AS TO THE HEREIN DESCRIBED MATERIALS, THERE ARE NO WARRANTIES WHICH EXTEND BEYOND THE DESCRIPTION ON THE FACE HEREOF. ITW PERFORMANCE Polymers MAKES NO OTHER WARRANTIES, EXPRESS OR IMPLIED, INCLUDING BUT NOT LIMITED TO ANY IMPLIED WARRANTY OF MERCHANTABILITY OR FITNESS FOR A PARTICULAR PURPOSE. SINCE THE USE OF THE HEREIN DESCRIBED MATERIALS INVOLVES MANY VARIABLES IN METHODS OF APPLICATION, HANDLING AND/OR USE, THE USER IN ACCEPTING AND USING THESE MATERIALS ASSUMES ALL RESPONSIBILITY FOR THE END RESULT. ITW PANA SHALL NOT OTHERWISE BE LIABLE FOR LOSS OF DAMAGES, WHETHER DIRECT, INDIRECT, SPECIAL, INCIDENTAL OR CONSEQUENTIAL, REGARDLESS OF THE LEGAL THEORY ASSERTED, INCLUDING NEGLIGENCE, WARRANTY OR STRICT LIABILITY.

Visit [itwpp.com](http://itwpp.com) for our terms of sale, detailed warranties and exclusions, questions on agency approvals, certifications and SDS/TDS.

## Dispensing Equipment

Item	Page	Item	Page
3333	13	30016	13
14280	13	30020	13
14285	13	30076	13
30010	13	30077	13
30013	13	30095	13

# GLOBAL OPERATIONS

## North America

### ITW Performance Polymers

30 Endicott Street  
Danvers, MA 01923 USA  
Tel: +1 855-489-7262

[cs@itwpp.com](mailto:cs@itwpp.com)

[itwpp.com](http://itwpp.com)

### ITW Performance Polymers

130 Commerce Drive  
Montgomeryville, PA 18936  
Tel: +1 215-855-8450

[customerservice.na@itwpp.com](mailto:customerservice.na@itwpp.com)

[itwpp.com](http://itwpp.com)

## South America

### ITW PP&F

Rua Antonio Felamingo, 430  
Valinhos / SP – CEP: 18279-452  
Tel: +55 19 2138.7600

[itwppf.com.br](http://itwppf.com.br)

## Europe

### ITW Performance Polymers

Bay 150,  
Shannon Industrial Estate  
Shannon, County Clare  
Ireland

Tel: +353 61 771500

[customerservice.shannon@itwpp.com](mailto:customerservice.shannon@itwpp.com)

[itwpp.com](http://itwpp.com)



**Devcon**

**PLEXUS**

**SprayCore**

**Permatex**

© April 2025 ITW Performance Polymers

All rights reserved

The technical information, recommendations, and other statements contained in this brochure are based upon good faith tests or experience that ITW Performance Polymers believes are reliable, but the accuracy or completeness of such information is not guaranteed. The information provided is not intended to substitute for the customers' own testing.

[itwpp.com](http://itwpp.com)

## Asia Pacific

### ITW PP&F China

2703, XingYuan Building  
No. 418, Guiping Rd.  
Cao He Jing Hi-Tech Park  
Shanghai

China 200233

Tel: +86-21-5426-1212

[itwppfchina.com](http://itwppfchina.com)

### ITW PP&F Japan

30-32 Enoki-cho,  
Suita, Osaka, Japan 564-0053  
Tel: +81-6-6330-7118

[itwppfjapan.com](http://itwppfjapan.com)

### ITW PP&F Korea

13th floor, PAX Tower, Unit B  
231-13, Nonhyeon-Dong, Gangnam-Gu

Seoul, Korea 135-010

Tel: +82-2-2088-3560

[itwppfkorea.com](http://itwppfkorea.com)

## ITW PP&F Polymers Australia

100 Hassall Street, Wetherill Park  
NSW 2164

Tel: +800 063 511

[itwppf.com.au](http://itwppf.com.au)

## ITW India Limited

Plot no: 34 to 37, Phase-2,  
IDA, APIIC, Pashamylaram,  
Medak Dist-502307

Andhra Pradesh, India

Tel: +08455-224700,224701

[chemininfo@itwchemin.com](mailto:chemininfo@itwchemin.com)

[itwchemin.com](http://itwchemin.com)

