



Water Treatment and Processing

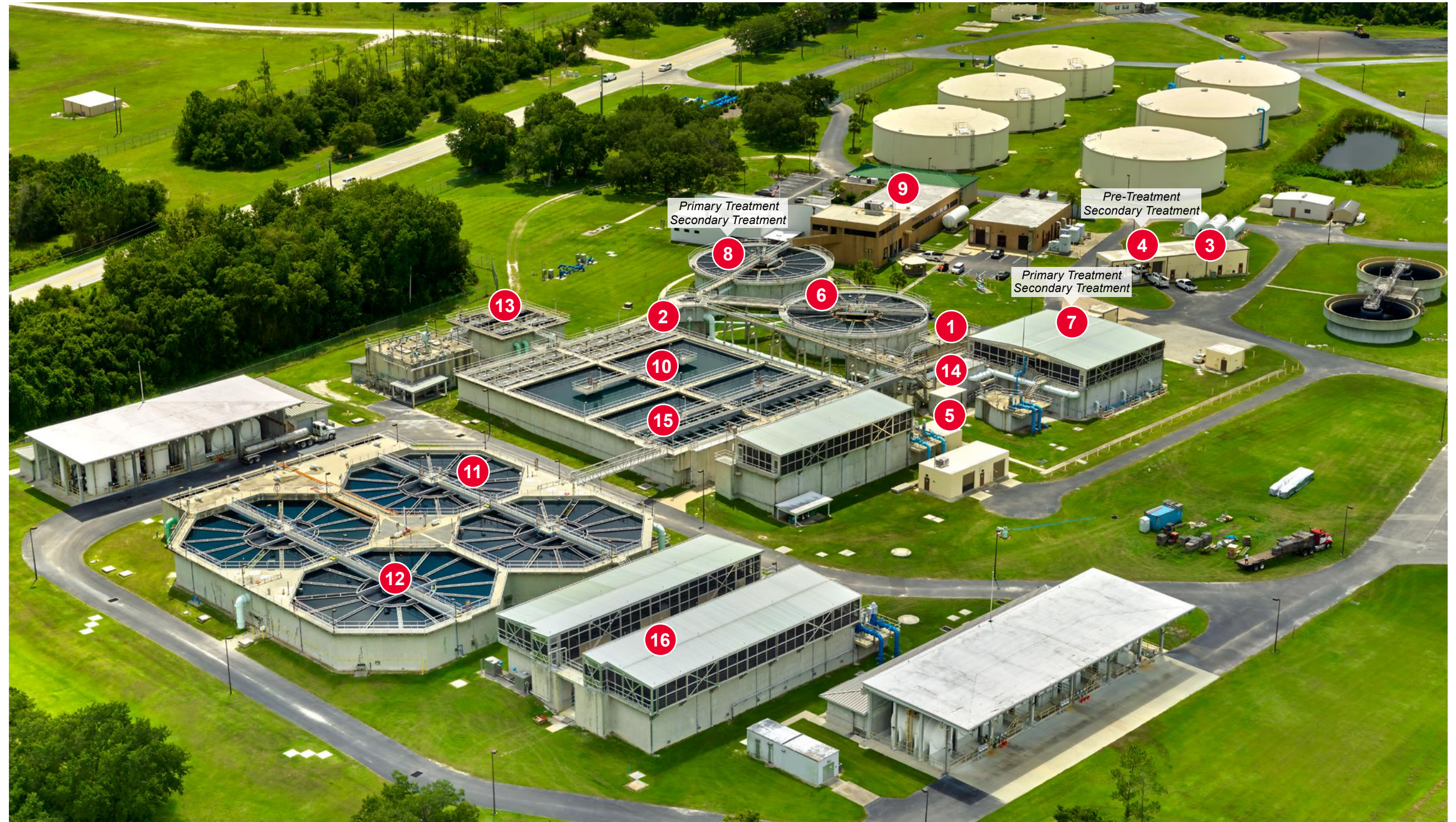
Repair Solutions and Protective Coatings



Wastewater Applications

Preventive Maintenance and Emergency Repairs

- 1** Bar Screens
- 2** Parshall Flumes
- 3** Gravity Belt Thickener
- 4** Grit Chamber
Pre-Treatment
Secondary Treatment
- 5** Weir
- 6** Primary Clarifier
- 7** Pumping Station
Primary Treatment
Secondary Treatment
- 8** Auger
Primary Treatment
Secondary Treatment
- 9** Centrifuge
- 10** Aeration Tank
- 11** Secondary Clarifier
- 12** Disinfection
- 13** Chemical Tank
- 14** Screw Conveyor
- 15** Digester
- 16** Dewatering





Pre-Treatment Applications: Removing Dirt and Debris

Bar Screens



Bar screen tanks are often prone to leaking and spalling which can lead to function disruption and eventually needing a replacement. With Devcon products, the need to shut down production for extended periods of time for repair is mitigated, due to fast cure times and high adhesion qualities.

Additionally, bar screen shafts and volutes suffering from wear and tear over time are also prone to repairs and often replacements. Devcon makes applications easy and mess-free so repairs are attainable.



Solutions

Devcon® Ultra Quartz™

Heavy-duty, premium floor patching system with excellent chemical resistance.

Devcon® Floor Patch™

All purpose concrete patching compound with a compression strength of 8000 psi, three times the typical strength of concrete.

Devcon® Titanium Putty

A temperature resistant high compressive epoxy with resistance to chemicals and acids with an open time of 21 minutes.

Devcon® Brushable Ceramic

Low-viscosity, alumina-filled, brushable epoxy compound, when applied to a 15-20 mil coating, provides a smooth protective barrier against wear, abrasion, corrosion, erosion, and chemical attack.

Devcon® EZ-Spray Ceramic

Sprayable, solvent-free, high performance ceramic-filled epoxy for sealing, protecting and repairing surfaces subject to erosion, corrosion and wear.



Parshall Flumes



Parshall flumes are an essential part of the wastewater treatment process. Using Devcon products ensures the parshall flumes will continue to perform at the highest level. The Devcon epoxies / urethanes create a chemical resistant, non-sag, tough adhesion that stands up to the moisture heavy, demanding environment equipment is exposed to within a parshall flume.

Solutions

Devcon® Epoxy Concrete Sealer

A self-leveling epoxy that has outstanding resistance to chemicals, can be applied on damp surfaces and has an open time of 60 minutes.

Devcon® Flexane Fast-Cure Rubber Repair Liquid

Low-viscosity, fast-curing urethane liquid that repairs control / expansion joints in metal or concrete, and can also be used as an easy-to-apply belt splicing / edging filler material.

Gravity Belt Thickener



Gravity belt thickeners are extremely prone to wear and tear throughout their extensive use. Devcon products protect conveyor belts and parts from exposure to corrosion and chemicals and provide superior adhesion with minimal down time.

Solutions

Devcon® Flexane Fast-Cure Rubber Repair Putty

Fast curing urethane with a 8-minute working time. No mess dispensing with light serve duty in 3 hours.

Devcon® R-Flex®

Rapid curing with superior abrasion resistance and excellent flexibility with a fixture time of 7-9 minutes.

Grit Chamber



Grit chambers or sludge pumps are prone to corrosion and erosion in the split-casing pumps. Using Devcon Brushable Ceramic, grit chambers stay running at full capacity with minimal time needed for repairs.

Solutions

Devcon® Brushable Ceramic

Low-viscosity, alumina-filled, brushable epoxy compound, when applied to a 15-20 mil coating, provides a smooth protective barrier against wear, abrasion, corrosion, erosion, and chemical attack.





Primary Treatment: Removing Organic Material

Weir



Within the wastewater treatment process, weirs are exposed to long-lasting, high-water pressure which often causes wear on essential equipment. Devcon products can be used to bond all variety of weir parts quickly and easily, while maintaining the integrity needed for maximum usage.

Solutions

Devcon® Plastic Steel® 5-Minute® Putty (SF)

A quick hardening, steel-filled material that can be machined, drilled, tapped, or sanded.

Devcon® Plastic Steel® Putty (A)

Metal-filled epoxy putty for patching and repairing areas where welding or brazing would be undesirable or impossible.

Primary Clarifier



Primary clarifiers are an essential part of the wastewater treatment process and are often the equipment that needs the most repairs. Tanks regularly become spalled or broken, rubber scrapers get worn out, and metal surfaces accumulate pinhole leaks from corrosion. All can be solved easily by using Devcon products.

Solutions

Devcon® Floor Patch™

All purpose concrete patching compound with a compression strength of 8000 psi, three times the typical strength of concrete.

Devcon® Ultra Quartz™

Heavy-duty, premium floor patching system with excellent chemical resistance.

Devcon® Epoxy Concrete Sealer

A self-leveling epoxy that has outstanding resistance to chemicals, can be applied on damp surfaces and has an open time of 60 minutes.

Devcon® Flexane® 80 Putty

Trowelable, 100% solids, tear-resistant urethane compound used to line and repair process equipment exposed to impact abrasion, vibration, expansion, and contraction.

Devcon® Epoxy Coat™ 7000 AR

Self-leveling floor coating that protects surfaces from severe acid and chemical attack.

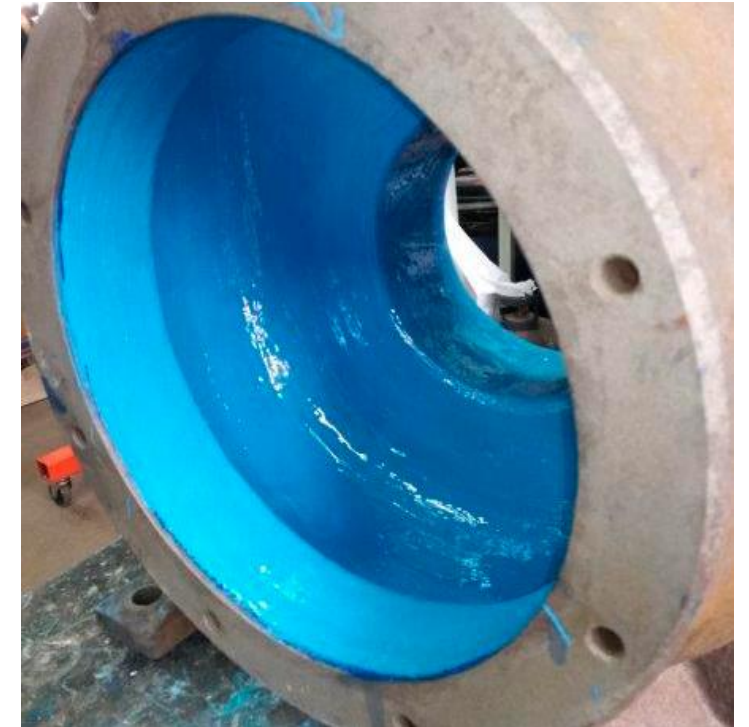
Devcon® Epoxy Coat™ 7000 (Non VOC)

Self-leveling floor coating that protects surfaces and can be applied to smooth or mildly spalled concrete.



The pumping station, centrifuge, and auger make up an immense portion of wastewater treatment as all three applications are present throughout the process and often suffer from a variety of maintenance issues. Devcon's wide array of repair solutions fit the needs found in wastewater treatment facilities.

Pumping Station & Centrifuge



Solutions

Devcon® Brushable Ceramic

Low-viscosity, alumina-filled, brushable epoxy compound, when applied to a 15-20 mil coating, provides a smooth protective barrier against wear, abrasion, corrosion, erosion, and chemical attack.

Devcon® EZ-Spray Ceramic

Sprayable, solvent-free, high performance ceramic-filled epoxy for sealing, protecting and repairing surfaces subject to erosion, corrosion and wear.

Auger



Solutions

Devcon® Aluminum Wear Compound

Aluminum-filled epoxy putty, for use where long-lasting, non-rusting robust repairs to metal surfaces are required.

Devcon® Plastic Steel® Putty (A)

Metal-filled epoxy putty for patching and repairing areas where welding or brazing would be undesirable or impossible.



Secondary Treatment: Biological Nutrient Removal, Remove Colloidal and Dissolved Organic Material

Aeration Tank



Within the wastewater treatment process, weirs are exposed to long-lasting, high-water pressure which often causes wear on essential equipment. Devcon products can be used to bond all variety of weir parts quickly and easily, while maintaining the integrity needed for maximum usage.

Solutions

Devcon® Ultra Quartz

Heavy-duty, premium floor patching system with excellent chemical resistance.

Devcon® Epoxy Concrete Sealer

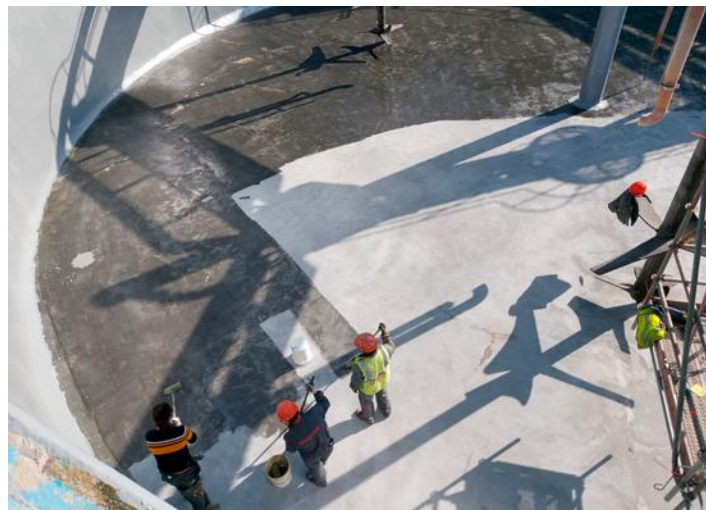
A self-leveling epoxy that has outstanding resistance to chemicals, can be applied on damp surfaces and has an open time of 60 minutes.

Devcon® Epoxy Coat™ 7000 AR

Self-leveling floor coating that protects surfaces from severe acid & chemical attack.

Devcon® Epoxy Coat™ 7000 (Non VOC)

Self-leveling floor coating that protects surfaces and can be applied to smooth or mildly spalled concrete.



Secondary Clarifier



Secondary clarifiers are an essential part of the wastewater treatment process and are often the equipment that needs extensive repairs. Tanks become spalled or broken, rubber scrapers worn out, and metal surfaces develop pinhole leaks from corrosion. Devcon products can solve these problems with ease.

Solutions

Devcon® Floor Patch™

All purpose concrete patching compound with a compression strength of 8000 psi, three times the typical strength of concrete.

Devcon® Ultra Quartz™

Heavy-duty, premium floor patching system with excellent chemical resistance.

Devcon® Epoxy Concrete Sealer

A self-leveling epoxy that has outstanding resistance to chemicals, can be applied on damp surfaces and has an open time of 60 minutes.

Devcon® Flexane® 80 Putty

Trowelable, 100% solids, tear-resistant urethane compound used to line and repair process equipment exposed to impact abrasion, vibration, expansion, and contraction.

Devcon® Epoxy Coat™ 7000 AR

Self-leveling floor coating that protects surfaces from severe acid and chemical attack.

Devcon® Epoxy Coat™ 7000 (Non VOC)

Self-leveling floor coating that protects surfaces and can be applied to smooth or mildly spalled concrete.

The pumping station, weir, and auger make up an immense portion of wastewater treatment as all three applications are present throughout the process and often suffer from a variety of maintenance issues. Devcon's wide array of repair solutions fit the needs found in wastewater treatment facilities.

Pumping Station



Solutions

Devcon® Brushable Ceramic

Low-viscosity, alumina-filled, brushable epoxy compound, when applied to a 15-20 mil coating, provides a smooth protective barrier against wear, abrasion, corrosion, erosion, and chemical attack.

Devcon® EZ-Spray Ceramic

Sprayable, solvent-free, high performance ceramic-filled epoxy for sealing, protecting and repairing surfaces subject to erosion, corrosion and wear.

Weir



Solutions

Devcon® Plastic Steel® 5-minute® Putty (SF)

A quick hardening, steel-filled material that can be machined, drilled, tapped, or sanded.

Devcon® Plastic Steel® Putty (A)

Metal-filled epoxy putty for patching and repairing areas where welding or brazing would be undesirable or impossible.

Auger



Solutions

Devcon® Aluminum Wear Compound

Aluminum-filled epoxy putty, for use where long-lasting, non-rusting robust repairs to metal surfaces are required.

Devcon® Plastic Steel® Putty

Metal-filled epoxy putty for patching and repairing areas where welding or brazing would be undesirable or impossible.





Finishing Treatment

Disinfection



Within the wastewater treatment process, disinfection is critical and the breakdown of equipment can lead to unwanted bacteria within the water output. Through using Devcon putty products, the equipment can be repaired within minutes with high compression and a tough resistant finish.

Solutions

Devcon® Plastic Steel Putty (A)

Metal-filled epoxy putty for patching and repairing areas where welding or brazing would be undesirable or impossible.

Devcon® Titanium Putty

A temperature resistant high compressive epoxy with resistance to chemicals and acids with an open time of 21 minutes.

Chemical Tank



The chemical tank needs solutions that withstand high volumes of chemicals and maintain integrity throughout usage. Devcon manufactures a wide variety of solutions that fit different needs for individual plant layouts.

Solutions

Devcon® Titanium Putty

A temperature resistant high compressive epoxy with resistance to chemicals and acids with an open time of 21 minutes.

Devcon® Brushable Ceramic

Low-viscosity, alumina-filled, brushable epoxy compound, when applied to a 15-20 mil coating, provides a smooth protective barrier against wear, abrasion, corrosion, erosion, and chemical attack.

Devcon® Zip Patch™

High-technology, adhesive-impregnated patching system that cures at room temperature and makes permanent, waterproof field repairs to pipes, tanks, and containers.

Devcon® Floor Patch™

All purpose concrete patching compound with a compression strength of 8000 psi, three times the typical strength of concrete.

Devcon® Epoxy Concrete Sealer

A self-leveling epoxy that has outstanding resistance to chemicals, can be applied on damp surfaces and has an open time of 60 minutes.

Devcon® Epoxy Coat™ 7000 AR

Self-leveling floor coating that protects surfaces from severe acid and chemical attack.

Devcon® Epoxy Coat™ 7000 (Non VOC)

Self-leveling floor coating that protects surfaces and can be applied to smooth or mildly spalled concrete.



Sludge Digestion

Screw Conveyor



The screw conveyor after continuous use risks wearing down. Through using Devcon repair compounds, the wear can be mitigated to a tough, non-rusting solution.

Solutions

Devcon® Aluminum Wear Compound

Aluminum-filled epoxy putty, for use where long-lasting, non-rusting robust repairs to metal surfaces are required.

Devcon® Wear Guard™ Fine Load

High-density epoxy system for equipment protection that handles particulate smaller than 1/8 inches.

Dewatering



The dewatering process has many components and associated equipment which is why the wide array of Devcon products is ideal to fit the varying needs of the wastewater treatment process.

Solutions

Devcon® Flexane® 80 Putty

Trowelable, 100% solids, tear-resistant urethane compound used to line and repair process equipment exposed to impact abrasion, vibration, expansion, and contraction.

Devcon® Epoxy Coat™ 7000 (Non VOC)

Self-leveling floor coating that protects surfaces and can be applied to smooth or mildly spalled concrete.

Devcon® Epoxy Concrete Sealer

Self-leveling, has outstanding resistance to many chemicals and has an open time of 1 hour.

Digester



Within the wastewater treatment process, the digester must continuously run or else the whole process is disrupted. When equipment needs repairs, efficiency and long-lasting is key, both of which are possible with Devcon products.

Solutions

Devcon® Titanium Putty

A temperature resistant high compressive epoxy with resistance to chemicals and acids with an open time of 21 minutes.

Devcon® Brushable Ceramic

Low-viscosity, alumina-filled, brushable epoxy compound, when applied to a 15-20 mil coating, provides a smooth protective barrier against wear, abrasion, corrosion, erosion, and chemical attack.

Devcon® Zip Patch™

High-technology, adhesive-impregnated patching system that cures at room temperature and makes permanent, waterproof field repairs to pipes, tanks, and containers.

Devcon® Floor Patch™

All purpose concrete patching compound with a compression strength of 8000 psi, three times the typical strength of concrete.

Devcon® Epoxy Concrete Sealer

A self-leveling epoxy that has outstanding resistance to chemicals, can be applied on damp surfaces and has an open time of 60 minutes.

Devcon® Epoxy Coat™ 7000 AR

Self-leveling floor coating that protects surfaces from severe acid and chemical attack.

Devcon® Epoxy Coat™ 7000 (Non VOC)

Self-leveling floor coating that protects surfaces and can be applied to smooth or mildly spalled concrete.

Global Operations

North America

ITW Performance Polymers

30 Endicott Street
Danvers, MA 01923 USA
Tel: +1 855-489-7262
cs@itwpp.com
itwpp.com

ITW Performance Polymers

130 Commerce Drive
Montgomeryville, PA 18936 USA
Tel: +1 215-855-8450
customerservice.na@itwpp.com
itwpp.com

South America

ITW PP&F

Rua Antonio Felamingo, 430
Macuco - Valinhos/SP-Brazil 13279-452
Tel: +55 19 2138.7600
itwppf.com.br

Europe

ITW Performance Polymers

Bay 150,
Shannon Industrial Estate Shannon,
County Clare Ireland
Tel: +353 61 771500
customerservice.shannon@itwpp.com
itwpp.com

Asia Pacific

ITW PP&F China

2703, XingYuan Building
No. 418, Guiping Rd.
Cao He Jing Hi-Tech Park
Shanghai
China 200233
Tel: +86-21-5426-1212
itwppfchina.com

ITW PP&F Japan

30-32 Enoki-cho,
Suita, Osaka, Japan 564-0053
Tel: +81-6-6330-7118
itwppfjapan.com

ITW PP&F Korea

13th floor, PAX Tower, Unit B
231-13, Nonhyeon-Dong,
Gangnam-Gu
Seoul, Korea 135-010
Tel: +82-2-2088-3560
itwppfkorea.com

ITW PP&F Polymers Australia

100 Hassall Street, Wetherill Park
NSW 2164
Tel: +800 063 511
itwppf.com.au

ITW India Limited

Plot no: 34 to 37, Phase-2,
IDA, APIIC, Pashamylaram,
Medak Dist-502307
Andhra Pradesh, India
Tel: +08455-224700,224701
chemininfo@itwchemin.com
itwchemin.com

© 2023 ITW Performance Polymers

All rights reserved

The technical information, recommendations, and other statements contained in this brochure are based upon good faith tests or experience that ITW Performance Polymers believes are reliable, but the accuracy or completeness of such information is not guaranteed. The information provided is not intended to substitute for the customers' own testing.



Devcon[®]

itwpp.com