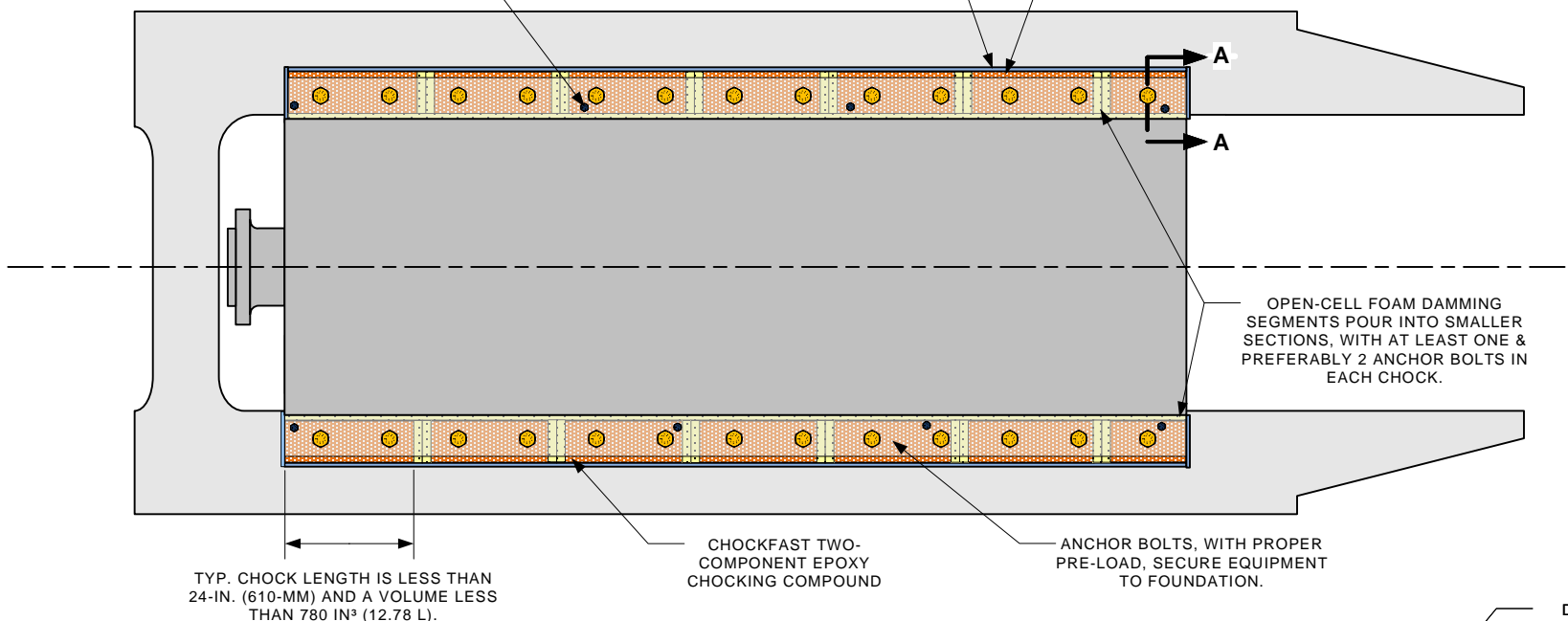


FINAL EQUIPMENT POSITION SET WITH REMOVABLE ALIGNMENT DEVICES, SUCH AS LEVELING SCREWS, PRIOR TO POURING CHOCK.

METAL DAMS, MIN. THICKNESS 1/4" (6-MM), TACK WELDED INTO PLACE AND SPRAYED WITH ITW RELEASE AGENT FOR EASY REMOVAL.

OVERPOUR ON SINGLE SIDE, OR TWO PARALLEL SIDES, PERPENDICULAR TO MOTION OF MACHINERY.



OPEN-CELL FOAM DAMMING SEGMENTS POUR INTO SMALLER SECTIONS, WITH AT LEAST ONE & PREFERABLY 2 ANCHOR BOLTS IN EACH CHOCK.

TYP. CHOCK LENGTH IS LESS THAN 24-IN. (610-MM) AND A VOLUME LESS THAN 780 IN³ (12.78 L).

CHOCKFAST TWO-COMPONENT EPOXY CHOCKING COMPOUND

ANCHOR BOLTS, WITH PROPER PRE-LOAD, SECURE EQUIPMENT TO FOUNDATION.

DIMENSIONALLY STABLE WASHER, TENSION SLEEVE, OR SPHERICAL WASHER WITH CONE SOCKET

NUTS ON ANCHOR BOLTS SHOULD BE HAND-TOOL TIGHT DURING CHOCK INSTALLATION TO PREVENT FLOATING.

1/2 - 3/4 IN. (12-18 MM) OVERPOUR WIDTH

SPRAY ITW RELEASE AGENT INSIDE CHOCK AREA AND ALL OVER METAL DAMS JUST PRIOR TO FILLING WITH CHOCKFAST.

1/2 - 3/4 IN. (12-18 MM) OVERPOUR HEIGHT

METAL FRONT DAM, PREFERABLY STEEL OR ANGLE IRON, AT LEAST 1/4 IN. (6 MM) THICK, WELL SEALED TO PREVENT LEAKAGE.

SOFTEN ALL SHARP CORNERS PROTRUDING INTO CHOCKFAST WITH FOAM-BACKED TAPE, PLUMBERS PUTTY, OR MECHANICAL MEANS TO REDUCE STRESS CONCENTRATION.

MACHINED PARALLEL FOR SEATING WASHER/NUT

OPEN CELL FOAM DAMMING

LEVELING SCREW, WELL WRAPPED OR COATED WITH NON-MELT GREASE TO PREVENT BONDING TO CHOCKFAST.

WRAP OR THICKLY COAT ANCHOR BOLTS TO PREVENT CONTACT BETWEEN THREADS AND CHOCKFAST, AS WELL AS LEAKAGE THROUGH BOLT HOLE.

SECTION A-A

NOTES

1. SIDE STOPPERS TO BE USED TO MITIGATE TRANSVERSE OR LATERAL MOVEMENT FOR DIESEL ENGINES AND SIMILAR.
2. PLEASE CONTACT YOUR LOCAL REPRESENTATIVE OF OUR WORLDWIDE DISTRIBUTOR NETWORK OR ITW PERFORMANCE POLYMERS FOR ANY QUESTIONS OR SUPPORT.

ITW Performance Polymers

DESCRIPTION

GENERAL RECOMMENDATIONS FOR EPOXY CHOCK INSTALLATION

CUSTOMER

CHOCKFAST USERS

DRAWN

BY CRME

DWG

612-1

DATE

4-OCT-23

SCALE

NTS

REV

0

ITW PERFORMANCE POLYMERS PROVIDES THE INFORMATION HEREIN ONLY AS A GOOD FAITH GUIDE, AND IT IS NOT AS A SUBSTITUTE FOR THE CUSTOMER'S OWN TESTING OR CALCULATIONS. THE CUSTOMER ASSUMES ALL RESPONSIBILITIES FOR DETERMINING THE SUITABILITY OF THE INFORMATION, OPINIONS, AND OUR PRODUCTS AS TO THE APPROPRIATE USE IN THEIR APPLICATION. THE ENCLOSED INFORMATION DOES NOT CREATE ANY WARRANTY, EXPRESS OR IMPLIED, INCLUDING ANY WARRANTY OF FITNESS FOR ANY PARTICULAR PURPOSE OR APPLICATION. UNDER NO CIRCUMSTANCES SHALL ITW PERFORMANCE POLYMERS BE LIABLE FOR ANY DAMAGES, WHETHER DIRECT, INDIRECT, INCIDENTAL OR CONSEQUENTIAL DAMAGES. OUR PRODUCTS ARE INTENDED FOR USE AND SALE TO INDUSTRIAL AND COMMERCIAL CUSTOMERS.