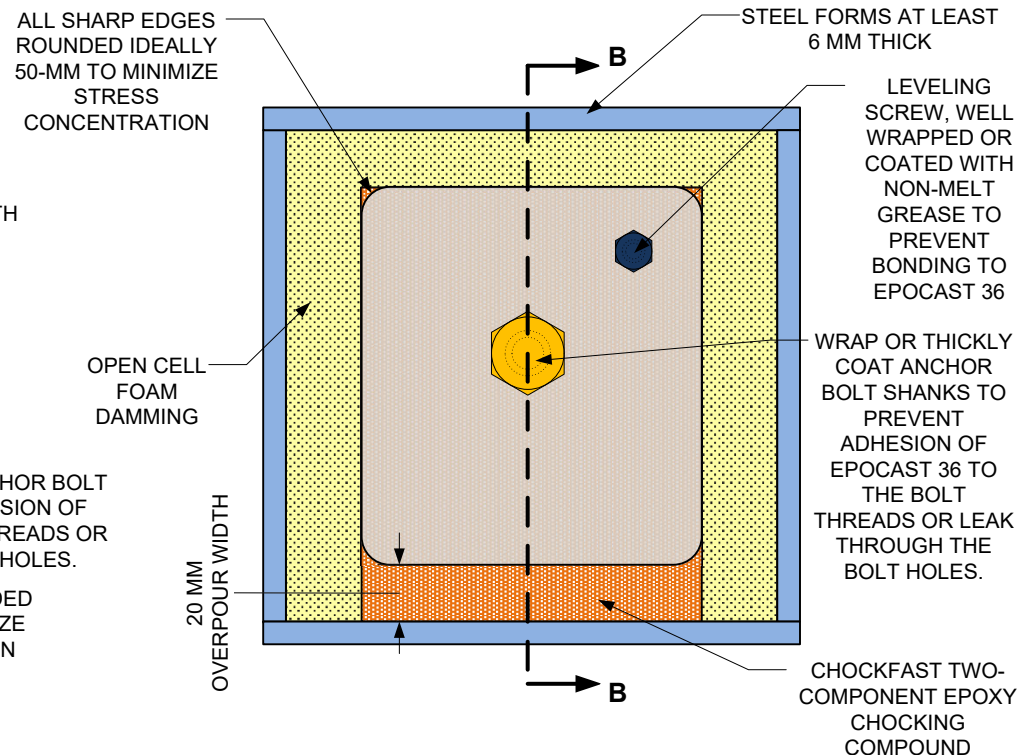
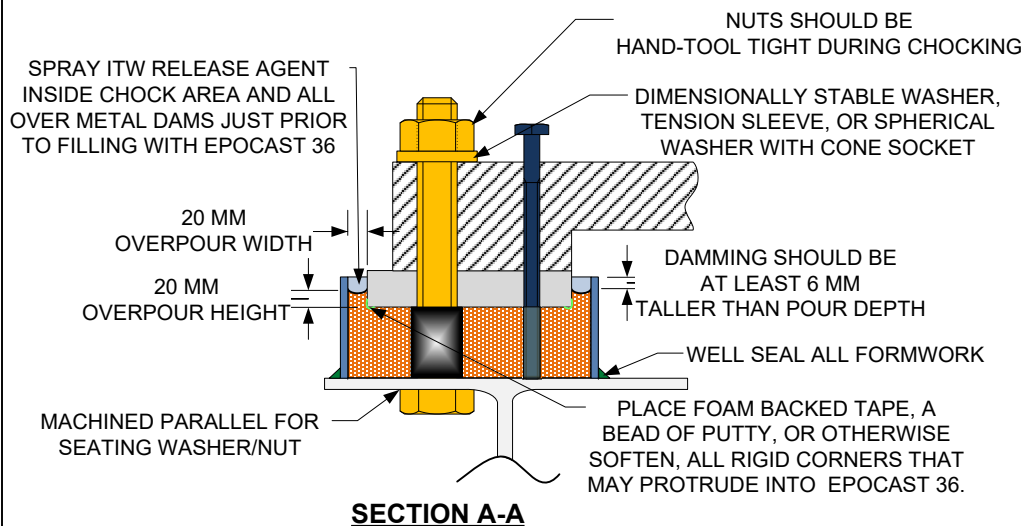


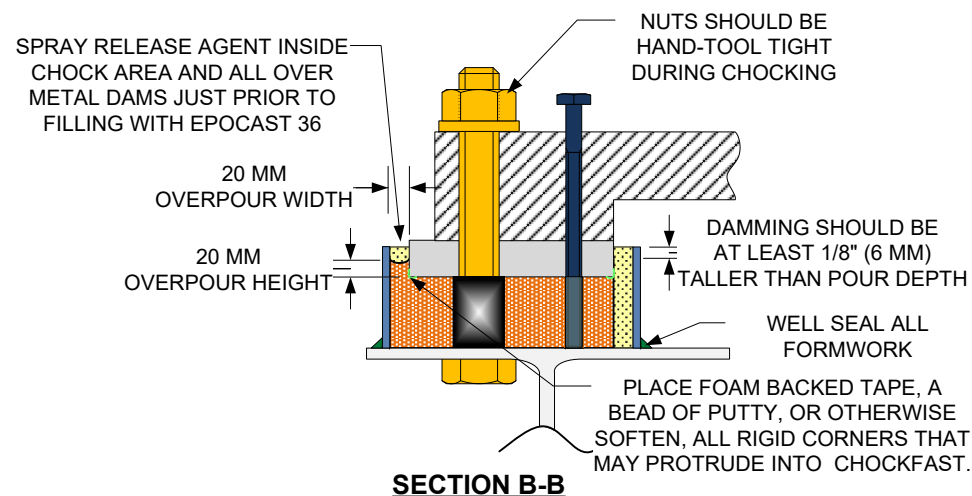
**GENERAL CHOCKING CONFIGURATION WITH SOLE PLATE/
MOUNTING FOOT – OPTION A**



**GENERAL CHOCKING CONFIGURATION WITH SOLE PLATE/
MOUNTING FOOT – OPTION B**



SECTION A-A



SECTION B-B

ITW Performance Polymers

DESCRIPTION

GENERAL RECOMMENDATIONS FOR SOLE PLATE MOUNTING

CUSTOMER

EPOCAST 36 USERS

DRAWN BY

EP36-11A

DATE

20-NOV-23

SCALE

1:2

REV

0

ITW PERFORMANCE POLYMERS PROVIDES THE INFORMATION HEREIN ONLY AS A GOOD FAITH GUIDE, AND IT IS NOT AS A SUBSTITUTE FOR THE CUSTOMER'S OWN TESTING OR CALCULATIONS. THE CUSTOMER ASSUMES ALL RESPONSIBILITIES FOR DETERMINING THE SUITABILITY OF THE INFORMATION, OPINIONS, AND OUR PRODUCTS AS TO THE APPROPRIATE USE IN THEIR APPLICATION. THE ENCLOSED INFORMATION DOES NOT CREATE ANY WARRANTY, EXPRESS OR IMPLIED, INCLUDING ANY WARRANTY OF FITNESS FOR ANY PARTICULAR PURPOSE OR APPLICATION. UNDER NO CIRCUMSTANCES SHALL ITW PERFORMANCE POLYMERS BE LIABLE FOR ANY DAMAGES, WHETHER DIRECT, INDIRECT, INCIDENTAL OR CONSEQUENTIAL DAMAGES. OUR PRODUCTS ARE INTENDED FOR USE AND SALE TO INDUSTRIAL AND COMMERCIAL CUSTOMERS.