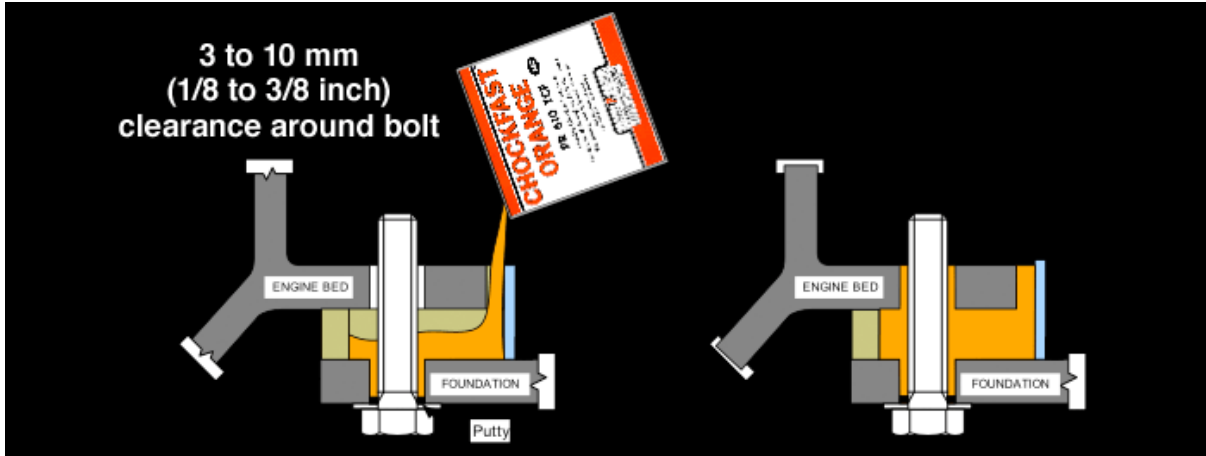


Special Chocking Situations and How to Handle Them

Creating a Fitted Bolt

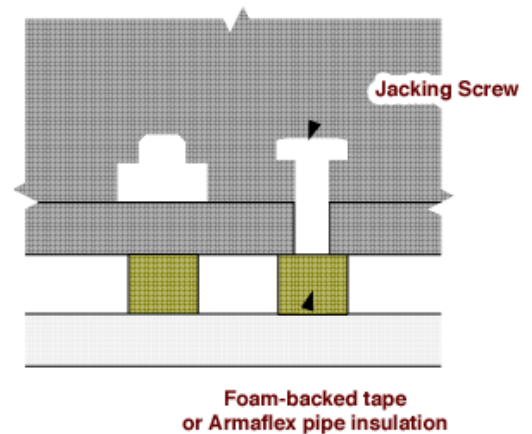
Spray the bolt with Release Agent. Seal the bottom of the bolt so it will not leak. Center the bolt in the hole and make sure it has 1/8 to 3/8 inch clearance. Fill chock area with Chockfast up to top of the bolt hole.



Jacking Screws

Whenever possible, do not pour Chockfast around a jacking screw.

If a jacking screw does fall inside a chock, wrap it with foam-backed tape, cover with Armaflex pipe insulation or coat with non-melt grease

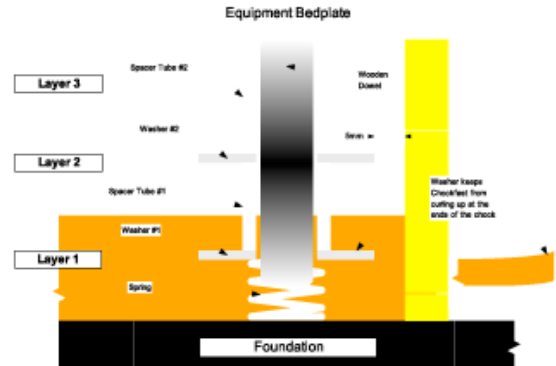


Chocking In Layers

The Hardener Ratio Guide sometimes calls for making "Layered Pours" of Chockfast because the Chockfast may overheat if poured in a single layer. Use Layer Keys to prevent the edges from curling between pours. Pour successive layers within 4 to 6 hours.

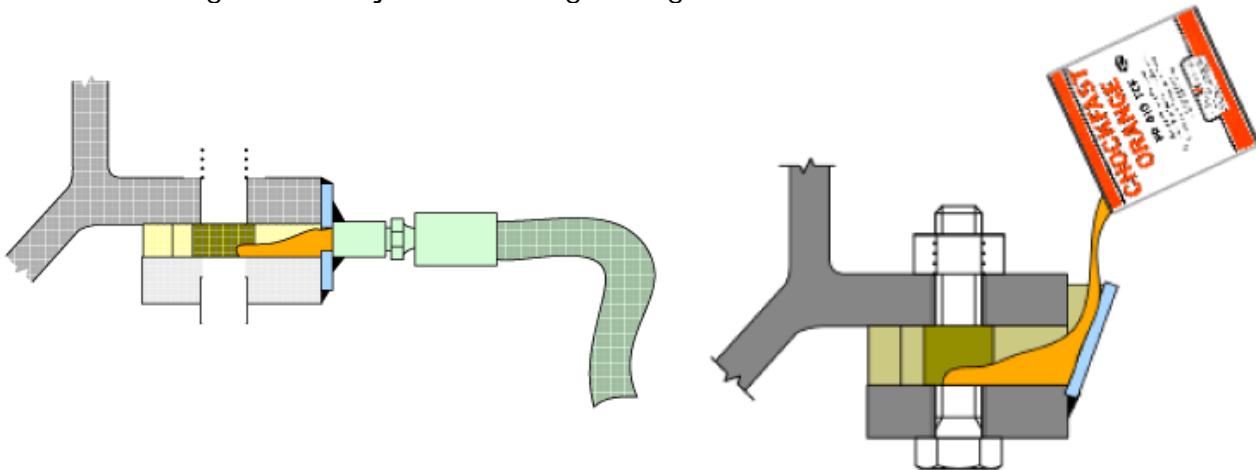


Click image to enlarge.



Chocking with Limited Access

Chockfast Orange can be injected with a grease gun.



The outer metal dam can be installed at an angle.