


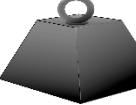
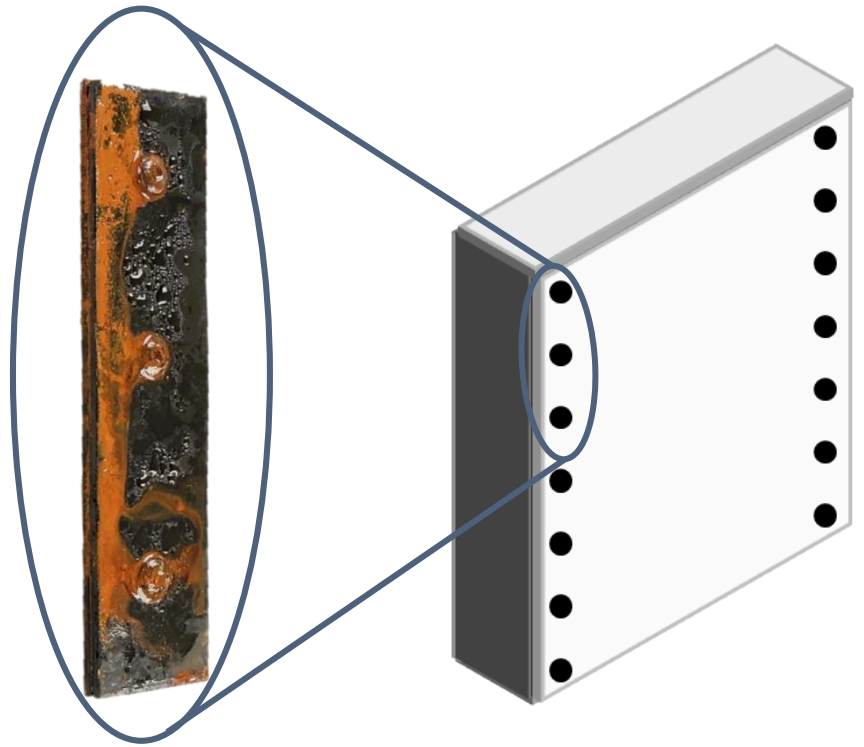


# Insulated Panel Bonding




## The Problems: Rivets

-  Time and labor intensive  
Multi-Step Process
-  Higher chance of leaks  
Adds holes to materials
-  Poor durability  
Point loads can cause stress cracks
-  Heavy  
Moisture intrusion adds significant weight to foam



## The Solution: Plexus® Adhesives

-  Save time and less labor  
Significantly less steps  
Bond and seal in one step
-  Reduce leak potential  
No holes in the roof
-  Improve durability  
Distributes stress
-  Lightweight  
Reduce mass up by up to 33%  
Enables composite sandwich panels instead of roof bows



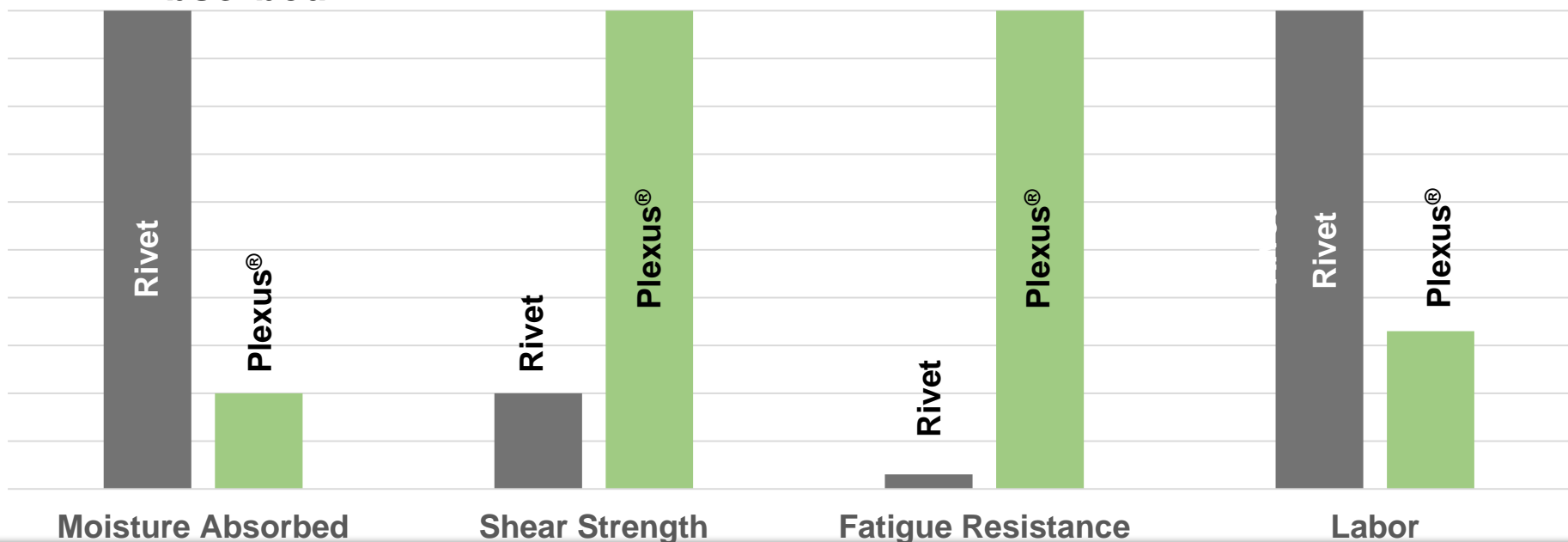
## The Results:

Up to  
**5X Less Moisture Absorbed**

Up to  
**5X Stronger**

Up to  
**97X More Durable**

Up to  
**3X Labor Savings**



ITW PERFORMANCE POLYMERS PROVIDES THE INFORMATION HEREIN ONLY AS A GOOD FAITH GUIDE, AND IT IS NOT INTENDED AS A SUBSTITUTE FOR THE CUSTOMER'S OWN TESTING OR CALCULATIONS. THE CUSTOMER ASSUMES ALL RESPONSIBILITIES FOR DETERMINING THE SUITABILITY OF THE INFORMATION, OPINIONS, AND OUR PRODUCTS AS TO THE APPROPRIATE USE IN THEIR APPLICATION. THE ENCLOSED INFORMATION DOES NOT CREATE ANY WARRANTY, EXPRESS OR IMPLIED, INCLUDING ANY WARRANTY OR FITNESS FOR ANY PARTICULAR PURPOSE OR APPLICATION. UNDER NO CIRCUMSTANCES SHALL ITW PERFORMANCE POLYMERS BE LIABLE FOR ANY DAMAGES, WHETHER DIRECT, INDIRECT, INCIDENTAL OR CONSEQUENTIAL DAMAGES. OUR PRODUCTS ARE INTENDED FOR USE AND SALE TO INDUSTRIAL AND COMMERCIAL CUSTOMERS.